



Officials: Ted Valentine, Lee Cassell, Doug Shows

Florida - 71

Record: 3-1

NO.	Name	F	Min	FG			3P			FT			Rebounds			Fouls		TP	AS	TO	ST	Blocks		+/-
				M-A	M-A	M-A	OR	DR	TOT	PF	FD	BS	BA											
11	Keyontae Johnson	F	03:42	2-3	0-1	1-1	0	0	0	0	1	5	0	0	0	0	0	0	0	0	0	0	8	
12	Colin Castleton	F	21:28	3-4	0-0	1-3	4	3	7	3	2	7	0	1	2	1	0	2	1	0	9			
1	Tre Mann	G	29:28	7-17	2-7	1-1	0	8	8	4	4	17	7	3	1	0	1	5						
10	Noah Locke	G	24:16	2-6	2-5	2-2	0	0	0	2	1	8	1	3	0	0	0	-15						
23	Scottie Lewis	G	38:40	6-13	4-5	3-5	2	2	4	3	4	19	3	5	2	3	0	-13						
22	Tyree Appleby		23:15	2-7	2-4	0-0	0	2	2	3	2	6	1	5	1	0	1	-17						
5	Omar Payne		16:01	1-2	0-0	0-0	1	1	2	3	0	2	0	0	0	3	0	-11						
0	Ques Glover		12:25	2-4	0-0	0-0	0	2	2	1	1	4	1	2	0	0	1	-1						
4	Anthony Duruji		13:26	0-1	0-0	1-2	0	1	1	3	1	1	1	0	0	0	0	-10						
44	Niels Lane		02:29	0-1	0-1	0-0	0	0	0	0	0	0	0	0	0	0	0	-1						
15	Osayi Osifo		14:50	0-1	0-0	2-2	1	2	3	2	2	2	0	1	0	1	1	-14						
Team							2	3	5			0		0										
Totals				25-59	10-23	11-16	10	24	34	24	18	71	14	20	6	8	4	-12						

Shooting By Period		
1 st FG%	12-30	40.0%
3PT%	5-12	41.7%
FT%	6-10	60%
2 nd FG%	13-29	44.8%
3PT%	5-11	45.5%
FT%	5-6	83.3%
GM FG%	25-59	42.4%
3PT%	10-23	43.5%
FT%	11-16	68.8%

Dead Ball Rebounds: 2, 0

Technical Fouls: Coach 2nd 12:07

Florida State - 83

Record: 3-0

NO.	Name	F	Min	FG			3P			FT			Rebounds			Fouls		TP	AS	TO	ST	Blocks		+/-
				M-A	M-A	M-A	OR	DR	TOT	PF	FD	BS	BA											
1	RaiQuan Gray	F	23:38	2-5	0-0	1-2	2	6	8	3	1	5	2	3	1	2	0	-1						
5	Balsa Koprivica	C	16:26	3-7	0-0	0-1	0	3	3	1	2	6	0	3	0	1	3	-9						
2	Anthony Polite	G	27:36	4-7	3-4	3-4	2	3	5	1	3	14	2	1	1	1	13							
4	Scottie Barnes	G	27:48	7-10	1-2	2-6	0	2	2	3	4	17	5	3	1	0	10							
23	M.J. Walker	G	29:37	2-5	1-2	12-12	0	2	2	1	8	17	3	4	3	0	10							
10	Malik Osborne		20:32	1-5	0-1	0-0	1	1	2	4	1	2	0	1	1	0	5							
0	RayQuan Evans		18:21	1-4	0-1	3-3	0	3	3	2	1	5	2	1	0	0	7							
31	Wyatt Wilkes		17:34	2-5	1-4	0-0	0	0	0	0	0	5	2	0	0	0	14							
24	Sardaar Calhoun		07:29	1-3	1-1	0-0	0	0	0	0	0	3	1	0	1	0	-2							
34	Tanor Ngom		06:15	2-2	0-0	2-2	0	1	1	1	3	6	0	0	0	0	7							
15	Quincy Ballard		01:32	0-0	0-0	0-0	0	0	0	0	1	0	0	0	0	0	4							
11	Nathanael Jack		03:12	1-1	1-1	0-0	0	0	0	2	0	3	0	0	0	0	2							
Team							3	4	7			0		0										
Totals				26-54	8-16	23-30	8	25	33	18	24	83	17	16	8	4	8	12						

Shooting By Period		
1 st FG%	14-26	53.8%
3PT%	6-12	50.0%
FT%	11-15	73.3%
2 nd FG%	12-28	42.9%
3PT%	2-4	50.0%
FT%	12-15	80%
GM FG%	26-54	48.1%
3PT%	8-16	50.0%
FT%	23-30	76.7%

Dead Ball Rebounds: 3, 2

Technical Fouls: NONE

	UF	FSU
Biggest lead	9 (1 st 9:07)	18 (2 nd 14:44)
Best Scoring Run	9 (1 st 16:56)	17 (1 st 4:59)
Lead Changes	2	
Times Tied	0	
Time with Lead	11:22	28:14

Points from	UF	FSU
Turnovers	14	17
Paint	26	30
Second Chance	12	8
Fast Breaks	17	12
Bench	15	24

	Period by Period Scoring		
	1st	2nd	TOT
UF	35	36	71
FSU	45	38	83



Period 1

Quarter Starters:

FSU	1 Gray R	2 Polite A	4 Barnes S	5 Koprivica B	23 Walker M
UF	1 Mann T	10 Locke N	11 Johnson K	12 Castleton C	23 Lewis S

Game Time	FSU	Score	Diff	UF
20:00	5 KOPRIVICA B jumpball won			12 CASTLETON C jumpball lost
19:40	23 WALKER M 3pt FG , jump shot missed			
19:36	1 GRAY R offensive rebound (1)			
19:36	1 GRAY R 2pt FG second chance in the paint, layup made (2)	2-0	2	
19:11				23 LEWIS S 2pt FG outside the paint, step back jump shot missed
19:09	5 KOPRIVICA B defensive rebound (1)			
18:54	5 KOPRIVICA B 2pt FG outside the paint, jump shot missed			
18:54				defensive rebound (1)
18:35	jump ball situation			
18:29		2-3	-1	1 MANN T 3pt FG , jump shot made (3)
18:29				23 LEWIS S assist (1)
18:17	1 GRAY R turnover lost ball (1)			1 MANN T steal (1)
18:10		2-6	-4	23 LEWIS S 3pt FG fast break from turnover, jump shot made (3)
18:10				1 MANN T assist (1)
17:59	4 BARNES S turnover lost ball (1)			23 LEWIS S steal (1)
17:49				10 LOCKE N 3pt FG from turnover, jump shot missed
17:46	1 GRAY R defensive rebound (2)			
17:40	1 GRAY R 2pt FG in the paint, driving layup missed			
17:36				1 MANN T defensive rebound (1)
17:36				10 LOCKE N turnover out of bounds (1)
17:18	2 POLITE A 2pt FG from turnover in the paint, driving layup blocked			
17:18				23 LEWIS S block (1)
17:14				1 MANN T defensive rebound (2)
17:12				1 MANN T 2pt FG outside the paint, step back jump shot missed
17:09	defensive rebound (4)			
17:00	23 WALKER M turnover lost ball (1)			12 CASTLETON C steal (1)
16:56		2-8	-6	11 JOHNSON K 2pt FG fast break from turnover in the paint, driving layup made (2)
16:56				1 MANN T assist (2)
16:56	23 WALKER M foul shooting (1 - 1)			11 JOHNSON K foul drawn (1)
16:56		2-9	-7	11 JOHNSON K free throw fast break 1 - 1 made (3)
16:53	4 BARNES S foul drawn (1)			12 CASTLETON C foul shooting (1 - 1)
16:53	4 BARNES S free throw fast break 1 - 2 missed			
16:53	offensive dead ball rebound (1)			
16:53	5 KOPRIVICA B substitution out			
16:53	10 OSBORNE M substitution in			
16:53	4 BARNES S free throw fast break 2 - 2 made (1)	3-9	-6	
16:53				10 LOCKE N substitution out
16:53				22 APPLEBY T substitution in
16:37				11 JOHNSON K 3pt FG , jump shot missed
16:34	1 GRAY R defensive rebound (3)			
16:27	23 WALKER M turnover lost ball (2)			12 CASTLETON C steal (2)



Florida at Florida State

12/12/20 Donald L. Tucker Center, Tallahassee
2020-21 Men's Basketball

Game Time: 11:00 AM
Game Duration: 2:25
Attendance: 2,761

Officials: Ted Valentine, Lee Cassell, Doug Shows

Game Time	FSU	Score	Diff	UF
16:23		3-11	-8	11 JOHNSON K 2pt FG fast break from turnover in the paint, alleyoop made (5)
16:23				22 APPLEBY T assist (1)
16:18	Timeout 30 Sec			
16:18	Timeout media			
16:18				12 CASTLETON C substitution out
16:18				5 PAYNE O substitution in
16:18				11 JOHNSON K substitution out
16:18				10 LOCKE N substitution in
16:01	2 POLITE A 3pt FG , jump shot made (3)	6-11	-5	
16:01	4 BARNES S assist (1)			
15:26				22 APPLEBY T 3pt FG , jump shot missed
15:26	defensive dead ball rebound (2)			
14:59	4 BARNES S 3pt FG , jump shot made (4)	9-11	-2	
14:59	2 POLITE A assist (1)			
14:44	23 WALKER M steal (1)			1 MANN T turnover lost ball (1)
14:40	23 WALKER M 2pt FG from turnover in the paint, driving layup missed			
14:36	2 POLITE A offensive rebound (1)			
14:20	4 BARNES S 3pt FG from turnover second chance, jump shot missed			
14:18				1 MANN T defensive rebound (3)
14:04				23 LEWIS S turnover lost ball (1)
14:00	2 POLITE A foul drawn (1)			23 LEWIS S foul shooting (1 - 2)
14:00	2 POLITE A free throw fast break 1 - 2 missed			
14:00	offensive dead ball rebound (3)			
14:00	4 BARNES S substitution out			
14:00	0 EVANS R substitution in			
14:00				1 MANN T substitution out
14:00				23 LEWIS S substitution out
14:00				0 GLOVER Q substitution in
14:00				4 DURUJI A substitution in
14:00	2 POLITE A free throw fast break 2 - 2 made (4)	10-11	-1	
14:00	2 POLITE A substitution out			
14:00	31 WILKES W substitution in			
14:00				22 APPLEBY T substitution out
14:00				44 LANE N substitution in
13:58		10-13	-3	0 GLOVER Q 2pt FG outside the paint, jump shot made (2)
13:58				4 DURUJI A assist (1)
13:29	10 OSBORNE M 2pt FG outside the paint, step back jump shot blocked			
13:29				5 PAYNE O block (1)
13:29				0 GLOVER Q defensive rebound (1)
13:23				5 PAYNE O 2pt FG in the paint, layup missed
13:18	0 EVANS R defensive rebound (1)			
13:13	31 WILKES W 3pt FG , jump shot missed			
13:09				defensive rebound (6)
12:58				44 LANE N 3pt FG , jump shot missed
12:53				5 PAYNE O offensive rebound (1)
12:53		10-15	-5	5 PAYNE O 2pt FG second chance in the paint, hook shot made (2)



Florida at Florida State

12/12/20 Donald L. Tucker Center, Tallahassee
2020-21 Men's Basketball

Game Time: 11:00 AM
Game Duration: 2:25
Attendance: 2,761

Officials: Ted Valentine, Lee Cassell, Doug Shows

Game Time	FSU	Score	Diff	UF
12:46	0 EVANS R 2pt FG in the paint, driving layup made (2)	12-15	-3	
12:40	1 GRAY R substitution out			
12:40	23 WALKER M substitution out			
12:40	5 KOPRIVICA B substitution in			
12:40	24 CALHOUN S substitution in			
12:40				10 LOCKE N substitution out
12:40				44 LANE N substitution out
12:40				22 APPLEBY T substitution in
12:40				23 LEWIS S substitution in
12:27	10 OSBORNE M foul personal (1 - 2)			0 GLOVER Q foul drawn (1)
12:21				22 APPLEBY T turnover bad pass (1)
12:08	5 KOPRIVICA B foul drawn (1)			5 PAYNE O foul personal (1 - 3)
12:08				0 GLOVER Q substitution out
12:08				5 PAYNE O substitution out
12:08				1 MANN T substitution in
12:08				12 CASTLETON C substitution in
11:48	31 WILKES W 3pt FG from turnover, jump shot missed			
11:45				22 APPLEBY T defensive rebound (1)
11:40		12-18	-6	23 LEWIS S 3pt FG , jump shot made (6)
11:40				1 MANN T assist (3)
11:14	0 EVANS R 2pt FG outside the paint, pull up jump shot missed			
11:11				12 CASTLETON C defensive rebound (1)
11:08				23 LEWIS S turnover lost ball (2)
11:08	Timeout media			
10:38	5 KOPRIVICA B turnover (1)			
10:38	0 EVANS R substitution out			
10:38	5 KOPRIVICA B substitution out			
10:38	10 OSBORNE M substitution out			
10:38	24 CALHOUN S substitution out			
10:38	31 WILKES W substitution out			
10:38	1 GRAY R substitution in			
10:38	2 POLITE A substitution in			
10:38	4 BARNES S substitution in			
10:38	23 WALKER M substitution in			
10:38	34 NGOM T substitution in			
10:22	1 GRAY R foul shooting (1 - 3)			4 DURUJI A foul drawn (1)
10:22		12-19	-7	4 DURUJI A free throw 1 - 2 made (1)
10:22				4 DURUJI A free throw 2 - 2 missed
10:21				23 LEWIS S offensive rebound (1)
10:20	1 GRAY R foul shooting (2 - 4)			23 LEWIS S foul drawn (1)
10:20				23 LEWIS S free throw 1 - 2 missed
10:20				offensive dead ball rebound (1)
10:20	1 GRAY R substitution out			
10:20	31 WILKES W substitution in			
10:20		12-20	-8	23 LEWIS S free throw 2 - 2 made (7)
10:09	4 BARNES S turnover bad pass (2)			
09:54				1 MANN T 3pt FG from turnover, step back jump shot missed
09:50				12 CASTLETON C offensive rebound (2)



Florida at Florida State

12/12/20 Donald L. Tucker Center, Tallahassee
2020-21 Men's Basketball

Game Time: 11:00 AM
Game Duration: 2:25
Attendance: 2,761

Officials: Ted Valentine, Lee Cassell, Doug Shows

Game Time	FSU	Score	Diff	UF
09:51				12 CASTLETON C 2pt FG from turnover second chance in the paint, layup missed
09:50	defensive rebound (8)			
09:31	34 NGOM T 2pt FG in the paint, layup made (2)	14-20	-6	
09:31	31 WILKES W assist (1)			
09:22				23 LEWIS S turnover bad pass (3)
09:19	4 BARNES S foul drawn (2)			1 MANN T foul shooting (1 - 4)
09:19	4 BARNES S free throw fast break 1 - 2 missed			
09:19	offensive dead ball rebound (4)			
09:19				12 CASTLETON C substitution out
09:19				5 PAYNE O substitution in
09:19	4 BARNES S free throw fast break 2 - 2 missed			
09:17				1 MANN T defensive rebound (4)
09:07		14-23	-9	22 APPLEBY T 3pt FG , jump shot made (3)
08:52	23 WALKER M foul drawn (1)			1 MANN T foul personal (2 - 5)
08:52				1 MANN T substitution out
08:52				10 LOCKE N substitution in
08:49	23 WALKER M 3pt FG , jump shot made (3)	17-23	-6	
08:49	4 BARNES S assist (2)			
08:32				22 APPLEBY T 2pt FG in the paint, driving layup missed
08:28	34 NGOM T defensive rebound (1)			
08:17	34 NGOM T foul drawn (1)			5 PAYNE O foul personal (2 - 6)
08:17				5 PAYNE O substitution out
08:17				15 OSIFO O substitution in
08:14	2 POLITE A 3pt FG , jump shot made (7)	20-23	-3	
08:14	4 BARNES S assist (3)			
07:55	Timeout media			
07:55	34 NGOM T substitution out			
07:55	15 BALLARD Q substitution in			
07:52				22 APPLEBY T turnover bad pass (2)
07:47	23 WALKER M foul drawn (2)			10 LOCKE N foul personal (1 - 7)
07:47	23 WALKER M 1&1 free throw 1 made (4)	21-23	-2	
07:47	23 WALKER M 1&1 free throw 2 made (5)	22-23	-1	
07:32				10 LOCKE N 2pt FG in the paint, floating jump shot missed
07:29	23 WALKER M defensive rebound (1)			
07:07	31 WILKES W 2pt FG outside the paint, pull up jump shot made (2)	24-23	1	
07:07	23 WALKER M assist (1)			
06:44	15 BALLARD Q foul drawn (1)			15 OSIFO O foul offensive (1 - 8)
06:44				15 OSIFO O turnover offensive (1)
06:44				15 OSIFO O substitution out
06:44				12 CASTLETON C substitution in
06:23	23 WALKER M turnover bad pass (3)			
06:23	15 BALLARD Q substitution out			
06:23	10 OSBORNE M substitution in			
06:12				10 LOCKE N 3pt FG from turnover, jump shot missed
06:09	2 POLITE A defensive rebound (2)			
05:54	4 BARNES S 2pt FG in the paint, floating jump shot made (6)	26-23	3	
05:43	10 OSBORNE M steal (1)			23 LEWIS S turnover bad pass (4)
05:36	23 WALKER M foul drawn (3)			22 APPLEBY T foul personal (1 - 9)



Florida at Florida State

12/12/20 Donald L. Tucker Center, Tallahassee
2020-21 Men's Basketball

Game Time: 11:00 AM

Game Duration: 2:25

Attendance: 2,761

Officials: Ted Valentine, Lee Cassell, Doug Shows

Game Time	FSU	Score	Diff	UF
05:36				4 DURUJI A substitution out
05:36				15 OSIFO O substitution in
05:36	23 WALKER M 1&1 free throw 1 made (6)	27-23	4	
05:36	23 WALKER M 1&1 free throw 2 made (7)	28-23	5	
05:36	23 WALKER M substitution out			
05:36	11 JACK N substitution in			
05:16	4 BARNES S foul personal (1 - 5)			23 LEWIS S foul drawn (2)
05:16	4 BARNES S substitution out			
05:16	0 EVANS R substitution in			
05:12				15 OSIFO O 2pt FG in the paint, layup blocked
05:12	2 POLITE A block (1)			
05:08	2 POLITE A defensive rebound (3)			
04:59	2 POLITE A 3pt FG , jump shot made (10)	31-23	8	
04:59	31 WILKES W assist (2)			
04:38		31-25	6	23 LEWIS S 2pt FG in the paint, floating jump shot made (9)
04:38	11 JACK N foul shooting (1 - 6)			23 LEWIS S foul drawn (3)
04:38				10 LOCKE N substitution out
04:38				0 GLOVER Q substitution in
04:38		31-26	5	23 LEWIS S free throw 1 - 1 made (10)
04:38				Timeout 30 Sec
04:18	11 JACK N 3pt FG , jump shot made (3)	34-26	8	
04:18	0 EVANS R assist (1)			
03:57				23 LEWIS S 2pt FG outside the paint, pull up jump shot missed
03:52				15 OSIFO O offensive rebound (1)
03:39		34-28	6	0 GLOVER Q 2pt FG second chance in the paint, driving layup made (4)
03:05	2 POLITE A 3pt FG , jump shot missed			
03:03	2 POLITE A offensive rebound (4)			
03:04	2 POLITE A foul drawn (2)			22 APPLEBY T foul shooting (2 - 10)
03:04				Timeout media
03:04				22 APPLEBY T substitution out
03:04				44 LANE N substitution in
03:04	2 POLITE A free throw 1 - 2 made (11)	35-28	7	
03:04	2 POLITE A free throw 2 - 2 made (12)	36-28	8	
02:55				0 GLOVER Q 2pt FG outside the paint, jump shot missed
02:54				12 CASTLETON C offensive rebound (3)
02:54	10 OSBORNE M foul personal (2 - 7)			12 CASTLETON C foul drawn (1)
02:54	10 OSBORNE M substitution out			
02:54	5 KOPRIVICA B substitution in			
02:54	2 POLITE A substitution out			
02:54	23 WALKER M substitution in			
02:54		36-29	7	12 CASTLETON C 1&1 free throw 1 made (1)
02:54				12 CASTLETON C 1&1 free throw 2 missed
02:52	23 WALKER M defensive rebound (2)			
02:41	5 KOPRIVICA B foul offensive (1 - 8)			15 OSIFO O foul drawn (1)
02:41	5 KOPRIVICA B turnover offensive (2)			
02:27				23 LEWIS S 2pt FG from turnover in the paint, pull up jump shot missed
02:24				23 LEWIS S offensive rebound (2)
02:24	11 JACK N foul shooting (2 - 9)			23 LEWIS S foul drawn (4)



Official Basketball Play by Play - First Half

Florida at Florida State

12/12/20 Donald L. Tucker Center, Tallahassee
2020-21 Men's Basketball

Game Time: 11:00 AM

Game Duration: 2:25

Attendance: 2,761

Officials: Ted Valentine, Lee Cassell, Doug Shows

Game Time	FSU	Score	Diff	UF
02:24				23 LEWIS S free throw 1 - 2 missed
02:24				offensive dead ball rebound (2)
02:24	11 JACK N substitution out			
02:24	4 BARNES S substitution in			
02:24		36-30	6	23 LEWIS S free throw 2 - 2 made (11)
02:24				44 LANE N substitution out
02:24				10 LOCKE N substitution in
02:04	31 WILKES W 3pt FG , jump shot missed			
02:03				defensive rebound (16)
01:56		36-33	3	10 LOCKE N 3pt FG fast break, jump shot made (3)
01:56				23 LEWIS S assist (2)
01:39	4 BARNES S 2pt FG in the paint, driving layup made (8)	38-33	5	
01:30				15 OSIFO O substitution out
01:30				4 DURUJI A substitution in
01:16				0 GLOVER Q turnover travel (1)
01:05	4 BARNES S 2pt FG from turnover in the paint, dunk, made (10)	40-33	7	
00:49		40-35	5	23 LEWIS S 2pt FG outside the paint, pull up jump shot made (13)
00:40	4 BARNES S 2pt FG in the paint, driving layup made (12)	42-35	7	
00:40	4 BARNES S foul drawn (3)			4 DURUJI A foul shooting (1 - 11)
00:40	5 KOPRIVICA B substitution out			
00:40	34 NGOM T substitution in			
00:40				4 DURUJI A substitution out
00:40				15 OSIFO O substitution in
00:40	4 BARNES S free throw 1 - 1 made (13)	43-35	8	
00:12				23 LEWIS S 3pt FG , jump shot missed
00:11	defensive dead ball rebound (5)			
00:11	34 NGOM T foul drawn (2)			12 CASTLETON C foul personal (2 - 12)
00:11	34 NGOM T free throw 1 - 2 made (3)	44-35	9	
00:11	23 WALKER M substitution out			
00:11	2 POLITE A substitution in			
00:11				12 CASTLETON C substitution out
00:11				1 MANN T substitution in
00:11	34 NGOM T free throw 2 - 2 made (4)	45-35	10	
00:00				1 MANN T 2pt FG outside the paint, jump shot missed
00:00	0 EVANS R defensive rebound (2)			
END OF PERIOD				
FSU 45-35 UF				



Officials: Ted Valentine, Lee Cassell, Doug Shows

Florida - 35

NO.	Name	Min	FG			Rebounds			Fouls		TP	AS	TO	ST	Blocks		+/-
			M-A	M-A	M-A	OR	DR	TOT	PF	FD					BS	BA	
11	Keyontae Johnson	F 03:42	2-3	0-1	1-1	0	0	0	0	1	5	0	0	0	0	0	8
12	Colin Castleton	F 13:03	0-1	0-0	1-2	2	1	3	2	1	1	0	0	2	0	0	3
1	Tre Mann	G 09:28	1-4	1-2	0-0	0	4	4	2	0	3	3	1	1	0	0	7
10	Noah Locke	G 13:23	1-4	1-3	0-0	0	0	0	1	0	3	0	1	0	0	0	-18
23	Scottie Lewis	G 18:40	4-8	2-3	3-5	2	0	2	1	4	13	2	4	1	1	0	-11
22	Tyree Appleby	12:29	1-3	1-2	0-0	0	1	1	2	0	3	1	2	0	0	0	-14
5	Omar Payne	05:12	1-2	0-0	0-0	1	0	1	2	0	2	0	0	0	1	0	-5
0	Ques Glover	06:30	2-3	0-0	0-0	0	1	1	0	1	4	0	1	0	0	0	-3
4	Anthony Duruji	09:14	0-0	0-0	1-2	0	0	0	1	1	1	1	0	0	0	0	-7
44	Niels Lane	02:00	0-1	0-1	0-0	0	0	0	0	0	0	0	0	0	0	0	2
15	Osayi Osifo	06:19	0-1	0-0	0-0	1	0	1	1	1	0	0	1	0	0	1	-12
Team						0	3	3			0		0				
Totals			12-30	5-12	6-10	6	10	16	12	9	35	7	10	4	2	1	-10

Shooting By Period		
1st FG%	12-30	40.0%
3PT%	5-12	41.7%
FT%	6-10	60%
GM FG%	12-30	40.0%
3PT%	5-12	41.7%
FT%	6-10	60.0%

Dead Ball Rebounds: 2, 0

Technical Fouls::NONE

Florida State - 45

NO.	Name	Min	FG			Rebounds			Fouls		TP	AS	TO	ST	Blocks		+/-
			M-A	M-A	M-A	OR	DR	TOT	PF	FD					BS	BA	
1	RaiQuan Gray	F 07:38	1-2	0-0	0-0	1	2	3	2	0	2	0	1	0	0	0	-4
5	Balsa Koprivica	C 07:23	0-1	0-0	0-0	0	1	1	1	1	0	0	2	0	0	0	-11
2	Anthony Polite	G 13:56	3-5	3-4	3-4	2	2	4	0	2	12	1	0	0	1	1	14
4	Scottie Barnes	G 13:46	5-6	1-2	2-5	0	0	0	1	3	13	3	2	0	0	0	12
23	M.J. Walker	G 15:04	1-3	1-2	4-4	0	2	2	1	3	7	1	3	1	0	0	9
10	Malik Osborne	09:44	0-1	0-0	0-0	0	0	0	2	0	0	0	0	1	0	1	8
0	RayQuan Evans	08:38	1-2	0-0	0-0	0	2	2	0	0	2	1	0	0	0	0	1
31	Wyatt Wilkes	13:42	1-4	0-3	0-0	0	0	0	0	0	2	2	0	0	0	0	12
24	Sardar Calhoun	02:02	0-0	0-0	0-0	0	0	0	0	0	0	0	0	0	0	0	-3
34	Tanor Ngom	03:23	1-1	0-0	2-2	0	1	1	0	2	4	0	0	0	0	0	6
15	Quincy Ballard	01:32	0-0	0-0	0-0	0	0	0	0	1	0	0	0	0	0	0	4
11	Nathanael Jack	03:12	1-1	1-1	0-0	0	0	0	2	0	3	0	0	0	0	0	2
Team						0	2	2			0		0				
Totals			14-26	6-12	11-15	3	12	15	9	12	45	8	8	2	1	2	10

Shooting By Period		
1st FG%	14-26	53.8%
3PT%	6-12	50.0%
FT%	11-15	73.3%
GM FG%	14-26	53.8%
3PT%	6-12	50.0%
FT%	11-15	73.3%

Dead Ball Rebounds: 3, 2

Technical Fouls::NONE

	UF	FSU
Biggest lead	9 (1st 9:07)	10 (1st 0:11)
Best Scoring Run	9 (1st 16:56)	17 (1st 4:59)
Lead Changes	2	
Times Tied	0	
Time with Lead	11:22	08:14

Points from	UF	FSU
Turnovers	10	7
Paint	10	14
Second Chance	7	4
Fast Breaks	11	4
Bench	10	11

	Period by Period Scoring		
	1st	2nd	TOT
UF	35	36	71
FSU	45	38	83



Florida at Florida State

12/12/20 Donald L. Tucker Center, Tallahassee
2020-21 Men's Basketball

Game Time: 11:00 AM

Game Duration: 2:25

Attendance: 2,761

Officials: Ted Valentine, Lee Cassell, Doug Shows

Period 2

Quarter Starters:

FSU	1 Gray R	2 Polite A	4 Barnes S	5 Koprivica B	23 Walker M
UF	1 Mann T	4 Duruji A	10 Locke N	12 Castleton C	23 Lewis S

Game Time	FSU	Score	Diff	UF
20:00	0 EVANS R substitution out			
20:00	31 WILKES W substitution out			
20:00	34 NGOM T substitution out			
20:00	1 GRAY R substitution in			
20:00	5 KOPRIVICA B substitution in			
20:00	23 WALKER M substitution in			
20:00				0 GLOVER Q substitution out
20:00				15 OSIFO O substitution out
20:00				4 DURUJI A substitution in
20:00				12 CASTLETON C substitution in
19:37	5 KOPRIVICA B 2pt FG in the paint, layup blocked			
19:37				23 LEWIS S block (2)
19:32	offensive rebound (16)			
19:31	1 GRAY R foul drawn (1)			12 CASTLETON C foul shooting (3 - 1)
19:31	1 GRAY R free throw 1 - 2 made (3)	46-35	11	
19:31				12 CASTLETON C substitution out
19:31				5 PAYNE O substitution in
19:31				4 DURUJI A substitution out
19:31				15 OSIFO O substitution in
19:30	1 GRAY R free throw 2 - 2 missed			
19:28				15 OSIFO O defensive rebound (2)
19:17				23 LEWIS S 2pt FG outside the paint, pull up jump shot missed
19:13	4 BARNES S defensive rebound (1)			
19:06	23 WALKER M foul drawn (4)			5 PAYNE O foul personal (3 - 2)
18:59	2 POLITE A 2pt FG outside the paint, step back jump shot made (14)	48-35	13	
18:38		48-38	10	23 LEWIS S 3pt FG , jump shot made (16)
18:38				1 MANN T assist (4)
18:28	5 KOPRIVICA B 2pt FG in the paint, dunk, made (2)	50-38	12	
18:28	1 GRAY R assist (1)			
18:17				Timeout 30 Sec
18:03		50-41	9	1 MANN T 3pt FG , step back jump shot made (6)
17:53	4 BARNES S 2pt FG in the paint, driving layup blocked			
17:53				23 LEWIS S block (3)
17:49				15 OSIFO O defensive rebound (3)
17:49	4 BARNES S foul personal (2 - 1)			1 MANN T foul drawn (1)
17:37				1 MANN T 3pt FG , jump shot missed
17:34	1 GRAY R defensive rebound (4)			
17:19	5 KOPRIVICA B 2pt FG in the paint, dunk, made (4)	52-41	11	
17:19	23 WALKER M assist (2)			
17:01	2 POLITE A steal (1)			23 LEWIS S turnover lost ball (5)
16:43	5 KOPRIVICA B 2pt FG from turnover in the paint, dunk, made (6)	54-41	13	
16:43	23 WALKER M assist (3)			



Florida at Florida State

12/12/20 Donald L. Tucker Center, Tallahassee
2020-21 Men's Basketball

Game Time: 11:00 AM
Game Duration: 2:25
Attendance: 2,761

Officials: Ted Valentine, Lee Cassell, Doug Shows

Game Time	FSU	Score	Diff	UF
16:21	23 WALKER M steal (2)			10 LOCKE N turnover lost ball (2)
16:07	2 POLITE A 2pt FG from turnover in the paint, driving layup missed			
16:05				1 MANN T defensive rebound (5)
15:55	jump ball situation			
15:55	Timeout media			
15:55	1 GRAY R substitution out			
15:55	2 POLITE A substitution out			
15:55	23 WALKER M substitution out			
15:55	0 EVANS R substitution in			
15:55	10 OSBORNE M substitution in			
15:55	24 CALHOUN S substitution in			
15:55				10 LOCKE N substitution out
15:55				22 APPLEBY T substitution in
15:48	4 BARNES S steal (1)			22 APPLEBY T turnover bad pass (3)
15:41	24 CALHOUN S 2pt FG from turnover in the paint, jump shot missed			
15:38				22 APPLEBY T defensive rebound (2)
15:29				22 APPLEBY T 2pt FG in the paint, driving layup missed
15:26	4 BARNES S defensive rebound (2)			
15:15	5 KOPRIVICA B 2pt FG in the paint, dunk, blocked			
15:15				15 OSIFO O block (1)
15:15	offensive rebound (20)			
15:15				22 APPLEBY T substitution out
15:15				0 GLOVER Q substitution in
15:00	24 CALHOUN S 3pt FG second chance, jump shot made (3)	57-41	16	
15:00	4 BARNES S assist (4)			
14:49	24 CALHOUN S steal (1)			1 MANN T turnover bad pass (2)
14:44	4 BARNES S 2pt FG fast break from turnover in the paint, dunk, made (15)	59-41	18	
14:44	0 EVANS R assist (2)			
14:12				1 MANN T 2pt FG outside the paint, jump shot missed
14:09	0 EVANS R defensive rebound (3)			
14:06	24 CALHOUN S 2pt FG in the paint, driving layup blocked			
14:06				5 PAYNE O block (2)
14:02				1 MANN T defensive rebound (6)
13:56		59-43	16	1 MANN T 2pt FG in the paint, driving layup made (8)
13:30	4 BARNES S turnover bad pass (3)			23 LEWIS S steal (2)
13:25	0 EVANS R foul shooting (1 - 2)			15 OSIFO O foul drawn (2)
13:25		59-44	15	15 OSIFO O free throw fast break 1 - 2 made (1)
13:25	4 BARNES S substitution out			
13:25	5 KOPRIVICA B substitution out			
13:25	1 GRAY R substitution in			
13:25	2 POLITE A substitution in			
13:25				5 PAYNE O substitution out
13:25				12 CASTLETON C substitution in
13:25		59-45	14	15 OSIFO O free throw fast break 2 - 2 made (2)
13:25				15 OSIFO O substitution out
13:25				4 DURUJI A substitution in
13:15	10 OSBORNE M 2pt FG in the paint, hook shot missed			



Florida at Florida State

12/12/20 Donald L. Tucker Center, Tallahassee
2020-21 Men's Basketball

Game Time: 11:00 AM

Game Duration: 2:25

Attendance: 2,761

Officials: Ted Valentine, Lee Cassell, Doug Shows

Game Time	FSU	Score	Diff	UF
13:13				4 DURUJI A defensive rebound (1)
12:54				0 GLOVER Q 2pt FG in the paint, driving layup blocked
12:54	1 GRAY R block (1)			
12:43	defensive rebound (22)			
12:53				0 GLOVER Q substitution out
12:53				22 APPLEBY T substitution in
12:38	1 GRAY R 2pt FG in the paint, floating jump shot made (5)	61-45	16	
12:38	24 CALHOUN S assist (1)			
12:34	0 EVANS R foul personal (2 - 3)			22 APPLEBY T foul drawn (1)
12:17				4 DURUJI A 2pt FG outside the paint, jump shot missed
12:16				offensive rebound (23)
12:07				foul coach class B technical (2)
12:07	0 EVANS R free throw 1 - 1 made (3)	62-45	17	
12:00	2 POLITE A foul personal (1 - 4)			1 MANN T foul drawn (2)
12:00	Timeout media			
11:45		62-47	15	1 MANN T 2pt FG in the paint, floating jump shot made (10)
11:27	10 OSBORNE M foul drawn (1)			4 DURUJI A foul personal (2 - 3)
11:02	0 EVANS R 3pt FG , jump shot missed			
11:02	10 OSBORNE M offensive rebound (1)			
11:00	10 OSBORNE M 2pt FG second chance in the paint, layup missed			
11:00				1 MANN T defensive rebound (7)
10:41		62-49	13	12 CASTLETON C 2pt FG in the paint, hook shot made (3)
10:28	0 EVANS R foul drawn (1)			4 DURUJI A foul shooting (3 - 4)
10:28	0 EVANS R free throw 1 - 2 made (4)	63-49	14	
10:28	10 OSBORNE M substitution out			
10:28	24 CALHOUN S substitution out			
10:28	23 WALKER M substitution in			
10:28	31 WILKES W substitution in			
10:28				4 DURUJI A substitution out
10:28				15 OSIFO O substitution in
10:28	0 EVANS R free throw 2 - 2 made (5)	64-49	15	
10:28	0 EVANS R substitution out			
10:28	4 BARNES S substitution in			
10:26	34 NGOM T substitution in			
10:25				22 APPLEBY T 2pt FG in the paint, layup blocked
10:25	1 GRAY R block (2)			
10:24				offensive rebound (25)
10:12		64-52	12	23 LEWIS S 3pt FG second chance, jump shot made (19)
10:12				1 MANN T assist (5)
10:26	2 POLITE A substitution out			
10:00	1 GRAY R turnover bad pass (2)			
09:45				1 MANN T 3pt FG from turnover, jump shot missed
09:41				12 CASTLETON C offensive rebound (4)
09:37	4 BARNES S foul personal (3 - 5)			22 APPLEBY T foul drawn (2)
09:37	4 BARNES S substitution out			
09:37	0 EVANS R substitution in			
09:33				12 CASTLETON C turnover travel (1)
09:10	23 WALKER M foul drawn (5)			1 MANN T foul shooting (3 - 5)



Florida at Florida State

12/12/20 Donald L. Tucker Center, Tallahassee
2020-21 Men's Basketball

Game Time: 11:00 AM
Game Duration: 2:25
Attendance: 2,761

Officials: Ted Valentine, Lee Cassell, Doug Shows

Game Time	FSU	Score	Diff	UF
09:10	23 WALKER M free throw 1 - 2 made (8)	65-52	13	
09:10	23 WALKER M free throw 2 - 2 made (9)	66-52	14	
09:01				1 MANN T 3pt FG , jump shot missed
08:58	1 GRAY R defensive rebound (5)			
08:48	34 NGOM T 2pt FG in the paint, layup made (6)	68-52	16	
08:38		68-54	14	1 MANN T 2pt FG in the paint, layup made (12)
08:38	34 NGOM T foul shooting (1 - 6)			1 MANN T foul drawn (3)
08:38		68-55	13	1 MANN T free throw 1 - 1 made (13)
08:38				12 CASTLETON C substitution out
08:38				5 PAYNE O substitution in
08:25	34 NGOM T foul drawn (3)			15 OSIFO O foul personal (2 - 6)
08:20	1 GRAY R turnover 3 seconds (3)			
08:03				23 LEWIS S 2pt FG from turnover in the paint, driving layup missed
08:03	defensive rebound (25)			
08:03				15 OSIFO O substitution out
08:03				44 LANE N substitution in
07:52	31 WILKES W 3pt FG , jump shot made (5)	71-55	16	
07:52	1 GRAY R assist (2)			
07:34				Timeout 30 Sec
07:34	Timeout media			
07:34	34 NGOM T substitution out			
07:34	5 KOPRIVICA B substitution in			
07:34				44 LANE N substitution out
07:34				10 LOCKE N substitution in
07:14				22 APPLEBY T turnover bad pass (4)
07:00	5 KOPRIVICA B 2pt FG from turnover in the paint, jump shot blocked			
07:00				5 PAYNE O block (3)
07:00	offensive rebound (26)			
06:46	23 WALKER M turnover bad pass (4)			22 APPLEBY T steal (1)
06:38				23 LEWIS S 2pt FG from turnover outside the paint, jump shot missed
06:36	5 KOPRIVICA B defensive rebound (2)			
06:36	5 KOPRIVICA B foul drawn (2)			23 LEWIS S foul personal (2 - 7)
06:36	0 EVANS R substitution out			
06:36	1 GRAY R substitution out			
06:36	31 WILKES W substitution out			
06:36	2 POLITE A substitution in			
06:36	4 BARNES S substitution in			
06:36	10 OSBORNE M substitution in			
06:36	5 KOPRIVICA B 1&1 free throw 1 missed			
06:35				5 PAYNE O defensive rebound (2)
06:17		71-58	13	22 APPLEBY T 3pt FG , jump shot made (6)
06:17				1 MANN T assist (6)
06:10	10 OSBORNE M foul offensive (3 - 7)			1 MANN T foul drawn (4)
06:10	10 OSBORNE M turnover offensive (1)			
06:06				10 LOCKE N 3pt FG from turnover, jump shot missed
06:04	5 KOPRIVICA B defensive rebound (3)			
05:42	5 KOPRIVICA B turnover lost ball (3)			



Florida at Florida State

12/12/20 Donald L. Tucker Center, Tallahassee
2020-21 Men's Basketball

Game Time: 11:00 AM
Game Duration: 2:25
Attendance: 2,761

Officials: Ted Valentine, Lee Cassell, Doug Shows

Game Time	FSU	Score	Diff	UF
05:38		71-60	11	1 MANN T 2pt FG fast break from turnover in the paint, driving layup made (15)
05:38				10 LOCKE N assist (1)
05:28	23 WALKER M 2pt FG fast break in the paint, dunk, made (11)	73-60	13	
05:28	4 BARNES S assist (5)			
05:13				1 MANN T 2pt FG in the paint, layup blocked
05:13	5 KOPRIVICA B block (1)			
05:10	10 OSBORNE M defensive rebound (2)			
05:06	23 WALKER M foul drawn (6)			23 LEWIS S foul personal (3 - 8)
05:06	5 KOPRIVICA B substitution out			
05:06	1 GRAY R substitution in			
05:06	23 WALKER M 1&1 free throw 1 made (12)	74-60	14	
05:06	23 WALKER M 1&1 free throw 2 made (13)	75-60	15	
04:52				22 APPLEBY T 3pt FG , step back jump shot missed
04:48	2 POLITE A defensive rebound (5)			
04:36	4 BARNES S 2pt FG in the paint, driving layup missed			
04:29				23 LEWIS S defensive rebound (3)
04:27		75-62	13	1 MANN T 2pt FG in the paint, layup made (17)
04:27				23 LEWIS S assist (3)
04:13	10 OSBORNE M 2pt FG in the paint, dunk, made (2)	77-62	15	
04:13	2 POLITE A assist (2)			
03:55	23 WALKER M steal (3)			10 LOCKE N turnover lost ball (3)
03:55	23 WALKER M foul drawn (7)			10 LOCKE N foul personal (2 - 9)
03:55	Timeout media			
03:55				5 PAYNE O substitution out
03:55				22 APPLEBY T substitution out
03:55				0 GLOVER Q substitution in
03:55				12 CASTLETON C substitution in
03:55	23 WALKER M 1&1 free throw 1 made (14)	78-62	16	
03:55	23 WALKER M 1&1 free throw 2 made (15)	79-62	17	
03:47				1 MANN T 3pt FG , step back jump shot missed
03:43				12 CASTLETON C offensive rebound (5)
03:42		79-64	15	12 CASTLETON C 2pt FG second chance in the paint, jump shot made (5)
03:15	1 GRAY R 2pt FG in the paint, jump shot missed			
03:12				1 MANN T defensive rebound (8)
03:07		79-67	12	10 LOCKE N 3pt FG , jump shot made (6)
03:07				0 GLOVER Q assist (1)
02:35	10 OSBORNE M 3pt FG , jump shot missed			
02:31	1 GRAY R offensive rebound (6)			
02:31	1 GRAY R 2pt FG second chance in the paint, layup missed			
02:31				12 CASTLETON C defensive rebound (6)
02:26	1 GRAY R foul personal (3 - 8)			10 LOCKE N foul drawn (1)
02:26		79-68	11	10 LOCKE N 1&1 free throw 1 made (7)
02:26		79-69	10	10 LOCKE N 1&1 free throw 2 made (8)
02:11	4 BARNES S 2pt FG outside the paint, jump shot made (17)	81-69	12	
02:11	4 BARNES S foul drawn (4)			0 GLOVER Q foul shooting (1 - 10)
02:11	4 BARNES S free throw 1 - 1 missed			
02:11				12 CASTLETON C defensive rebound (7)
02:10				22 APPLEBY T substitution in



Florida at Florida State

12/12/20 Donald L. Tucker Center, Tallahassee
2020-21 Men's Basketball

Game Time: 11:00 AM

Game Duration: 2:25

Attendance: 2,761

Officials: Ted Valentine, Lee Cassell, Doug Shows

Game Time	FSU	Score	Diff	UF
02:10				0 GLOVER Q substitution out
02:00	2 POLITE A foul drawn (3)			1 MANN T foul offensive (4 - 11)
02:00				1 MANN T turnover offensive (3)
01:58	2 POLITE A turnover lost ball (1)			
01:49	1 GRAY R steal (1)			22 APPLEBY T turnover bad pass (5)
01:48				0 GLOVER Q substitution in
01:48				22 APPLEBY T substitution out
01:32	23 WALKER M 2pt FG from turnover in the paint, driving layup blocked			
01:32				12 CASTLETON C block (1)
01:28				23 LEWIS S defensive rebound (4)
01:15	10 OSBORNE M foul personal (4 - 9)			12 CASTLETON C foul drawn (2)
01:15	10 OSBORNE M substitution out			
01:15	0 EVANS R substitution in			
01:15				12 CASTLETON C 1&1 free throw 1 missed
01:15	1 GRAY R defensive rebound (7)			
00:52	0 EVANS R 2pt FG in the paint, floating jump shot missed			
00:50				0 GLOVER Q defensive rebound (2)
00:46		81-71	10	12 CASTLETON C 2pt FG fast break in the paint, dunk, made (7)
00:46				1 MANN T assist (7)
00:46				Timeout 60 Sec
00:46				10 LOCKE N substitution out
00:46				12 CASTLETON C substitution out
00:46				4 DURUJI A substitution in
00:46				22 APPLEBY T substitution in
00:46	Timeout 30 Sec			
00:39	0 EVANS R turnover bad pass (1)			
00:32				0 GLOVER Q turnover travel (2)
00:32	Timeout 60 Sec			
00:29	23 WALKER M foul drawn (8)			22 APPLEBY T foul personal (3 - 12)
00:29	23 WALKER M free throw 1 - 2 made (16)	82-71	11	
00:29	23 WALKER M free throw 2 - 2 made (17)	83-71	12	
00:21				1 MANN T 2pt FG in the paint, floating jump shot missed
00:18	1 GRAY R defensive rebound (8)			
END OF GAME				
FSU 83-71 UF				



Florida at Florida State

12/12/20 Donald L. Tucker Center, Tallahassee
2020-21 Men's Basketball

Game Time: 11:00 AM
Game Duration: 2:25
Attendance: 2,761

Officials: Ted Valentine, Lee Cassell, Doug Shows

Florida - 36

NO.	Name	F	Min	FG			3P			FT			Rebounds			Fouls		TP	AS	TO	ST	Blocks		+/-
				M-A	M-A	M-A	OR	DR	TOT	PF	FD	BS	BA											
11	Keyontae Johnson	F	00:00																					
12	Colin Castleton	F	08:25	3-3	0-0	0-1	2	2	4	1	1	6	0	1	0	1	0	1	0	1	0	6		
1	Tre Mann	G	20:00	6-13	1-5	1-1	0	4	4	2	4	14	4	2	0	0	1	0	0	0	1	-2		
10	Noah Locke	G	10:53	1-2	1-2	2-2	0	0	0	1	1	5	1	2	0	0	0	0	0	0	0	3		
23	Scottie Lewis	G	20:00	2-5	2-2	0-0	0	2	2	2	0	6	1	1	1	2	0	0	0	2	0	-2		
4	Anthony Duruji		04:12	0-1	0-0	0-0	0	1	1	2	0	0	0	0	0	0	0	0	0	0	0	-3		
5	Omar Payne		10:49	0-0	0-0	0-0	0	1	1	1	0	0	0	0	0	0	0	0	0	2	0	-6		
15	Osayi Osifo		08:31	0-0	0-0	2-2	0	2	2	1	1	2	0	0	0	0	0	0	0	1	0	-2		
22	Tyree Appleby		10:46	1-4	1-2	0-0	0	1	1	1	2	3	0	3	1	0	1	0	1	0	1	-3		
0	Ques Glover		05:55	0-1	0-0	0-0	0	1	1	1	0	0	1	1	0	0	0	1	0	0	1	2		
44	Niels Lane		00:29	0-0	0-0	0-0	0	0	0	0	0	0	0	0	0	0	0	0	0	0	0	-3		
Team							2	0	2			0			0									
Totals				13-29	5-11	5-6	4	14	18	12	9	36	7	10	2	6	3					-2		

Shooting By Period		
2 nd FG%	13-29	44.8%
3PT%	5-11	45.5%
FT%	5-6	83.3%
GM FG%	13-29	44.8%
3PT%	5-11	45.5%
FT%	5-6	83.3%

Dead Ball Rebounds: 0, 0

Technical Fouls: Coach 2nd 12:07

Florida State - 38

NO.	Name	F	Min	FG			3P			FT			Rebounds			Fouls		TP	AS	TO	ST	Blocks		+/-
				M-A	M-A	M-A	OR	DR	TOT	PF	FD	BS	BA											
1	RaiQuan Gray	F	16:00	1-3	0-0	1-2	1	4	5	1	1	3	2	2	1	2	0	3				2	0	3
5	Balsa Koprivica	C	09:03	3-6	0-0	0-1	0	2	2	0	1	6	0	1	0	1	3	2				1	3	2
2	Anthony Polite	G	13:40	1-2	0-0	0-0	0	1	1	1	1	2	1	1	1	0	0	-1				0	0	-1
4	Scottie Barnes	G	14:02	2-4	0-0	0-1	0	2	2	2	1	4	2	1	1	0	1	-2				0	1	-2
23	M.J. Walker	G	14:33	1-2	0-0	8-8	0	0	0	0	5	10	2	1	2	0	1	1				0	1	1
0	RayQuan Evans		09:43	0-2	0-1	3-3	0	1	1	2	1	3	1	1	0	0	0	6				0	0	6
10	Malik Osborne		10:48	1-4	0-1	0-0	1	1	2	2	1	2	0	1	0	0	0	-3				0	0	-3
24	Sardaar Calhoun		05:27	1-3	1-1	0-0	0	0	0	0	0	3	1	0	1	0	1	1				0	1	1
31	Wyatt Wilkes		03:52	1-1	1-1	0-0	0	0	0	0	0	3	0	0	0	0	0	2				0	0	2
34	Tanor Ngom		02:52	1-1	0-0	0-0	0	0	0	1	1	2	0	0	0	0	0	1				0	0	1
Team							3	2	5			0			0									
Totals				12-28	2-4	12-15	5	13	18	9	12	38	9	8	6	3	6	2						

Shooting By Period		
2 nd FG%	12-28	42.9%
3PT%	2-4	50.0%
FT%	12-15	80%
GM FG%	12-28	42.9%
3PT%	2-4	50.0%
FT%	12-15	80.0%

Dead Ball Rebounds: 0, 0

Technical Fouls: NONE

	UF	FSU
Biggest lead	0 (1 st 20:00)	18 (2 nd 14:44)
Best Scoring Run	7 (2 nd 2:26)	9 (2 nd 14:44)
Lead Changes	0	
Times Tied	0	
Time with Lead	00:00	19:37

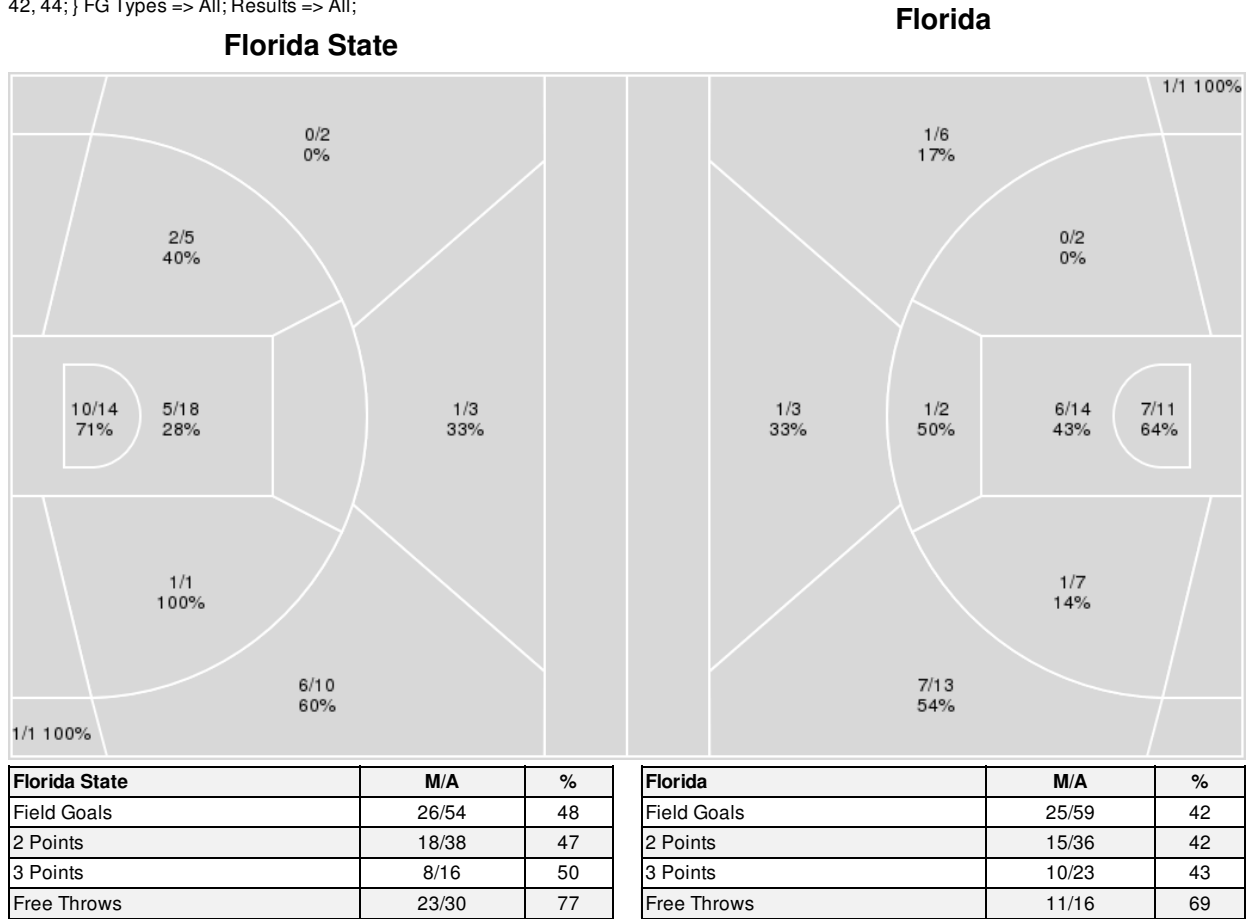
Points from	UF	FSU
Turnovers	4	10
Paint	16	16
Second Chance	5	4
Fast Breaks	6	8
Bench	5	13

	Period by Period Scoring		
	1st	2nd	TOT
UF	35	36	71
FSU	45	38	83



Officials: Ted Valentine, Lee Cassell, Doug Shows

{ Players => 0, 1, 2, 4, 5, 10, 11, 12, 15, 20, 23, 24, 30, 31, 33, 34, 40, 42, 44;} FG Types => All; Results => All;





Florida at Florida State

12/12/20 Donald L. Tucker Center, Tallahassee
2020-21 Men's Basketball

Game Time: 11:00 AM
Game Duration: 2:25
Attendance: 2,761

Officials: Ted Valentine, Lee Cassell, Doug Shows

Florida

No	Name	Mins		Score		Points Diff		Points per Min		Assists		Rebounds		Steals		Turnovers	
		On	Off	On	Off	On	Off	On	Off	On	Off	On	Off	On	Off	On	Off
0	Ques Glover	12:25	27:35	27 - 28	44 - 55	-1	-11	2.17	1.60	4	10	14	20	1	5	4	16
1	Tre Mann	29:28	10:32	55 - 50	16 - 33	5	-17	1.87	1.52	12	2	27	7	6	0	15	5
4	Anthony Duruji	13:26	26:34	18 - 28	53 - 55	-10	-2	1.34	1.99	2	12	11	23	0	6	8	12
5	Omar Payne	16:01	23:59	23 - 34	48 - 49	-11	-1	1.44	2.00	5	9	12	22	2	4	9	11
10	Noah Locke	24:16	15:44	42 - 57	29 - 26	-15	3	1.73	1.84	11	3	19	15	4	2	13	7
11	Keyontae Johnson	03:42	36:18	11 - 3	60 - 80	8	-20	2.97	1.65	4	10	3	31	4	2	1	19
12	Colin Castleton	21:28	18:32	48 - 39	23 - 44	9	-21	2.24	1.24	9	5	22	12	4	2	8	12
15	Osayi Osifo	14:50	25:10	26 - 40	45 - 43	-14	2	1.75	1.79	3	11	11	23	1	5	7	13
22	Tyree Appleby	23:15	16:45	32 - 49	39 - 34	-17	5	1.38	2.33	6	8	15	19	2	4	15	5
23	Scottie Lewis	38:40	01:20	67 - 80	4 - 3	-13	1	1.73	3.00	13	1	31	3	6	0	20	0
44	Niels Lane	02:29	37:31	6 - 7	65 - 76	-1	-11	2.42	1.73	1	13	5	29	0	6	0	20

Florida State

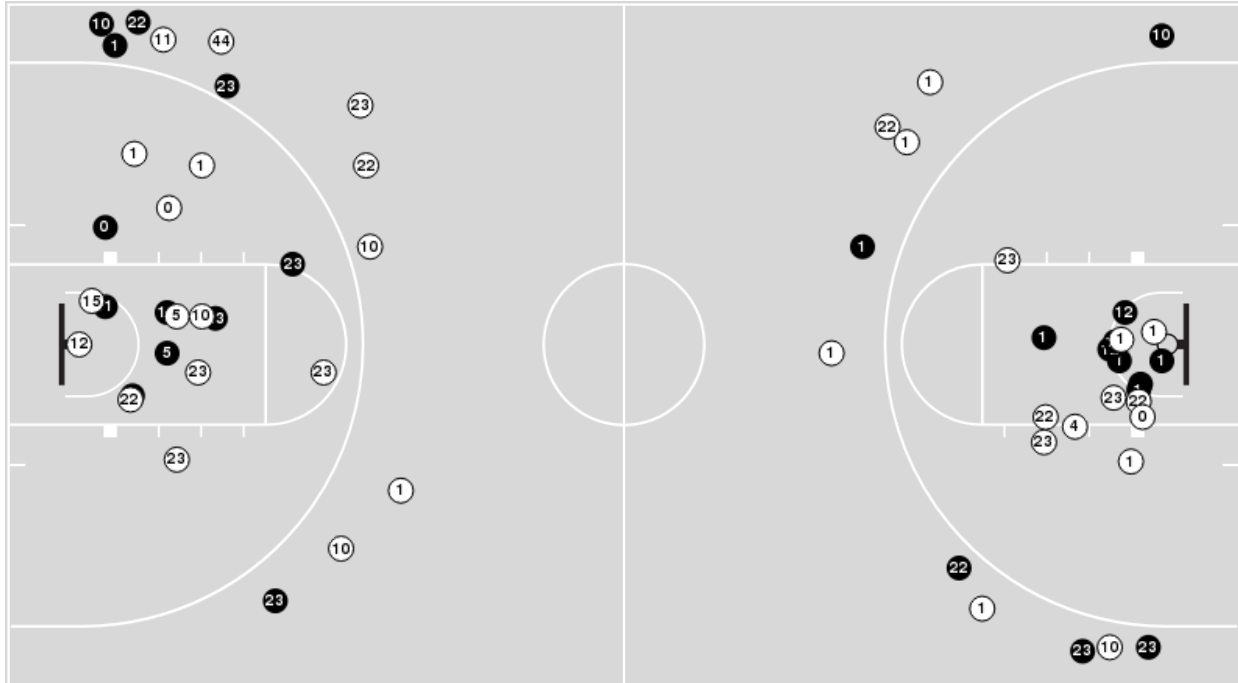
No	Name	Mins		Score		Points Diff		Points per Min		Assists		Rebounds		Steals		Turnovers	
		On	Off	On	Off	On	Off	On	Off	On	Off	On	Off	On	Off	On	Off
0	RayQuan Evans	18:21	21:39	39 - 32	44 - 39	7	5	2.13	2.03	6	11	16	17	2	6	6	10
1	RaiQuan Gray	23:38	16:22	43 - 44	40 - 27	-1	13	1.82	2.44	8	9	20	13	5	3	9	7
2	Anthony Polite	27:36	12:24	61 - 51	22 - 20	10	2	2.21	1.77	14	3	24	9	6	2	10	6
4	Scottie Barnes	27:48	12:12	60 - 50	23 - 21	10	2	2.16	1.89	13	4	23	10	8	0	12	4
5	Balsa Koprivica	16:26	23:34	24 - 33	59 - 38	-9	21	1.46	2.50	6	11	15	18	4	4	9	7
10	Malik Osborne	20:32	19:28	41 - 36	42 - 35	5	7	2.00	2.16	9	8	15	18	6	2	6	10
11	Nathanael Jack	03:12	36:48	8 - 6	75 - 65	2	10	2.50	2.04	2	15	3	30	0	8	1	15
15	Quincy Ballard	01:32	38:28	4 - 0	79 - 71	4	8	2.61	2.05	1	16	1	32	0	8	1	15
23	M.J. Walker	29:37	10:23	65 - 55	18 - 16	10	2	2.19	1.73	12	5	25	8	6	2	14	2
24	Sardaar Calhoun	07:29	32:31	9 - 11	74 - 60	-2	14	1.20	2.28	3	14	5	28	2	6	2	14
31	Wyatt Wilkes	17:34	22:26	43 - 29	40 - 42	14	-2	2.45	1.78	7	10	13	20	1	7	7	9
34	Tanor Ngom	06:15	33:45	18 - 11	65 - 60	7	5	2.88	1.93	4	13	5	28	0	8	3	13



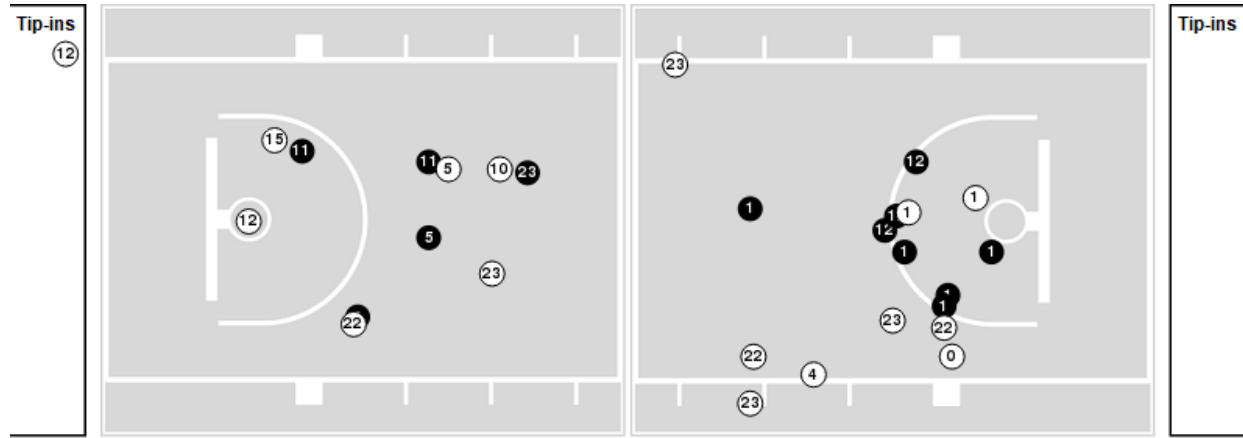
Officials: Ted Valentine, Lee Cassell, Doug Shows

Players => AllFG Types=>AllResults=>All
Florida

All Field Goals



Blow Up Chart



● Made ○ Missed N - Player Number

Florida	M/A	%
Field Goals	25/59	42
2 Points	15/36	42
3 Points	10/23	43
Free Throws	11/16	69

Florida	M/A	%
Points in the Paint	26 (13 / 25)	52
Fast Break Points	17 (9/9)	100
Second Chance Points	12 (7/11)	64
Effective FG%	51	

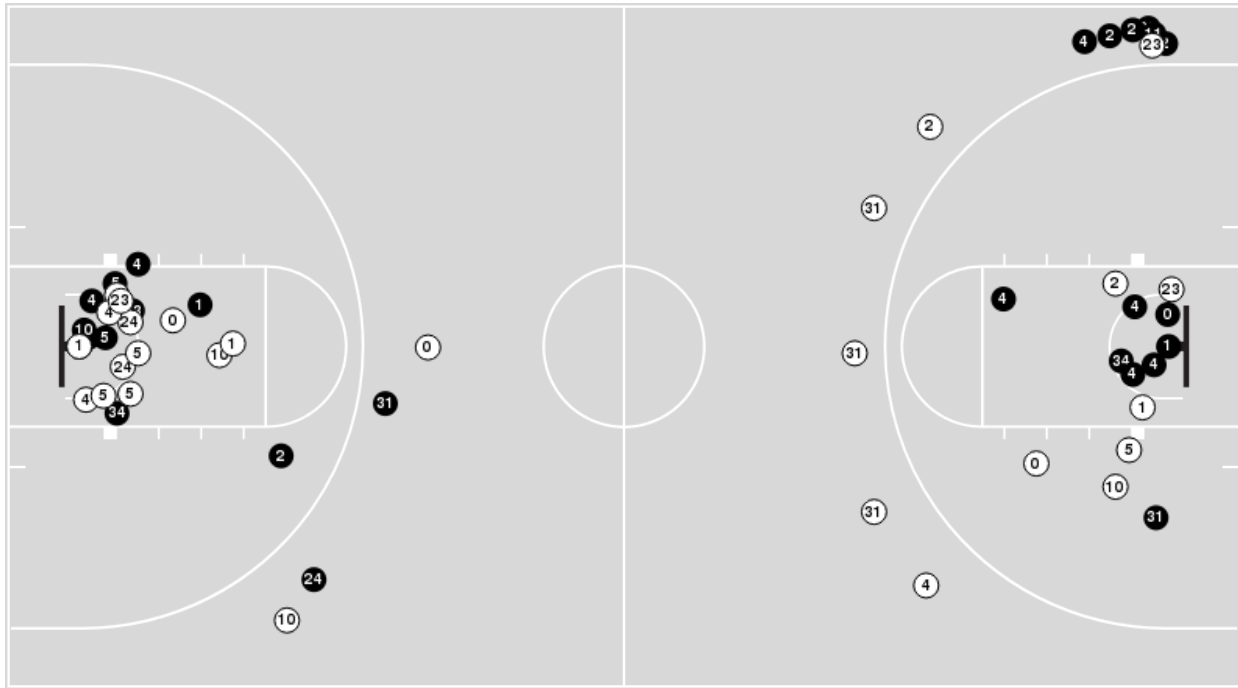


Officials: Ted Valentine, Lee Cassell, Doug Shows

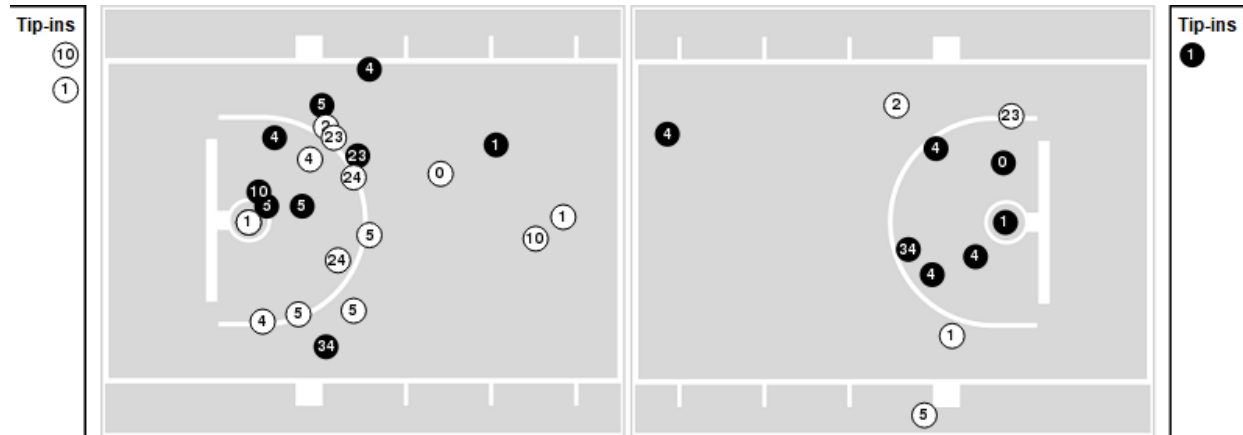
Players => 0, 1, 2, 4, 5, 10, 11, 12, 15, 20, 23, 24, 30, 31, 33, 34, 40, 42, 44FG Types=>AllResults=>All

Florida State

All Field Goals



Blow Up Chart



● Made ○ Missed N - Player Number

Florida State	M/A	%
Field Goals	26/54	48
2 Points	18/38	47
3 Points	8/16	50
Free Throws	23/30	77

Florida State	M/A	%
Points in the Paint	30 (15 / 32)	47
Fast Break Points	12 (10/15)	67
Second Chance Points	8 (5/9)	56
Effective FG%	56	



Florida at Florida State

12/12/20 Donald L. Tucker Center, Tallahassee
2020-21 Men's Basketball

Game Time: 11:00 AM
Game Duration: 2:25
Attendance: 2,761

Officials: Ted Valentine, Lee Cassell, Doug Shows

Florida

Lineup	Quarter On	Time On	Quarter Off	Time Off	Time on Court	Score	Score Diff	Reb	Stl	Tov	Ass	PPP
1- Mann T/ 10- Locke N/ 11- Johnson K/ 12- Castleton C/ 23- Lewis S/	1	20:00	1	16:53	03:07	9-3	6	3	3	1	3	1.2097
1- Mann T/ 11- Johnson K/ 12- Castleton C/ 22- Appleby T/ 23- Lewis S/	1	16:53	1	16:18	00:35	2-0	2	0	1	0	1	1.0000
1- Mann T/ 5- Payne O/ 11- Johnson K/ 22- Appleby T/ 23- Lewis S/	1	16:18	1	16:18	00:00	0-0	0	0	0	0	0	0.0000
1- Mann T/ 5- Payne O/ 10- Locke N/ 22- Appleby T/ 23- Lewis S/	1	16:18	1	14:00	02:18	0-6	-6	1	0	2	0	0.0000
0- Glover Q/ 4- Duruji A/ 5- Payne O/ 10- Locke N/ 22- Appleby T/	1	14:00	1	14:00	00:00	0-1	-1	0	0	0	0	0.0000
0- Glover Q/ 4- Duruji A/ 5- Payne O/ 10- Locke N/ 44- Lane N/	1	14:00	1	12:40	01:20	4-2	2	3	0	0	1	1.3333
0- Glover Q/ 4- Duruji A/ 5- Payne O/ 22- Appleby T/ 23- Lewis S/	1	12:40	1	12:08	00:32	0-0	0	0	0	1	0	0.0000
1- Mann T/ 4- Duruji A/ 12- Castleton C/ 22- Appleby T/ 23- Lewis S/	1	12:08	1	09:19	02:49	5-2	3	4	0	2	1	1.0504
1- Mann T/ 4- Duruji A/ 5- Payne O/ 22- Appleby T/ 23- Lewis S/	1	09:19	1	08:52	00:27	3-0	3	1	0	0	0	3.0000
4- Duruji A/ 5- Payne O/ 10- Locke N/ 22- Appleby T/ 23- Lewis S/	1	08:52	1	08:17	00:35	0-3	-3	0	0	0	0	0.0000
4- Duruji A/ 10- Locke N/ 15- Osifo O/ 22- Appleby T/ 23- Lewis S/	1	08:17	1	06:44	01:33	0-7	-7	0	0	2	0	0.0000
4- Duruji A/ 10- Locke N/ 12- Castleton C/ 22- Appleby T/ 23- Lewis S/	1	06:44	1	05:36	01:08	0-2	-2	0	0	1	0	0.0000
10- Locke N/ 12- Castleton C/ 15- Osifo O/ 22- Appleby T/ 23- Lewis S/	1	05:36	1	04:38	00:58	2-5	-3	0	0	0	0	1.0000
0- Glover Q/ 12- Castleton C/ 15- Osifo O/ 22- Appleby T/ 23- Lewis S/	1	04:38	1	03:04	01:34	3-3	0	1	0	0	0	2.0833
0- Glover Q/ 12- Castleton C/ 15- Osifo O/ 23- Lewis S/ 44- Lane N/	1	03:04	1	02:24	00:40	2-2	0	2	0	0	0	1.1364
0- Glover Q/ 10- Locke N/ 12- Castleton C/ 15- Osifo O/ 23- Lewis S/	1	02:24	1	01:30	00:54	3-2	1	1	0	0	1	3.0000
0- Glover Q/ 4- Duruji A/ 10- Locke N/ 12- Castleton C/ 23- Lewis S/	1	01:30	1	00:40	00:50	2-4	-2	0	0	1	0	1.0000
0- Glover Q/ 10- Locke N/ 12- Castleton C/ 15- Osifo O/ 23- Lewis S/	1	00:40	1	00:11	00:28	0-2	-2	0	0	0	0	0.0000
0- Glover Q/ 1- Mann T/ 10- Locke N/ 15- Osifo O/ 23- Lewis S/	1	00:11	2	20:00	00:12	0-1	-1	0	0	0	0	0.0000
1- Mann T/ 4- Duruji A/ 10- Locke N/ 12- Castleton C/ 23- Lewis S/	2	20:00	2	19:31	00:29	0-1	-1	0	0	0	0	0.0000
1- Mann T/ 4- Duruji A/ 5- Payne O/ 10- Locke N/ 23- Lewis S/	2	19:31	2	19:31	00:00	0-0	0	0	0	0	0	0.0000
1- Mann T/ 5- Payne O/ 10- Locke N/ 15- Osifo O/ 23- Lewis S/	2	19:31	2	15:55	03:36	6-8	-2	3	0	2	1	1.0000
1- Mann T/ 5- Payne O/ 15- Osifo O/ 22- Appleby T/ 23- Lewis S/	2	15:55	2	15:15	00:40	0-0	0	1	0	1	0	0.0000
0- Glover Q/ 1- Mann T/ 5- Payne O/ 15- Osifo O/ 23- Lewis S/	2	15:15	2	13:25	01:50	3-5	-2	1	1	1	0	0.8721
0- Glover Q/ 1- Mann T/ 12- Castleton C/ 15- Osifo O/ 23- Lewis S/	2	13:25	2	13:25	00:00	1-0	1	0	0	0	0	2.2727
0- Glover Q/ 1- Mann T/ 4- Duruji A/ 12- Castleton C/ 23- Lewis S/	2	13:25	2	12:53	00:32	0-0	0	1	0	0	0	0.0000
1- Mann T/ 4- Duruji A/ 12- Castleton C/ 22- Appleby T/ 23- Lewis S/	2	12:53	2	10:28	02:25	4-4	0	2	0	0	0	2.0000
1- Mann T/ 12- Castleton C/ 15- Osifo O/ 22- Appleby T/ 23- Lewis S/	2	10:28	2	08:38	01:50	6-5	1	2	0	1	1	1.3514
1- Mann T/ 5- Payne O/ 15- Osifo O/ 22- Appleby T/ 23- Lewis S/	2	08:38	2	08:03	00:35	0-0	0	0	0	0	0	0.0000
1- Mann T/ 5- Payne O/ 22- Appleby T/ 23- Lewis S/ 44- Lane N/	2	08:03	2	07:34	00:29	0-3	-3	0	0	0	0	0.0000
1- Mann T/ 5- Payne O/ 10- Locke N/ 22- Appleby T/ 23- Lewis S/	2	07:34	2	03:55	03:39	7-6	1	2	1	2	3	0.7778
0- Glover Q/ 1- Mann T/ 10- Locke N/ 12- Castleton C/ 23- Lewis S/	2	03:55	2	02:10	01:45	7-4	3	3	0	0	1	2.4306
1- Mann T/ 10- Locke N/ 12- Castleton C/ 22- Appleby T/ 23- Lewis S/	2	02:10	2	01:48	00:22	0-0	0	1	0	2	0	0.0000
0- Glover Q/ 1- Mann T/ 10- Locke N/ 12- Castleton C/ 23- Lewis S/	2	01:48	2	00:46	01:02	2-0	2	2	0	0	1	1.3889
0- Glover Q/ 1- Mann T/ 4- Duruji A/ 22- Appleby T/ 23- Lewis S/	2	00:46	2	00:00	00:46	0-2	-2	0	0	1	0	0.0000



Florida at Florida State

12/12/20 Donald L. Tucker Center, Tallahassee
2020-21 Men's Basketball

Game Time: 11:00 AM

Game Duration: 2:25

Attendance: 2,761

Officials: Ted Valentine, Lee Cassell, Doug Shows

Florida State

Lineup	Quarter On	Time On	Quarter Off	Time Off	Time on Court	Score	Score Diff	Reb	Stl	Tov	Ass	PPP
1- Gray R/ 2- Polite A/ 4- Barnes S/ 5- Koprivica B/ 23- Walker M/	1	20:00	1	16:53	03:07	2-9	-7	4	0	3	0	0.2688
1- Gray R/ 2- Polite A/ 4- Barnes S/ 10- Osborne M/ 23- Walker M/	1	16:53	1	14:00	02:53	7-2	5	2	1	1	2	1.4344
0- Evans R/ 1- Gray R/ 2- Polite A/ 10- Osborne M/ 23- Walker M/	1	14:00	1	14:00	00:00	1-0	1	0	0	0	0	2.2727
0- Evans R/ 1- Gray R/ 10- Osborne M/ 23- Walker M/ 31- Wilkes W/	1	14:00	1	12:40	01:20	2-4	-2	1	0	0	0	0.6667
0- Evans R/ 5- Koprivica B/ 10- Osborne M/ 24- Calhoun S/ 31- Wilkes W/	1	12:40	1	10:38	02:02	0-3	-3	0	0	1	0	0.0000
1- Gray R/ 2- Polite A/ 4- Barnes S/ 23- Walker M/ 34- Ngom T/	1	10:38	1	10:20	00:18	0-1	-1	0	0	0	0	0.0000
2- Polite A/ 4- Barnes S/ 23- Walker M/ 31- Wilkes W/ 34- Ngom T/	1	10:20	1	07:55	02:25	8-4	4	2	0	1	3	1.6393
2- Polite A/ 4- Barnes S/ 15- Ballard Q/ 23- Walker M/ 31- Wilkes W/	1	07:55	1	06:23	01:32	4-0	4	1	0	1	1	1.3889
2- Polite A/ 4- Barnes S/ 10- Osborne M/ 23- Walker M/ 31- Wilkes W/	1	06:23	1	05:36	00:47	4-0	4	1	1	0	0	2.1277
2- Polite A/ 4- Barnes S/ 10- Osborne M/ 11- Jack N/ 31- Wilkes W/	1	05:36	1	05:16	00:20	0-0	0	0	0	0	0	0.0000
0- Evans R/ 2- Polite A/ 10- Osborne M/ 11- Jack N/ 31- Wilkes W/	1	05:16	1	02:54	02:22	8-5	3	2	0	0	2	2.7778
0- Evans R/ 2- Polite A/ 5- Koprivica B/ 11- Jack N/ 31- Wilkes W/	1	02:54	1	02:54	00:00	0-0	0	0	0	0	0	0.0000
0- Evans R/ 5- Koprivica B/ 11- Jack N/ 23- Walker M/ 31- Wilkes W/	1	02:54	1	02:24	00:30	0-1	-1	1	0	1	0	0.0000
0- Evans R/ 4- Barnes S/ 5- Koprivica B/ 23- Walker M/ 31- Wilkes W/	1	02:24	1	00:40	01:44	6-6	0	0	0	0	0	1.5000
0- Evans R/ 4- Barnes S/ 23- Walker M/ 31- Wilkes W/ 34- Ngom T/	1	00:40	1	00:11	00:28	2-0	2	0	0	0	0	2.2727
0- Evans R/ 2- Polite A/ 4- Barnes S/ 31- Wilkes W/ 34- Ngom T/	1	00:11	2	20:00	00:12	1-0	1	1	0	0	0	2.2727
1- Gray R/ 2- Polite A/ 4- Barnes S/ 5- Koprivica B/ 23- Walker M/	2	20:00	2	15:55	04:05	9-6	3	3	2	0	3	1.3081
0- Evans R/ 4- Barnes S/ 5- Koprivica B/ 10- Osborne M/ 24- Calhoun S/	2	15:55	2	13:25	02:30	5-3	2	3	2	1	2	1.0000
0- Evans R/ 1- Gray R/ 2- Polite A/ 10- Osborne M/ 24- Calhoun S/	2	13:25	2	10:28	02:57	4-5	-1	2	0	0	1	1.0309
0- Evans R/ 1- Gray R/ 2- Polite A/ 23- Walker M/ 31- Wilkes W/	2	10:28	2	10:28	00:00	1-0	1	0	0	0	0	2.2727
1- Gray R/ 2- Polite A/ 4- Barnes S/ 23- Walker M/ 31- Wilkes W/	2	10:28	2	10:26	00:02	0-3	-3	0	0	0	0	0.0000
1- Gray R/ 4- Barnes S/ 23- Walker M/ 31- Wilkes W/ 34- Ngom T/	2	10:26	2	09:37	00:49	0-0	0	0	0	1	0	0.0000
0- Evans R/ 1- Gray R/ 23- Walker M/ 31- Wilkes W/ 34- Ngom T/	2	09:37	2	07:34	02:03	7-3	4	2	0	1	1	1.8041
0- Evans R/ 1- Gray R/ 5- Koprivica B/ 23- Walker M/ 31- Wilkes W/	2	07:34	2	06:36	00:58	0-0	0	2	0	1	0	0.0000
2- Polite A/ 4- Barnes S/ 5- Koprivica B/ 10- Osborne M/ 23- Walker M/	2	06:36	2	05:06	01:30	2-5	-3	2	0	2	1	0.5814
1- Gray R/ 2- Polite A/ 4- Barnes S/ 10- Osborne M/ 23- Walker M/	2	05:06	2	01:15	03:51	8-9	-1	2	2	1	1	0.8696
0- Evans R/ 1- Gray R/ 2- Polite A/ 4- Barnes S/ 23- Walker M/	2	01:15	2	00:00	01:15	2-2	0	2	0	1	0	0.6944



Florida at Florida State

12/12/20 Donald L. Tucker Center, Tallahassee
2020-21 Men's Basketball

Game Time: 11:00 AM

Game Duration: 2:25

Attendance: 2,761

Officials: Ted Valentine, Lee Cassell, Doug Shows

Florida

Lineup	Time	Score	Score Diff	Pts/Min	Reb	Stl	Tov	Ass	PPP
1- Mann T/ 5- Payne O/ 10- Locke N/ 22- Appleby T/ 23- Lewis S/	05:57	7-12	-5	1.1765	3	1	4	3	0.5833
1- Mann T/ 4- Duruji A/ 12- Castleton C/ 22- Appleby T/ 23- Lewis S/	05:14	9-6	3	1.7197	6	0	2	1	1.3314
1- Mann T/ 5- Payne O/ 10- Locke N/ 15- Osifo O/ 23- Lewis S/	03:36	6-8	-2	1.6667	3	0	2	1	1.0000
1- Mann T/ 10- Locke N/ 11- Johnson K/ 12- Castleton C/ 23- Lewis S/	03:07	9-3	6	2.8877	3	3	1	3	1.2097
0- Glover Q/ 1- Mann T/ 10- Locke N/ 12- Castleton C/ 23- Lewis S/	02:47	9-4	5	3.2335	5	0	0	2	2.0833
0- Glover Q/ 1- Mann T/ 5- Payne O/ 15- Osifo O/ 23- Lewis S/	01:50	3-5	-2	1.6364	1	1	1	0	0.8721
1- Mann T/ 12- Castleton C/ 15- Osifo O/ 22- Appleby T/ 23- Lewis S/	01:50	6-5	1	3.2727	2	0	1	1	1.3514
0- Glover Q/ 12- Castleton C/ 15- Osifo O/ 22- Appleby T/ 23- Lewis S/	01:34	3-3	0	1.9149	1	0	0	0	2.0833
4- Duruji A/ 10- Locke N/ 15- Osifo O/ 22- Appleby T/ 23- Lewis S/	01:33	0-7	-7	0.0000	0	0	2	0	0.0000
0- Glover Q/ 10- Locke N/ 12- Castleton C/ 15- Osifo O/ 23- Lewis S/	01:22	3-4	-1	2.1951	1	0	0	1	1.5000
0- Glover Q/ 4- Duruji A/ 5- Payne O/ 10- Locke N/ 44- Lane N/	01:20	4-2	2	3.0000	3	0	0	1	1.3333
1- Mann T/ 5- Payne O/ 15- Osifo O/ 22- Appleby T/ 23- Lewis S/	01:15	0-0	0	0.0000	1	0	1	0	0.0000
4- Duruji A/ 10- Locke N/ 12- Castleton C/ 22- Appleby T/ 23- Lewis S/	01:08	0-2	-2	0.0000	0	0	1	0	0.0000
10- Locke N/ 12- Castleton C/ 15- Osifo O/ 22- Appleby T/ 23- Lewis S/	00:58	2-5	-3	2.0690	0	0	0	0	1.0000
0- Glover Q/ 4- Duruji A/ 10- Locke N/ 12- Castleton C/ 23- Lewis S/	00:50	2-4	-2	2.4000	0	0	1	0	1.0000
0- Glover Q/ 1- Mann T/ 4- Duruji A/ 22- Appleby T/ 23- Lewis S/	00:46	0-2	-2	0.0000	0	0	1	0	0.0000
0- Glover Q/ 12- Castleton C/ 15- Osifo O/ 23- Lewis S/ 44- Lane N/	00:40	2-2	0	3.0000	2	0	0	0	1.1364
1- Mann T/ 11- Johnson K/ 12- Castleton C/ 22- Appleby T/ 23- Lewis S/	00:35	2-0	2	3.4286	0	1	0	1	1.0000
4- Duruji A/ 5- Payne O/ 10- Locke N/ 22- Appleby T/ 23- Lewis S/	00:35	0-3	-3	0.0000	0	0	0	0	0.0000
0- Glover Q/ 4- Duruji A/ 5- Payne O/ 22- Appleby T/ 23- Lewis S/	00:32	0-0	0	0.0000	0	0	1	0	0.0000
0- Glover Q/ 1- Mann T/ 4- Duruji A/ 12- Castleton C/ 23- Lewis S/	00:32	0-0	0	0.0000	1	0	0	0	0.0000
1- Mann T/ 4- Duruji A/ 10- Locke N/ 12- Castleton C/ 23- Lewis S/	00:29	0-1	-1	0.0000	0	0	0	0	0.0000
1- Mann T/ 5- Payne O/ 22- Appleby T/ 23- Lewis S/ 44- Lane N/	00:29	0-3	-3	0.0000	0	0	0	0	0.0000
1- Mann T/ 4- Duruji A/ 5- Payne O/ 22- Appleby T/ 23- Lewis S/	00:27	3-0	3	6.6667	1	0	0	0	3.0000
1- Mann T/ 10- Locke N/ 12- Castleton C/ 22- Appleby T/ 23- Lewis S/	00:22	0-0	0	0.0000	1	0	2	0	0.0000
0- Glover Q/ 1- Mann T/ 10- Locke N/ 15- Osifo O/ 23- Lewis S/	00:12	0-1	-1	0.0000	0	0	0	0	0.0000
1- Mann T/ 5- Payne O/ 11- Johnson K/ 22- Appleby T/ 23- Lewis S/	00:00	0-0	0	NaN	0	0	0	0	0.0000
0- Glover Q/ 4- Duruji A/ 5- Payne O/ 10- Locke N/ 22- Appleby T/	00:00	0-1	-1	NaN	0	0	0	0	0.0000
1- Mann T/ 4- Duruji A/ 5- Payne O/ 10- Locke N/ 23- Lewis S/	00:00	0-0	0	NaN	0	0	0	0	0.0000
0- Glover Q/ 1- Mann T/ 12- Castleton C/ 15- Osifo O/ 23- Lewis S/	00:00	1-0	1	∞	0	0	0	0	2.2727



Florida at Florida State

12/12/20 Donald L. Tucker Center, Tallahassee
2020-21 Men's Basketball

Game Time: 11:00 AM
Game Duration: 2:25
Attendance: 2,761

Officials: Ted Valentine, Lee Cassell, Doug Shows

Florida State

Lineup	Time	Score	Score Diff	Pts/Min	Reb	Stl	Tov	Ass	PPP
1- Gray R/ 2- Polite A/ 4- Barnes S/ 5- Koprivica B/ 23- Walker M/	07:12	11-15	-4	1.5278	7	2	3	3	0.7682
1- Gray R/ 2- Polite A/ 4- Barnes S/ 10- Osborne M/ 23- Walker M/	06:44	15-11	4	2.2277	4	3	2	3	1.0653
0- Evans R/ 1- Gray R/ 2- Polite A/ 10- Osborne M/ 24- Calhoun S/	02:57	4-5	-1	1.3559	2	0	0	1	1.0309
0- Evans R/ 4- Barnes S/ 5- Koprivica B/ 10- Osborne M/ 24- Calhoun S/	02:30	5-3	2	2.0000	3	2	1	2	1.0000
2- Polite A/ 4- Barnes S/ 23- Walker M/ 31- Wilkes W/ 34- Ngom T/	02:25	8-4	4	3.3103	2	0	1	3	1.6393
0- Evans R/ 2- Polite A/ 10- Osborne M/ 11- Jack N/ 31- Wilkes W/	02:22	8-5	3	3.3803	2	0	0	2	2.7778
0- Evans R/ 1- Gray R/ 23- Walker M/ 31- Wilkes W/ 34- Ngom T/	02:03	7-3	4	3.4146	2	0	1	1	1.8041
0- Evans R/ 5- Koprivica B/ 10- Osborne M/ 24- Calhoun S/ 31- Wilkes W/	02:02	0-3	-3	0.0000	0	0	1	0	0.0000
0- Evans R/ 4- Barnes S/ 5- Koprivica B/ 23- Walker M/ 31- Wilkes W/	01:44	6-6	0	3.4615	0	0	0	0	1.5000
2- Polite A/ 4- Barnes S/ 15- Ballard Q/ 23- Walker M/ 31- Wilkes W/	01:32	4-0	4	2.6087	1	0	1	1	1.3889
2- Polite A/ 4- Barnes S/ 5- Koprivica B/ 10- Osborne M/ 23- Walker M/	01:30	2-5	-3	1.3333	2	0	2	1	0.5814
0- Evans R/ 1- Gray R/ 10- Osborne M/ 23- Walker M/ 31- Wilkes W/	01:20	2-4	-2	1.5000	1	0	0	0	0.6667
0- Evans R/ 1- Gray R/ 2- Polite A/ 4- Barnes S/ 23- Walker M/	01:15	2-2	0	1.6000	2	0	1	0	0.6944
0- Evans R/ 1- Gray R/ 5- Koprivica B/ 23- Walker M/ 31- Wilkes W/	00:58	0-0	0	0.0000	2	0	1	0	0.0000
1- Gray R/ 4- Barnes S/ 23- Walker M/ 31- Wilkes W/ 34- Ngom T/	00:49	0-0	0	0.0000	0	0	1	0	0.0000
2- Polite A/ 4- Barnes S/ 10- Osborne M/ 23- Walker M/ 31- Wilkes W/	00:47	4-0	4	5.1064	1	1	0	0	2.1277
0- Evans R/ 5- Koprivica B/ 11- Jack N/ 23- Walker M/ 31- Wilkes W/	00:30	0-1	-1	0.0000	1	0	1	0	0.0000
0- Evans R/ 4- Barnes S/ 23- Walker M/ 31- Wilkes W/ 34- Ngom T/	00:28	2-0	2	4.2857	0	0	0	0	2.2727
2- Polite A/ 4- Barnes S/ 10- Osborne M/ 11- Jack N/ 31- Wilkes W/	00:20	0-0	0	0.0000	0	0	0	0	0.0000
1- Gray R/ 2- Polite A/ 4- Barnes S/ 23- Walker M/ 34- Ngom T/	00:18	0-1	-1	0.0000	0	0	0	0	0.0000
0- Evans R/ 2- Polite A/ 4- Barnes S/ 31- Wilkes W/ 34- Ngom T/	00:12	1-0	1	5.0000	1	0	0	0	2.2727
1- Gray R/ 2- Polite A/ 4- Barnes S/ 23- Walker M/ 31- Wilkes W/	00:02	0-3	-3	0.0000	0	0	0	0	0.0000
0- Evans R/ 1- Gray R/ 2- Polite A/ 10- Osborne M/ 23- Walker M/	00:00	1-0	1	∞	0	0	0	0	2.2727
0- Evans R/ 2- Polite A/ 5- Koprivica B/ 11- Jack N/ 31- Wilkes W/	00:00	0-0	0	NaN	0	0	0	0	0.0000
0- Evans R/ 1- Gray R/ 2- Polite A/ 23- Walker M/ 31- Wilkes W/	00:00	1-0	1	∞	0	0	0	0	2.2727