



Officials: Bill Covington, Raymie Styons, Tim Comer

Gardner-Webb - 59

Record: 1-4

NO.	Name	F	Min	FG			3P			FT			Rebounds			Fouls		TP	AS	TO	ST	Blocks		+/-
				M-A	M-A	M-A	OR	DR	TOT	PF	FD	OR	DR	TOT	BS	BA								
14	Kareem Reid	F	15:01	1-1	0-0	0-0	1	1	2	4	1	2	0	0	1	0	1	0	0	1	0	3		
24	Ludovic Dufeal	F	22:05	1-4	1-2	0-0	0	3	3	4	3	3	1	0	0	0	0	0	0	0	0	-8		
00	Lance Terry	G	30:28	8-19	3-9	4-4	0	2	2	2	3	23	2	2	0	0	4	0	0	4	-18			
1	Jaheam Cornwall	G	32:03	1-7	1-7	4-4	1	6	7	2	3	7	2	4	0	0	0	0	0	0	-10			
3	Jacob Falko	G	27:10	0-7	0-4	2-2	1	4	5	1	1	2	3	1	1	1	1	2	1	2	-8			
23	Anthony Selden		20:26	2-6	2-5	0-0	0	3	3	2	3	6	0	4	1	0	0	0	0	-10				
4	D'Maurian Williams		12:17	1-5	1-4	3-5	0	0	0	0	4	6	0	0	3	0	0	0	0	-10				
11	Mick Lynott		10:51	1-1	0-0	0-0	0	1	1	2	0	2	2	0	0	0	0	0	0	6				
5	Jamaine Mann		14:26	1-3	0-1	0-2	0	1	1	4	1	2	0	1	1	0	1	0	1	-5				
2	Jordan Sears		08:26	1-3	1-1	0-0	0	1	1	1	0	3	0	1	0	0	0	1	0	-1				
25	Sammy Itodo		06:47	1-2	0-0	1-1	1	0	1	3	1	3	0	0	0	0	0	0	0	-4				
Team							3	1	4			0			0									
Totals				18-58	9-33	14-18	7	23	30	25	20	59	10	14	6	2	8	-13						

Shooting By Period		
1st FG%	7-30	23.3%
3PT%	5-20	25.0%
FT%	9-13	69.2%
2nd FG%	11-28	39.3%
3PT%	4-13	30.8%
FT%	5-5	100%
GM FG%	18-58	31.0%
3PT%	9-33	27.3%
FT%	14-18	77.8%

Dead Ball Rebounds: 1, 2

Technical Fouls::NONE

Florida State - 72

Record: 5-1

NO.	Name	F	Min	FG			3P			FT			Rebounds			Fouls		TP	AS	TO	ST	Blocks		+/-
				M-A	M-A	M-A	OR	DR	TOT	PF	FD	OR	DR	TOT	BS	BA								
1	RaiQuan Gray	F	24:55	1-5	0-4	2-2	0	8	8	2	1	4	2	1	4	2	1	1	1	2	0	3		
5	Balsa Koprivica	C	22:36	4-5	0-0	6-6	2	6	8	2	5	14	0	0	0	2	1	16	0	0	0			
2	Anthony Polite	G	27:51	5-8	1-3	4-7	2	7	9	2	7	15	1	0	2	1	0	19	2	1	0			
4	Scottie Barnes	G	21:49	2-7	1-3	1-2	1	1	2	2	1	6	5	2	2	1	0	10	2	2	1			
23	M.J. Walker	G	23:04	2-9	1-7	2-2	0	2	2	4	2	7	2	5	0	0	0	6	2	5	0			
0	RayQuan Evans		23:38	2-6	2-4	2-3	2	2	4	0	2	8	0	0	1	0	1	9	0	0	1			
24	Sardar Calhoun		10:15	0-3	0-2	2-2	0	1	1	0	2	2	0	0	0	0	0	-5	0	0	0			
31	Wyatt Wilkes		12:14	0-4	0-2	0-0	0	1	1	1	1	0	1	2	0	1	0	7	1	2	0			
34	Tanor Ngom		02:08	0-0	0-0	1-2	1	3	4	2	1	1	0	2	0	0	0	0	0	0	0			
10	Malik Osborne		16:35	3-7	0-2	2-3	6	2	8	4	2	8	0	4	0	1	0	-2	0	4	0			
11	Nathanael Jack		10:57	1-5	1-5	2-3	1	0	1	1	1	5	0	0	0	0	0	-6	0	0	0			
15	Quincy Ballard		01:54	0-0	0-0	0-0	0	0	0	0	0	0	0	0	0	0	0	0	0	0	0			
12	Justin Lindner		00:31	1-1	0-0	0-0	0	0	0	0	0	2	0	0	0	0	0	2	0	0	0			
20	Travis Light		00:31	0-1	0-1	0-0	1	0	1	0	0	0	0	0	0	0	0	2	0	0	0			
30	Harrison Prieto		00:31	0-0	0-0	0-0	0	0	0	0	0	0	0	0	0	0	0	2	0	0	0			
33	Will Miles		00:31	0-0	0-0	0-0	0	0	0	0	0	0	0	0	0	0	0	2	0	0	0			
Team							2	2	4			0			0									
Totals				21-61	6-33	24-32	18	35	53	20	25	72	11	16	6	8	2	13						

Shooting By Period		
1st FG%	8-29	27.6%
3PT%	3-19	15.8%
FT%	12-16	75%
2nd FG%	13-32	40.6%
3PT%	3-14	21.4%
FT%	12-16	75%
GM FG%	21-61	34.4%
3PT%	6-33	18.2%
FT%	24-32	75.0%

Dead Ball Rebounds: 5, 1

Technical Fouls::NONE

	GWU	FSU	Points from		Period by Period Scoring		
Biggest lead	6 (1 st 11:36)	13 (2 nd 0:04)	GWU	FSU	1st	2nd	TOT
Best Scoring Run	8 (1 st 11:36)	9 (1 st 8:27)	Turnovers	16	14		
Lead Changes	8		Paint	14	28		
Times Tied	7		Second Chance	8	19	GWU	28
Time with Lead	06:33	31:28	Fast Breaks	0	10	FSU	31
			Bench	22	26		41
							72



Officials: Bill Covington, Raymie Styons, Tim Comer

Period 1

Quarter Starters:

FSU	1 Gray R	2 Polite A	4 Barnes S	5 Koprivica B	23 Walker M
GWU	00 Terry L	1 Cornwall J	3 Falko J	14 Reid K	24 Duféal L

Game Time	FSU	Score	Diff	GWU
20:00	5 KOPRIVICA B jumpball won			14 REID K jumpball lost
19:40	5 KOPRIVICA B 2pt FG in the paint, alleyoop made (2)	2-0	2	
19:40	23 WALKER M assist (1)			
19:12				00 TERRY L 3pt FG , jump shot missed
19:05				14 REID K offensive rebound (1)
18:48		2-3	-1	00 TERRY L 3pt FG second chance, jump shot made (3)
18:27	23 WALKER M turnover bad pass (1)			
18:12				24 DUFEAL L 3pt FG from turnover, jump shot missed
18:08	2 POLITE A defensive rebound (1)			
18:06	4 BARNES S 3pt FG fast break, jump shot made (3)	5-3	2	
18:06	1 GRAY R assist (1)			
17:40				1 CORNWALL J 3pt FG , jump shot missed
17:35	4 BARNES S defensive rebound (1)			
17:16	1 GRAY R 3pt FG , jump shot missed			
17:12				1 CORNWALL J defensive rebound (1)
17:08				3 FALKO J 3pt FG , jump shot missed
17:04	5 KOPRIVICA B defensive rebound (1)			
16:58	2 POLITE A 3pt FG , jump shot missed			
16:54				14 REID K defensive rebound (2)
16:44				00 TERRY L 3pt FG , jump shot missed
16:39	1 GRAY R defensive rebound (1)			
16:17	5 KOPRIVICA B 2pt FG in the paint, layup blocked			
16:17				14 REID K block (1)
16:16	offensive rebound (5)			
16:16	1 GRAY R substitution out			
16:16	4 BARNES S substitution out			
16:16	5 KOPRIVICA B substitution out			
16:16	23 WALKER M substitution out			
16:16	0 EVANS R substitution in			
16:16	24 CALHOUN S substitution in			
16:16	31 WILKES W substitution in			
16:16	34 NGOM T substitution in			
16:16				14 REID K substitution out
16:16				23 SELDEN A substitution in
16:14	24 CALHOUN S 3pt FG second chance, jump shot missed			
16:14				23 SELDEN A defensive rebound (1)
16:12				1 CORNWALL J 3pt FG , jump shot missed
16:12	34 NGOM T defensive rebound (1)			
16:10	31 WILKES W turnover bad pass (1)			3 FALKO J steal (1)
16:00	2 POLITE A steal (1)			1 CORNWALL J turnover bad pass (1)
15:31	Timeout media			
15:31	2 POLITE A substitution out			
15:31	10 OSBORNE M substitution in			



Officials: Bill Covington, Raymie Styons, Tim Comer

Game Time	FSU	Score	Diff	GWU
15:31				00 TERRY L substitution out
15:31				1 CORNWALL J substitution out
15:31				4 WILLIAMS D substitution in
15:31				11 LYNOTT M substitution in
15:21	31 WILKES W 3pt FG from turnover, jump shot missed			
15:15	34 NGOM T offensive rebound (2)			
15:05	34 NGOM T foul offensive (1 - 1)			24 DUFEAL L foul drawn (1)
15:05	34 NGOM T turnover offensive (1)			
14:49	10 OSBORNE M foul shooting (1 - 2)			4 WILLIAMS D foul drawn (1)
14:49		5-4	1	4 WILLIAMS D free throw 1 - 2 made (1)
14:49				24 DUFEAL L substitution out
14:49				14 REID K substitution in
14:49				4 WILLIAMS D free throw 2 - 2 missed
14:48	34 NGOM T defensive rebound (3)			
14:40	34 NGOM T foul offensive (2 - 3)			14 REID K foul drawn (1)
14:40	34 NGOM T turnover offensive (2)			
14:32				4 WILLIAMS D 3pt FG from turnover, jump shot missed
14:27	34 NGOM T defensive rebound (4)			
14:21	31 WILKES W 3pt FG , jump shot missed			
14:16	10 OSBORNE M offensive rebound (1)			
14:08	34 NGOM T foul drawn (1)			11 LYNOTT M foul shooting (1 - 1)
14:08	34 NGOM T free throw 1 - 2 missed			
14:08	offensive dead ball rebound (1)			
14:08				3 FALCO J substitution out
14:08				1 CORNWALL J substitution in
14:08	34 NGOM T free throw 2 - 2 made (1)	6-4	2	
14:08	34 NGOM T substitution out			
14:08	11 JACK N substitution in			
13:50				23 SELDEN A 3pt FG , jump shot missed
13:47	24 CALHOUN S defensive rebound (1)			
13:43	11 JACK N 3pt FG , jump shot missed			
13:38	11 JACK N offensive rebound (1)			
13:28	31 WILKES W foul drawn (1)			14 REID K foul personal (1 - 2)
13:14	24 CALHOUN S 2pt FG second chance outside the paint, floating jump shot missed			
13:10	10 OSBORNE M offensive rebound (2)			
13:10	10 OSBORNE M turnover lost ball (1)			4 WILLIAMS D steal (1)
13:01		6-7	-1	23 SELDEN A 3pt FG from turnover, jump shot made (3)
13:01				11 LYNOTT M assist (1)
12:44	10 OSBORNE M 3pt FG , jump shot missed			
12:40				1 CORNWALL J defensive rebound (2)
12:23	24 CALHOUN S foul drawn (1)			14 REID K foul offensive (2 - 3)
12:23				14 REID K turnover offensive (1)
12:23	0 EVANS R substitution out			
12:23	10 OSBORNE M substitution out			
12:23	24 CALHOUN S substitution out			
12:23	31 WILKES W substitution out			
12:23	2 POLITE A substitution in			
12:23	4 BARNES S substitution in			



Official Basketball Play by Play - First Half
Gardner-Webb at Florida State
 12/21/20 Donald L. Tucker Center, Tallahassee
 2020-21 Men's Basketball

Game Time: 7:00 PM
Game Duration: 2:06
Attendance: 2,078

Officials: Bill Covington, Raymie Styons, Tim Comer

Game Time	FSU	Score	Diff	GWU
12:23	15 BALLARD Q substitution in			
12:23	23 WALKER M substitution in			
12:23				4 WILLIAMS D substitution out
12:23				14 REID K substitution out
12:23				23 SELDEN A substitution out
12:23				00 TERRY L substitution in
12:23				5 MANN J substitution in
12:23				24 DUFEAL L substitution in
12:07	23 WALKER M 2pt FG from turnover outside the paint, pull up jump shot missed			
12:02				24 DUFEAL L defensive rebound (1)
11:53	2 POLITE A foul shooting (1 - 4)			00 TERRY L foul drawn (1)
11:53	Timeout media			
11:53	2 POLITE A substitution out			
11:53	1 GRAY R substitution in			
11:53				11 LYNOTT M substitution out
11:53				2 SEARS J substitution in
11:53		6-8	-2	00 TERRY L free throw 1 - 2 made (4)
11:53		6-9	-3	00 TERRY L free throw 2 - 2 made (5)
11:44	23 WALKER M 3pt FG , jump shot missed			
11:40				00 TERRY L defensive rebound (1)
11:36		6-12	-6	00 TERRY L 3pt FG , jump shot made (8)
11:36				24 DUFEAL L assist (1)
11:13	11 JACK N 3pt FG , jump shot made (3)	9-12	-3	
11:13	4 BARNES S assist (1)			
11:00	15 BALLARD Q substitution out			
11:00	5 KOPRIVICA B substitution in			
10:57				1 CORNWALL J 3pt FG , jump shot missed
10:54	5 KOPRIVICA B defensive rebound (2)			
10:50	11 JACK N 3pt FG , jump shot missed			
10:49				defensive dead ball rebound (1)
10:49	5 KOPRIVICA B foul personal (1 - 5)			24 DUFEAL L foul drawn (2)
10:32				24 DUFEAL L 2pt FG in the paint, layup missed
10:28	1 GRAY R defensive rebound (2)			
10:24	4 BARNES S 3pt FG , jump shot missed			
10:20				5 MANN J defensive rebound (1)
10:03				2 SEARS J 2pt FG in the paint, driving layup missed
09:58	5 KOPRIVICA B defensive rebound (3)			
09:50	5 KOPRIVICA B foul drawn (1)			5 MANN J foul personal (1 - 4)
09:49	1 GRAY R 2pt FG in the paint, layup made (2)	11-12	-1	
09:49	4 BARNES S assist (2)			
09:26				00 TERRY L 3pt FG , jump shot missed
09:22	23 WALKER M defensive rebound (1)			
09:17	11 JACK N foul drawn (1)			1 CORNWALL J foul shooting (1 - 5)
09:17	11 JACK N free throw 1 - 3 made (4)	12-12	0	
09:17	11 JACK N free throw 2 - 3 missed			
09:17	offensive dead ball rebound (2)			
09:17	1 GRAY R substitution out			
09:17	4 BARNES S substitution out			



Officials: Bill Covington, Raymie Styons, Tim Comer

Game Time	FSU	Score	Diff	GWU
09:17	0 EVANS R substitution in			
09:17	31 WILKES W substitution in			
09:17				1 CORNWALL J substitution out
09:17				5 MANN J substitution out
09:17				3 FALKO J substitution in
09:17				23 SELDEN A substitution in
09:17	11 JACK N free throw 3 - 3 made (5)	13-12	1	
09:17	11 JACK N substitution out			
09:17	2 POLITE A substitution in			
09:10				3 FALKO J 3pt FG , jump shot missed
09:07	2 POLITE A defensive rebound (2)			
08:45	0 EVANS R 3pt FG , jump shot missed			
08:41	0 EVANS R offensive rebound (1)			
08:34	31 WILKES W 2pt FG second chance outside the paint, step back jump shot missed			
08:34	offensive dead ball rebound (3)			
08:34	5 KOPRIVICA B foul drawn (2)			00 TERRY L foul personal (1 - 6)
08:34				2 SEARS J substitution out
08:34				11 LYNOTT M substitution in
08:27	23 WALKER M 2pt FG second chance in the paint, layup made (2)	15-12	3	
08:08		15-15	0	00 TERRY L 3pt FG , jump shot made (11)
08:08				3 FALKO J assist (1)
07:50	2 POLITE A foul drawn (1)			24 DUFEAL L foul shooting (1 - 7)
07:50	Timeout media			
07:50	5 KOPRIVICA B substitution out			
07:50	10 OSBORNE M substitution in			
07:50				00 TERRY L substitution out
07:50				4 WILLIAMS D substitution in
07:50	2 POLITE A free throw 1 - 2 missed			
07:50	offensive dead ball rebound (4)			
07:50	2 POLITE A free throw 2 - 2 made (1)	16-15	1	
07:36	31 WILKES W foul personal (1 - 6)			24 DUFEAL L foul drawn (3)
07:33		16-18	-2	4 WILLIAMS D 3pt FG , jump shot made (4)
07:33				3 FALKO J assist (2)
07:20	23 WALKER M 3pt FG , jump shot missed			
07:16				24 DUFEAL L defensive rebound (2)
07:06				3 FALKO J turnover travel (1)
07:06				24 DUFEAL L substitution out
07:06				25 ITODO S substitution in
06:56	10 OSBORNE M foul offensive (2 - 7)			23 SELDEN A foul drawn (1)
06:56	10 OSBORNE M turnover offensive (2)			
06:56				11 LYNOTT M substitution out
06:56				1 CORNWALL J substitution in
06:41				23 SELDEN A 3pt FG from turnover, jump shot missed
06:41	defensive dead ball rebound (5)			
06:41	2 POLITE A foul drawn (2)			25 ITODO S foul personal (1 - 8)
06:41	10 OSBORNE M turnover (3)			
06:23				4 WILLIAMS D 3pt FG from turnover, jump shot missed
06:19	0 EVANS R defensive rebound (2)			



Officials: Bill Covington, Raymie Styons, Tim Comer

Game Time	FSU	Score	Diff	GWU
06:10	2 POLITE A 2pt FG in the paint, driving layup made (3)	18-18	0	
06:10	2 POLITE A foul drawn (3)			25 ITODO S foul shooting (2 - 9)
06:08	2 POLITE A free throw 1 - 1 made (4)	19-18	1	
06:08	0 EVANS R substitution out			
06:08	4 BARNES S substitution in			
06:08				25 ITODO S substitution out
06:08				24 DUFEAL L substitution in
05:57				24 DUFEAL L 2pt FG in the paint, jump shot missed
05:51	23 WALKER M defensive rebound (2)			
05:48	2 POLITE A 3pt FG , jump shot made (7)	22-18	4	
05:48	31 WILKES W assist (1)			
05:45				Timeout 30 Sec
05:45	31 WILKES W substitution out			
05:45	1 GRAY R substitution in			
05:27	23 WALKER M foul personal (1 - 8)			4 WILLIAMS D foul drawn (2)
05:27				4 WILLIAMS D 1&1 free throw 1 missed
05:27	10 OSBORNE M defensive rebound (3)			
05:21	23 WALKER M turnover bad pass (2)			23 SELDEN A steal (1)
05:11				1 CORNWALL J 3pt FG from turnover, jump shot missed
05:06				offensive rebound (10)
05:06				3 FALKO J substitution out
05:06				00 TERRY L substitution in
05:06	2 POLITE A substitution out			
05:06	24 CALHOUN S substitution in			
05:03				00 TERRY L 3pt FG from turnover second chance, jump shot blocked
05:03	10 OSBORNE M block (1)			
04:54				1 CORNWALL J offensive rebound (3)
04:55	4 BARNES S foul personal (1 - 9)			4 WILLIAMS D foul drawn (3)
04:55		22-19	3	4 WILLIAMS D 1&1 free throw 1 made (5)
04:55		22-20	2	4 WILLIAMS D 1&1 free throw 2 made (6)
04:44	10 OSBORNE M 2pt FG outside the paint, turnaround jump shot missed			
04:39	10 OSBORNE M offensive rebound (4)			
04:36	10 OSBORNE M turnover lost ball (4)			4 WILLIAMS D steal (2)
04:26		22-22	0	00 TERRY L 2pt FG from turnover in the paint, driving layup made (13)
04:07	24 CALHOUN S foul drawn (2)			24 DUFEAL L foul shooting (2 - 10)
04:07	24 CALHOUN S free throw 1 - 2 made (1)	23-22	1	
04:07	10 OSBORNE M substitution out			
04:07	5 KOPRIVICA B substitution in			
04:07				23 SELDEN A substitution out
04:07				24 DUFEAL L substitution out
04:07				5 MANN J substitution in
04:07				25 ITODO S substitution in
04:07	24 CALHOUN S free throw 2 - 2 made (2)	24-22	2	
04:07				1 CORNWALL J substitution out
04:07				2 SEARS J substitution in
03:51		24-24	0	5 MANN J 2pt FG outside the paint, jump shot made (2)
03:41	4 BARNES S foul drawn (1)			2 SEARS J foul personal (1 - 11)



Officials: Bill Covington, Raymie Styons, Tim Comer

Game Time	FSU	Score	Diff	GWU
03:41	Timeout media			
03:41	4 BARNES S free throw 1 - 2 made (4)	25-24	1	
03:41	4 BARNES S free throw 2 - 2 missed			
03:40				00 TERRY L defensive rebound (2)
03:26				4 WILLIAMS D 2pt FG outside the paint, hook shot missed
03:20				offensive rebound (13)
03:20				4 WILLIAMS D substitution out
03:20				3 FALKO J substitution in
03:19	1 GRAY R steal (1)			2 SEARS J turnover bad pass (1)
03:13	24 CALHOUN S 3pt FG from turnover, jump shot missed			
03:09				defensive rebound (14)
02:54				00 TERRY L 2pt FG outside the paint, jump shot missed
02:47	5 KOPRIVICA B defensive rebound (4)			
02:46	4 BARNES S turnover bad pass (1)			
02:40	23 WALKER M foul shooting (2 - 10)			5 MANN J foul drawn (1)
02:40				5 MANN J free throw fast break 1 - 2 missed
02:40				offensive dead ball rebound (2)
02:40	23 WALKER M substitution out			
02:40	2 POLITE A substitution in			
02:40				2 SEARS J substitution out
02:40				1 CORNWALL J substitution in
02:40				5 MANN J free throw fast break 2 - 2 missed
02:38	defensive rebound (25)			
02:38				5 MANN J substitution out
02:38				23 SELDEN A substitution in
02:26	5 KOPRIVICA B foul drawn (3)			25 ITODO S foul personal (3 - 12)
02:26	5 KOPRIVICA B free throw 1 - 2 made (3)	26-24	2	
02:26	24 CALHOUN S substitution out			
02:26	11 JACK N substitution in			
02:26				25 ITODO S substitution out
02:26				5 MANN J substitution in
02:26	5 KOPRIVICA B free throw 2 - 2 made (4)	27-24	3	
02:16	4 BARNES S foul personal (2 - 11)			00 TERRY L foul drawn (2)
02:16		27-25	2	00 TERRY L free throw 1 - 2 made (14)
02:16	4 BARNES S substitution out			
02:16	0 EVANS R substitution in			
02:16		27-26	1	00 TERRY L free throw 2 - 2 made (15)
01:58	2 POLITE A 3pt FG , jump shot missed			
01:53				3 FALKO J defensive rebound (1)
01:34	2 POLITE A steal (2)			00 TERRY L turnover lost ball (1)
01:29	2 POLITE A 2pt FG fast break from turnover in the paint, dunk, made (9)	29-26	3	
01:29	1 GRAY R assist (2)			
01:00				3 FALKO J 2pt FG in the paint, layup blocked
01:00	2 POLITE A block (1)			
00:53				3 FALKO J offensive rebound (2)
00:52				5 MANN J 2pt FG second chance in the paint, layup blocked
00:52	1 GRAY R block (1)			
00:46	2 POLITE A defensive rebound (3)			



Official Basketball Play by Play - First Half
Gardner-Webb at Florida State
 12/21/20 Donald L. Tucker Center, Tallahassee
 2020-21 Men's Basketball

Game Time: 7:00 PM
Game Duration: 2:06
Attendance: 2,078

Officials: Bill Covington, Raymie Styons, Tim Comer

Game Time	FSU	Score	Diff	GWU
00:44	11 JACK N 3pt FG , jump shot missed			
00:44	0 EVANS R offensive rebound (3)			
00:44	0 EVANS R foul drawn (1)			5 MANN J foul personal (2 - 13)
00:44	0 EVANS R free throw fast break 1 - 2 made (1)	30-26	4	
00:44	0 EVANS R free throw fast break 2 - 2 made (2)	31-26	5	
00:44	Timeout 30 Sec			
00:26				00 TERRY L 2pt FG in the paint, layup blocked
00:26	5 KOPRIVICA B block (1)			
00:16	1 GRAY R defensive rebound (3)			
00:04	11 JACK N 3pt FG , jump shot missed			
00:00				defensive dead ball rebound (3)
00:00	1 GRAY R foul personal (1 - 12)			1 CORNWALL J foul drawn (1)
00:00		31-27	4	1 CORNWALL J free throw 1 - 2 made (1)
00:00		31-28	3	1 CORNWALL J free throw 2 - 2 made (2)
END OF PERIOD				
FSU 31-28 GWU				



Officials: Bill Covington, Raymie Styons, Tim Comer

Gardner-Webb - 28

NO.	Name	Min	FG			Rebounds			Fouls		TP	AS	TO	ST	Blocks		+/-
			M-A	M-A	M-A	OR	DR	TOT	PF	FD					BS	BA	
14	Kareem Reid	F 06:10	0-0	0-0	0-0	1	1	2	2	1	0	0	1	0	1	0	0
24	Ludovic Dufeal	F 12:29	0-3	0-1	0-0	0	2	2	2	3	0	1	0	0	0	0	0
00	Lance Terry	G 14:08	4-10	3-7	4-4	0	2	2	1	2	15	0	1	0	0	2	-2
1	Jaheam Cornwall	G 14:49	0-4	0-4	2-2	1	2	3	1	1	2	0	1	0	0	0	-7
3	Jacob Falko	G 13:23	0-3	0-2	0-0	1	1	2	0	0	0	2	1	1	0	1	-7
23	Anthony Selden	11:41	1-3	1-3	0-0	0	1	1	0	1	3	0	0	1	0	0	0
4	D'Maurian Williams	07:38	1-4	1-3	3-5	0	0	0	0	3	6	0	0	2	0	0	2
11	Mick Lynott	05:16	0-0	0-0	0-0	0	0	0	1	0	0	1	0	0	0	0	6
5	Jamaine Mann	07:01	1-2	0-0	0-2	0	1	1	2	1	2	0	0	0	0	1	-2
2	Jordan Sears	04:46	0-1	0-0	0-0	0	0	0	1	0	0	0	1	0	0	0	-1
25	Sammy Itodo	02:39	0-0	0-0	0-0	0	0	0	3	0	0	0	0	0	0	0	-4
Team						2	1	3			0		0				
Totals			7-30	5-20	9-13	5	11	16	13	12	28	4	5	4	1	4	-3

Shooting By Period		
1st FG%	7-30	23.3%
3PT%	5-20	25.0%
FT%	9-13	69.2%
GM FG%	7-30	23.3%
3PT%	5-20	25.0%
FT%	9-13	69.2%

Dead Ball Rebounds: 1, 2

Technical Fouls::NONE

Florida State - 31

NO.	Name	Min	FG			Rebounds			Fouls		TP	AS	TO	ST	Blocks		+/-
			M-A	M-A	M-A	OR	DR	TOT	PF	FD					BS	BA	
1	RaiQuan Gray	F 12:05	1-2	0-1	0-0	0	3	3	1	0	2	2	0	1	1	0	2
5	Balsa Koprivica	C 11:01	1-2	0-0	2-2	0	4	4	1	3	4	0	0	0	1	1	7
2	Anthony Polite	G 11:50	3-5	1-3	2-3	0	3	3	1	3	9	0	0	2	1	0	7
4	Scottie Barnes	G 10:42	1-2	1-2	1-2	0	1	1	2	1	4	2	1	0	0	0	4
23	M.J. Walker	G 13:27	1-4	0-2	0-0	0	2	2	2	0	2	1	2	0	0	0	4
0	RayQuan Evans	09:18	0-1	0-1	2-2	2	1	3	0	1	2	0	0	0	0	0	-1
24	Sardar Calhoun	06:33	0-3	0-2	2-2	0	1	1	0	2	2	0	0	0	0	0	-5
31	Wyatt Wilkes	07:25	0-3	0-2	0-0	0	0	0	1	1	0	1	1	0	0	0	1
34	Tanor Ngom	02:08	0-0	0-0	1-2	1	3	4	2	1	1	0	2	0	0	0	0
10	Malik Osborne	06:51	0-2	0-1	0-0	3	1	4	2	0	0	0	4	0	1	0	-2
11	Nathanael Jack	07:17	1-5	1-5	2-3	1	0	1	0	1	5	0	0	0	0	0	0
15	Quincy Ballard	01:23	0-0	0-0	0-0	0	0	0	0	0	0	0	0	0	0	0	-2
Team						1	1	2			0		0				
Totals			8-29	3-19	12-16	8	20	28	12	13	31	6	10	3	4	1	3

Shooting By Period		
1st FG%	8-29	27.6%
3PT%	3-19	15.8%
FT%	12-16	75%
GM FG%	8-29	27.6%
3PT%	3-19	15.8%
FT%	12-16	75.0%

Dead Ball Rebounds: 4, 1

Technical Fouls::NONE

	GWU	FSU
Biggest lead	6 (1st 11:36)	5 (1st 0:44)
Best Scoring Run	8(1st 11:36)	9(1st 8:27)
Lead Changes	6	
Times Tied	5	
Time with Lead	05:49	13:02

Points from	GWU	FSU
Turnovers	8	2
Paint	2	10
Second Chance	5	5
Fast Breaks	0	7
Bench	11	10

	Period by Period Scoring		
	1st	2nd	TOT
GWU	28	31	59
FSU	31	41	72



Period 2

Quarter Starters:

FSU	1 Gray R	2 Polite A	4 Barnes S	5 Koprivica B	23 Walker M
GWU	00 Terry L	1 Cornwall J	3 Falko J	14 Reid K	24 Dufeal L

Game Time	FSU	Score	Diff	GWU
20:00	0 EVANS R substitution out			
20:00	11 JACK N substitution out			
20:00	4 BARNES S substitution in			
20:00	23 WALKER M substitution in			
20:00				5 MANN J substitution out
20:00				23 SELDEN A substitution out
20:00				14 REID K substitution in
20:00				24 DUFEAL L substitution in
19:45		31-30	1	00 TERRY L 2pt FG in the paint, layup made (17)
19:45				1 CORNWALL J assist (1)
19:29	5 KOPRIVICA B 2pt FG in the paint, alleyoop made (6)	33-30	3	
19:29	23 WALKER M assist (2)			
19:04		33-32	1	14 REID K 2pt FG in the paint, layup made (2)
19:04				00 TERRY L assist (1)
18:58	5 KOPRIVICA B 2pt FG fast break in the paint, dunk, made (8)	35-32	3	
18:58	4 BARNES S assist (3)			
18:34		35-34	1	00 TERRY L 2pt FG outside the paint, jump shot made (19)
18:31	4 BARNES S substitution out			
18:31	0 EVANS R substitution in			
18:17	1 GRAY R turnover lost ball (1)			
17:57		35-37	-2	24 DUFEAL L 3pt FG from turnover, jump shot made (3)
17:43	2 POLITE A foul drawn (4)			14 REID K foul personal (3 - 1)
17:38	1 GRAY R 3pt FG , jump shot missed			
17:34				24 DUFEAL L defensive rebound (3)
17:25				1 CORNWALL J turnover lost ball (2)
17:25				14 REID K substitution out
17:25				23 SELDEN A substitution in
17:17	23 WALKER M 3pt FG from turnover, jump shot missed			
17:15	5 KOPRIVICA B offensive rebound (5)			
17:13	5 KOPRIVICA B foul drawn (4)			23 SELDEN A foul shooting (1 - 2)
17:13	5 KOPRIVICA B free throw 1 - 2 made (9)	36-37	-1	
17:13	1 GRAY R substitution out			
17:13	31 WILKES W substitution in			
17:13				3 FALKO J substitution out
17:13				4 WILLIAMS D substitution in
17:13	5 KOPRIVICA B free throw 2 - 2 made (10)	37-37	0	
17:03				23 SELDEN A 2pt FG in the paint, layup missed
17:00	5 KOPRIVICA B defensive rebound (6)			
16:46	23 WALKER M foul drawn (1)			24 DUFEAL L foul shooting (3 - 3)
16:46	23 WALKER M free throw 1 - 2 made (3)	38-37	1	
16:46				24 DUFEAL L substitution out
16:46				25 ITODO S substitution in
16:46	23 WALKER M free throw 2 - 2 made (4)	39-37	2	



Official Basketball Play by Play - Second Half
Gardner-Webb at Florida State
 12/21/20 Donald L. Tucker Center, Tallahassee
 2020-21 Men's Basketball

Game Time: 7:00 PM
Game Duration: 2:06
Attendance: 2,078

Officials: Bill Covington, Raymie Styons, Tim Comer

Game Time	FSU	Score	Diff	GWU
16:36		39-39	0	00 TERRY L 2pt FG in the paint, driving layup made (21)
16:23	23 WALKER M foul drawn (2)			00 TERRY L foul personal (2 - 4)
16:13	23 WALKER M 3pt FG , jump shot made (7)	42-39	3	
16:13	2 POLITE A assist (1)			
15:55				23 SELDEN A 3pt FG , jump shot missed
15:51	2 POLITE A defensive rebound (4)			
15:44	23 WALKER M turnover lost ball (3)			4 WILLIAMS D steal (3)
15:44	Timeout media			
15:44				1 CORNWALL J substitution out
15:44				25 ITODO S substitution out
15:44				11 LYNOTT M substitution in
15:44				14 REID K substitution in
15:31	23 WALKER M foul personal (3 - 1)			4 WILLIAMS D foul drawn (4)
15:20				00 TERRY L 2pt FG from turnover outside the paint, pull up jump shot missed
15:16	2 POLITE A defensive rebound (5)			
15:13	23 WALKER M 3pt FG , jump shot missed			
15:06	offensive rebound (33)			
15:06	23 WALKER M substitution out			
15:06	24 CALHOUN S substitution in			
15:00	2 POLITE A 2pt FG second chance in the paint, dunk, made (11)	44-39	5	
14:30	2 POLITE A foul drawn (5)			23 SELDEN A foul offensive (2 - 5)
14:30				23 SELDEN A turnover offensive (1)
14:30	5 KOPRIVICA B substitution out			
14:30	10 OSBORNE M substitution in			
14:30				23 SELDEN A substitution out
14:30				5 MANN J substitution in
14:30				14 REID K substitution out
14:30				25 ITODO S substitution in
14:16	10 OSBORNE M 2pt FG from turnover in the paint, jump shot made (2)	46-39	7	
14:02				4 WILLIAMS D 3pt FG , jump shot missed
13:58	2 POLITE A defensive rebound (6)			
13:53	0 EVANS R 2pt FG in the paint, layup missed			
13:51	10 OSBORNE M offensive rebound (5)			
13:51	10 OSBORNE M 2pt FG second chance in the paint, layup made (4)	48-39	9	
13:49				Timeout 30 Sec
13:49	2 POLITE A substitution out			
13:49	11 JACK N substitution in			
13:49				00 TERRY L substitution out
13:49				4 WILLIAMS D substitution out
13:49				1 CORNWALL J substitution in
13:49				3 FALKO J substitution in
13:35				3 FALKO J 2pt FG outside the paint, floating jump shot missed
13:31	31 WILKES W defensive rebound (1)			
13:26	31 WILKES W turnover travel (2)			
13:13	11 JACK N foul personal (1 - 2)			1 CORNWALL J foul drawn (2)
13:09				3 FALKO J 2pt FG from turnover in the paint, layup blocked
13:09	31 WILKES W block (1)			



Official Basketball Play by Play - Second Half
Gardner-Webb at Florida State
 12/21/20 Donald L. Tucker Center, Tallahassee
 2020-21 Men's Basketball

Game Time: 7:00 PM
Game Duration: 2:06
Attendance: 2,078

Officials: Bill Covington, Raymie Styons, Tim Comer

Game Time	FSU	Score	Diff	GWU
13:07				25 ITODO S offensive rebound (1)
13:06		48-41	7	25 ITODO S 2pt FG from turnover second chance in the paint, layup made (2)
13:06	10 OSBORNE M foul shooting (3 - 3)			25 ITODO S foul drawn (1)
13:06		48-42	6	25 ITODO S free throw 1 - 1 made (3)
12:53	31 WILKES W 2pt FG outside the paint, jump shot missed			
12:50				11 LYNOTT M defensive rebound (1)
12:44		48-44	4	11 LYNOTT M 2pt FG in the paint, driving layup made (2)
12:24	10 OSBORNE M foul drawn (1)			11 LYNOTT M foul shooting (2 - 6)
12:24	10 OSBORNE M free throw 1 - 2 made (5)	49-44	5	
12:24	31 WILKES W substitution out			
12:24	1 GRAY R substitution in			
12:24	10 OSBORNE M free throw 2 - 2 made (6)	50-44	6	
12:06				25 ITODO S 2pt FG outside the paint, jump shot missed
12:03	0 EVANS R defensive rebound (4)			
11:58	10 OSBORNE M 3pt FG , jump shot missed			
11:55				3 FALKO J defensive rebound (3)
11:44		50-47	3	1 CORNWALL J 3pt FG , jump shot made (5)
11:44				11 LYNOTT M assist (2)
11:24	10 OSBORNE M foul drawn (2)			5 MANN J foul personal (3 - 7)
11:24	Timeout media			
11:24	24 CALHOUN S substitution out			
11:24	2 POLITE A substitution in			
11:24				25 ITODO S substitution out
11:24				24 DUFEAL L substitution in
11:24	10 OSBORNE M 1&1 free throw 1 missed			
11:23				3 FALKO J defensive rebound (4)
11:02				5 MANN J 3pt FG , jump shot missed
10:57	1 GRAY R defensive rebound (4)			
10:31	0 EVANS R 3pt FG , jump shot blocked			
10:31				3 FALKO J block (1)
10:25	2 POLITE A offensive rebound (7)			
10:24	2 POLITE A 2pt FG second chance outside the paint, jump shot missed			
10:21	10 OSBORNE M offensive rebound (6)			
10:20	10 OSBORNE M 2pt FG second chance outside the paint, turnaround jump shot missed			
10:15				3 FALKO J defensive rebound (5)
10:09	0 EVANS R steal (1)			5 MANN J turnover lost ball (1)
10:09	0 EVANS R foul drawn (2)			5 MANN J foul personal (4 - 8)
10:09				11 LYNOTT M substitution out
10:09				2 SEARS J substitution in
10:09				24 DUFEAL L substitution out
10:09				23 SELDEN A substitution in
10:09	0 EVANS R 1&1 free throw 1 missed			
10:09				23 SELDEN A defensive rebound (2)
10:09	0 EVANS R substitution out			
10:09	11 JACK N substitution out			
10:09	4 BARNES S substitution in			
10:09	23 WALKER M substitution in			



Official Basketball Play by Play - Second Half
Gardner-Webb at Florida State
 12/21/20 Donald L. Tucker Center, Tallahassee
 2020-21 Men's Basketball

Game Time: 7:00 PM
Game Duration: 2:06
Attendance: 2,078

Officials: Bill Covington, Raymie Styons, Tim Comer

Game Time	FSU	Score	Diff	GWU
10:09				3 FALKO J substitution out
10:09				5 MANN J substitution out
10:09				00 TERRY L substitution in
10:09				14 REID K substitution in
10:09	2 POLITE A foul personal (2 - 4)			23 SELDEN A foul drawn (2)
10:07				1 CORNWALL J 3pt FG , jump shot missed
10:03	1 GRAY R defensive rebound (5)			
10:00	4 BARNES S 3pt FG , jump shot missed			
09:52	4 BARNES S offensive rebound (2)			
09:52	4 BARNES S 2pt FG second chance in the paint, dunk, missed			
09:51				1 CORNWALL J defensive rebound (4)
09:51				1 CORNWALL J turnover travel (3)
09:20	23 WALKER M 3pt FG from turnover, jump shot missed			
09:11	10 OSBORNE M offensive rebound (7)			
09:11	10 OSBORNE M 2pt FG from turnover second chance in the paint, dunk, made (8)	52-47	5	
08:41		52-50	2	2 SEARS J 3pt FG , jump shot made (3)
08:41				1 CORNWALL J assist (2)
08:28	4 BARNES S 2pt FG in the paint, jump shot missed			
08:24				2 SEARS J defensive rebound (1)
08:17				00 TERRY L 3pt FG , jump shot missed
08:13	2 POLITE A defensive rebound (8)			
07:59	1 GRAY R 3pt FG , jump shot missed			
07:56				1 CORNWALL J defensive rebound (5)
07:51				00 TERRY L 2pt FG in the paint, layup blocked
07:51	1 GRAY R block (2)			
07:51				offensive rebound (27)
07:51	Timeout media			
07:42				00 TERRY L turnover bad pass (2)
07:20	1 GRAY R foul drawn (1)			1 CORNWALL J foul personal (2 - 9)
07:20				1 CORNWALL J substitution out
07:20				3 FALKO J substitution in
07:20	1 GRAY R 1&1 free throw 1 made (3)	53-50	3	
07:20	1 GRAY R 1&1 free throw 2 made (4)	54-50	4	
07:20	1 GRAY R substitution out			
07:20	5 KOPRIVICA B substitution in			
07:07		54-53	1	23 SELDEN A 3pt FG , jump shot made (6)
07:07				00 TERRY L assist (2)
06:55	2 POLITE A foul drawn (6)			14 REID K foul personal (4 - 10)
06:55	2 POLITE A free throw 1 - 2 missed			
06:55	offensive dead ball rebound (6)			
06:55				14 REID K substitution out
06:55				24 DUFEAL L substitution in
06:55	2 POLITE A free throw 2 - 2 made (12)	55-53	2	
06:53	4 BARNES S steal (1)			23 SELDEN A turnover bad pass (2)
06:49	23 WALKER M foul offensive (4 - 5)			23 SELDEN A foul drawn (3)
06:49	23 WALKER M turnover offensive (4)			
06:36				2 SEARS J 2pt FG from turnover in the paint, layup blocked
06:36	4 BARNES S block (1)			



Official Basketball Play by Play - Second Half
Gardner-Webb at Florida State
 12/21/20 Donald L. Tucker Center, Tallahassee
 2020-21 Men's Basketball

Game Time: 7:00 PM
Game Duration: 2:06
Attendance: 2,078

Officials: Bill Covington, Raymie Styons, Tim Comer

Game Time	FSU	Score	Diff	GWU
06:31	10 OSBORNE M defensive rebound (8)			
06:29	2 POLITE A foul drawn (7)			24 DUFEAL L foul shooting (4 - 11)
06:29	2 POLITE A free throw fast break 1 - 2 made (13)	56-53	3	
06:29	23 WALKER M substitution out			
06:29	0 EVANS R substitution in			
06:29				2 SEARS J substitution out
06:29				1 CORNWALL J substitution in
06:29	2 POLITE A free throw fast break 2 - 2 missed			
06:28				23 SELDEN A defensive rebound (3)
06:26	4 BARNES S steal (2)			23 SELDEN A turnover bad pass (3)
06:21	4 BARNES S 2pt FG from turnover outside the paint, jump shot missed			
06:16	2 POLITE A offensive rebound (9)			
06:16	2 POLITE A 2pt FG from turnover second chance in the paint, dunk, made (15)	58-53	5	
06:05				3 FALKO J 3pt FG , jump shot missed
06:01	5 KOPRIVICA B defensive rebound (7)			
05:44	0 EVANS R 2pt FG in the paint, jump shot missed			
05:39				1 CORNWALL J defensive rebound (6)
05:30	10 OSBORNE M foul personal (4 - 6)			00 TERRY L foul drawn (3)
05:30	10 OSBORNE M substitution out			
05:30	1 GRAY R substitution in			
05:16		58-55	3	00 TERRY L 2pt FG in the paint, turnaround jump shot made (23)
05:16				3 FALKO J assist (3)
04:50	0 EVANS R 3pt FG , jump shot made (5)	61-55	6	
04:50	4 BARNES S assist (4)			
04:30	1 GRAY R foul shooting (2 - 7)			3 FALKO J foul drawn (1)
04:30		61-56	5	3 FALKO J free throw 1 - 2 made (1)
04:30				23 SELDEN A substitution out
04:30				24 DUFEAL L substitution out
04:30				5 MANN J substitution in
04:30				14 REID K substitution in
04:30		61-57	4	3 FALKO J free throw 2 - 2 made (2)
04:20	5 KOPRIVICA B 2pt FG in the paint, alleyoop made (12)	63-57	6	
04:20	4 BARNES S assist (5)			
03:54				1 CORNWALL J 3pt FG , step back jump shot missed
03:54	defensive rebound (48)			
03:54	Timeout media			
03:54	2 POLITE A substitution out			
03:54	23 WALKER M substitution in			
03:29	23 WALKER M 3pt FG , jump shot missed			
03:25	5 KOPRIVICA B offensive rebound (8)			
03:25	5 KOPRIVICA B foul drawn (5)			3 FALKO J foul personal (1 - 12)
03:25	5 KOPRIVICA B free throw 1 - 2 made (13)	64-57	7	
03:25				5 MANN J substitution out
03:25				23 SELDEN A substitution in
03:25	5 KOPRIVICA B free throw 2 - 2 made (14)	65-57	8	
03:14				23 SELDEN A turnover out of bounds (4)
03:14				23 SELDEN A substitution out



Official Basketball Play by Play - Second Half
Gardner-Webb at Florida State
 12/21/20 Donald L. Tucker Center, Tallahassee
 2020-21 Men's Basketball

Game Time: 7:00 PM
Game Duration: 2:06
Attendance: 2,078

Officials: Bill Covington, Raymie Styons, Tim Comer

Game Time	FSU	Score	Diff	GWU
03:14				5 MANN J substitution in
02:56	23 WALKER M turnover lost ball (5)			5 MANN J steal (1)
02:51	23 WALKER M substitution out			
02:51	2 POLITE A substitution in			
02:42	5 KOPRIVICA B foul shooting (2 - 8)			1 CORNWALL J foul drawn (3)
02:42		65-58	7	1 CORNWALL J free throw 1 - 2 made (6)
02:42				14 REID K substitution out
02:42				24 DUFEAL L substitution in
02:42		65-59	6	1 CORNWALL J free throw 2 - 2 made (7)
02:17	0 EVANS R 3pt FG , jump shot made (8)	68-59	9	
02:01				00 TERRY L 3pt FG , jump shot missed
01:57	1 GRAY R defensive rebound (6)			
01:36	4 BARNES S 2pt FG outside the paint, jump shot made (6)	70-59	11	
01:25				00 TERRY L 2pt FG in the paint, layup blocked
01:25	5 KOPRIVICA B block (2)			
01:17	1 GRAY R defensive rebound (7)			
01:15	4 BARNES S turnover lost ball (2)			
01:15	5 KOPRIVICA B substitution out			
01:15	10 OSBORNE M substitution in			
01:15				5 MANN J substitution out
01:15				4 WILLIAMS D substitution in
01:05				3 FALKO J 3pt FG from turnover, jump shot missed
01:02	1 GRAY R defensive rebound (8)			
00:39	1 GRAY R 3pt FG , jump shot missed			
00:35				1 CORNWALL J defensive rebound (7)
00:30				1 CORNWALL J turnover bad pass (4)
00:30	0 EVANS R substitution out			
00:30	1 GRAY R substitution out			
00:30	2 POLITE A substitution out			
00:30	4 BARNES S substitution out			
00:30	10 OSBORNE M substitution out			
00:30	12 LINDNER J substitution in			
00:30	15 BALLARD Q substitution in			
00:30	20 LIGHT T substitution in			
00:30	30 PRIETO H substitution in			
00:30	33 MILES W substitution in			
00:17	20 LIGHT T 3pt FG from turnover, jump shot missed			
00:13	20 LIGHT T offensive rebound (1)			
00:04	12 LINDNER J 2pt FG from turnover second chance in the paint, floating jump shot made (2)	72-59	13	
END OF GAME				
FSU 72-59 GWU				



Officials: Bill Covington, Raymie Styons, Tim Comer

Gardner-Webb - 31

NO.	Name	Min	FG		3P	FT		Rebounds			Fouls		TP	AS	TO	ST	Blocks		+/-	
			M-A	M-A	M-A	OR	DR	TOT	PF	FD	BS	BA								
14	Kareem Reid	F 08:51	1-1	0-0	0-0	0	0	0	2	0	2	0	0	0	0	0	0	0	0	3
24	Ludovic Duféal	F 09:36	1-1	1-1	0-0	0	1	1	2	0	3	0	0	0	0	0	0	0	0	-8
00	Lance Terry	G 16:20	4-9	0-2	0-0	0	0	0	1	1	8	2	1	0	0	2	0	0	-16	
1	Jaheam Cornwall	G 17:14	1-3	1-3	2-2	0	4	4	1	2	5	2	3	0	0	0	0	0	-3	
3	Jacob Falko	G 13:47	0-4	0-2	2-2	0	3	3	1	1	2	1	0	0	0	1	1	0	-1	
23	Anthony Selden	08:45	1-3	1-2	0-0	0	2	2	2	2	3	0	4	0	0	0	0	0	-10	
4	D'Maurian Williams	04:39	0-1	0-1	0-0	0	0	0	0	1	0	0	0	0	1	0	0	0	-12	
25	Sammy Itodo	04:08	1-2	0-0	1-1	1	0	1	0	1	3	0	0	0	0	0	0	0	0	
11	Mick Lynott	05:35	1-1	0-0	0-0	0	1	1	1	0	2	1	0	0	0	0	0	0	0	
5	Jamaine Mann	07:25	0-1	0-1	0-0	0	0	0	2	0	0	0	1	1	0	0	0	0	-3	
2	Jordan Sears	03:40	1-2	1-1	0-0	0	1	1	0	0	3	0	0	0	0	0	1	0	0	
Team								1	0	1			0	0						
Totals			11-28	4-13	5-5	2	12	14	12	8	31	6	9	2	1	4			-10	

Shooting By Period		
2 nd FG%	11-28	39.3%
3PT%	4-13	30.8%
FT%	5-5	100%
GM FG%	11-28	39.3%
3PT%	4-13	30.8%
FT%	5-5	100.0%

Dead Ball Rebounds: 0, 0

Technical Fouls::NONE

Florida State - 41

NO.	Name	Min	FG		3P	FT		Rebounds			Fouls		TP	AS	TO	ST	Blocks		+/-
			M-A	M-A	M-A	OR	DR	TOT	PF	FD	BS	BA							
1	RaiQuan Gray	F 12:50	0-3	0-3	2-2	0	5	5	1	1	2	0	1	0	1	0	1	0	1
5	Balsa Koprivica	C 11:35	3-3	0-0	4-4	2	2	4	1	2	10	0	0	0	1	0	9		
2	Anthony Polite	G 16:01	2-3	0-0	2-4	2	4	6	1	4	6	1	0	0	0	0	12		
4	Scottie Barnes	G 11:07	1-5	0-1	0-0	1	0	1	0	0	2	3	1	2	1	0	6		
23	M.J. Walker	G 09:37	1-5	1-5	2-2	0	0	0	2	2	5	1	3	0	0	0	2		
0	RayQuan Evans	14:20	2-5	2-3	0-1	0	1	1	0	1	6	0	0	1	0	1	10		
31	Wyatt Wilkes	04:49	0-1	0-0	0-0	0	1	1	0	0	0	0	1	0	1	0	6		
24	Sardar Calhoun	03:42	0-0	0-0	0-0	0	0	0	0	0	0	0	0	0	0	0	0		
10	Malik Osborne	09:44	3-5	0-1	2-3	3	1	4	2	2	8	0	0	0	0	0	0		
11	Nathanael Jack	03:40	0-0	0-0	0-0	0	0	0	1	0	0	0	0	0	0	0	-6		
12	Justin Lindner	00:31	1-1	0-0	0-0	0	0	0	0	0	2	0	0	0	0	0	2		
15	Quincy Ballard	00:31	0-0	0-0	0-0	0	0	0	0	0	0	0	0	0	0	0	2		
20	Travis Light	00:31	0-1	0-1	0-0	1	0	1	0	0	0	0	0	0	0	0	2		
30	Harrison Prieto	00:31	0-0	0-0	0-0	0	0	0	0	0	0	0	0	0	0	0	2		
33	Will Miles	00:31	0-0	0-0	0-0	0	0	0	0	0	0	0	0	0	0	0	2		
Team								1	1	2			0	0					
Totals			13-32	3-14	12-16	10	15	25	8	12	41	5	6	3	4	1	10		

Shooting By Period		
2 nd FG%	13-32	40.6%
3PT%	3-14	21.4%
FT%	12-16	75%
GM FG%	13-32	40.6%
3PT%	3-14	21.4%
FT%	12-16	75.0%

Dead Ball Rebounds: 1, 0

Technical Fouls::NONE

	GWU	FSU
Biggest lead	2 (2 nd 17:57)	13 (2 nd 0:04)
Best Scoring Run	5 (2 nd 17:57)	9 (2 nd 13:51)
Lead Changes	2	
Times Tied	2	
Time with Lead	00:44	18:11

Points from	GWU	FSU
Turnovers	8	12
Paint	12	18
Second Chance	3	14
Fast Breaks	0	3
Bench	11	16

	Period by Period Scoring		
	1st	2nd	TOT
GWU	28	31	59
FSU	31	41	72



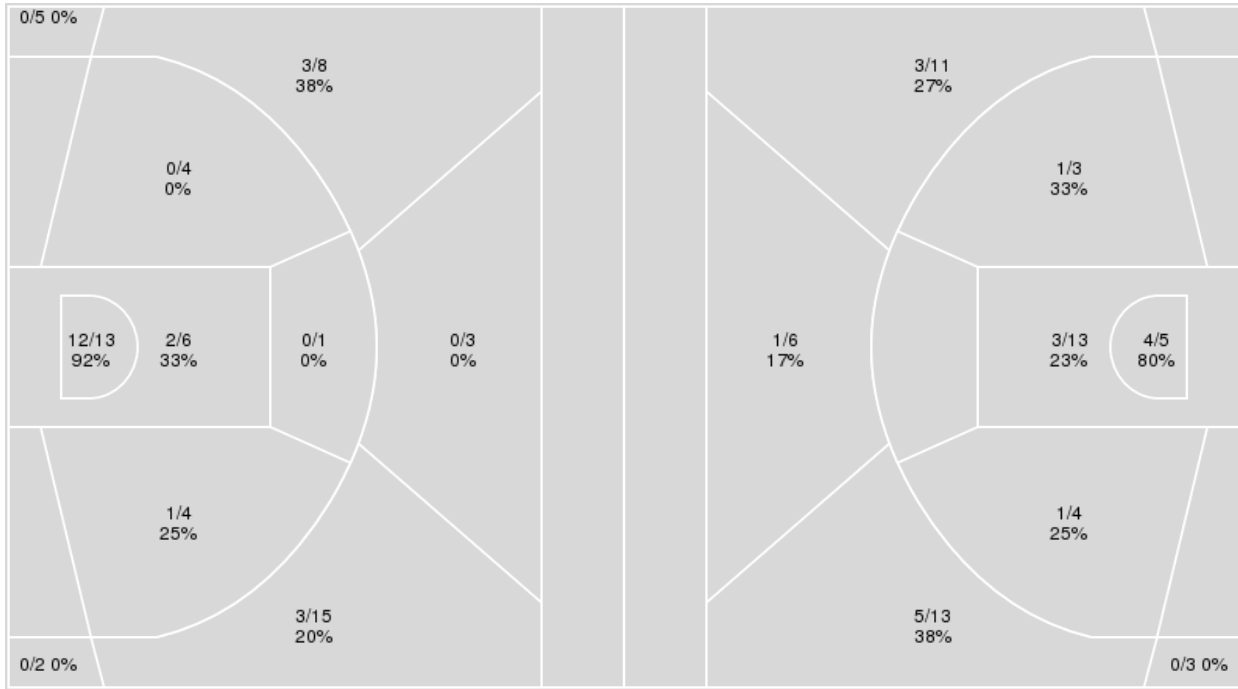
Officials: Bill Covington, Raymie Styons, Tim Comer

{ Players => All; } FG Types => All; Results => All;

{ Players => 00, 1, 2, 3, 4, 5, 11, 14, 23, 23, 24, 25, 32, 21; } FG Types
 => All; Results => All;

Florida State

Gardner-Webb



Florida State	M/A	%
Field Goals	21/61	34
2 Points	15/28	54
3 Points	6/33	18
Free Throws	24/32	75

Gardner-Webb	M/A	%
Field Goals	18/58	31
2 Points	9/25	36
3 Points	9/33	27
Free Throws	14/18	78



Gardner-Webb at Florida State

12/21/20 Donald L. Tucker Center, Tallahassee
2020-21 Men's Basketball

Game Time: 7:00 PM
Game Duration: 2:06
Attendance: 2,078

Officials: Bill Covington, Raymie Styons, Tim Comer

Gardner-Webb

No	Name	Mins		Score		Points Diff		Points per Min		Assists		Rebounds		Steals		Turnovers	
		On	Off	On	Off	On	Off	On	Off	On	Off	On	Off	On	Off	On	Off
00	Lance Terry	30:28	09:32	44 - 62	15 - 10	-18	5	1.44	1.57	7	3	21	9	4	2	11	3
1	Jaheam Cornwall	32:03	07:57	47 - 57	12 - 15	-10	-3	1.47	1.51	7	3	26	4	6	0	10	4
2	Jordan Sears	08:26	31:34	13 - 14	46 - 58	-1	-12	1.54	1.46	3	7	10	20	0	6	4	10
3	Jacob Falko	27:10	12:50	40 - 48	19 - 24	-8	-5	1.47	1.48	7	3	19	11	3	3	10	4
4	D'Maurian Williams	12:17	27:43	15 - 25	44 - 47	-10	-3	1.22	1.59	2	8	7	23	4	2	4	10
5	Jamaine Mann	14:26	25:34	22 - 27	37 - 45	-5	-8	1.52	1.45	2	8	14	16	1	5	3	11
11	Mick Lynott	10:51	29:09	18 - 12	41 - 60	6	-19	1.66	1.41	4	6	8	22	1	5	4	10
14	Kareem Reid	15:01	24:59	23 - 20	36 - 52	3	-16	1.53	1.44	5	5	9	21	2	4	6	8
23	Anthony Selden	20:26	19:34	29 - 39	30 - 33	-10	-3	1.42	1.53	6	4	14	16	5	1	10	4
24	Ludovic Duféal	22:05	17:55	32 - 40	27 - 32	-8	-5	1.45	1.51	6	4	16	14	3	3	7	7
25	Sammy Itodo	06:47	33:13	12 - 16	47 - 56	-4	-9	1.77	1.41	1	9	6	24	1	5	1	13

Florida State

No	Name	Mins		Score		Points Diff		Points per Min		Assists		Rebounds		Steals		Turnovers	
		On	Off	On	Off	On	Off	On	Off	On	Off	On	Off	On	Off	On	Off
0	RayQuan Evans	23:38	16:22	41 - 32	31 - 27	9	4	1.73	1.89	4	7	33	20	4	2	11	5
1	RaiQuan Gray	24:55	15:05	42 - 39	30 - 20	3	10	1.69	1.99	9	2	30	23	3	3	7	9
2	Anthony Polite	27:51	12:09	55 - 36	17 - 23	19	-6	1.97	1.40	9	2	36	17	5	1	9	7
4	Scottie Barnes	21:49	18:11	43 - 33	29 - 26	10	3	1.97	1.59	9	2	26	27	3	3	7	9
5	Balsa Koprivica	22:36	17:24	48 - 32	24 - 27	16	-3	2.12	1.38	9	2	28	25	4	2	7	9
10	Malik Osborne	16:35	23:25	23 - 25	49 - 34	-2	15	1.39	2.09	1	10	26	27	3	3	9	7
11	Nathanael Jack	10:57	29:03	14 - 20	58 - 39	-6	19	1.28	2.00	3	8	15	38	2	4	2	14
12	Justin Lindner	00:31	39:29	2 - 0	70 - 59	2	11	3.87	1.77	0	11	1	52	0	6	0	16
15	Quincy Ballard	01:54	38:06	5 - 5	67 - 54	0	13	2.63	1.76	1	10	1	52	0	6	0	16
20	Travis Light	00:31	39:29	2 - 0	70 - 59	2	11	3.87	1.77	0	11	1	52	0	6	0	16
23	M.J. Walker	23:04	16:56	43 - 37	29 - 22	6	7	1.86	1.71	8	3	27	26	2	4	10	6
24	Sardaar Calhoun	10:15	29:45	13 - 18	59 - 41	-5	18	1.27	1.98	0	11	15	38	2	4	7	9
30	Harrison Prieto	00:31	39:29	2 - 0	70 - 59	2	11	3.87	1.77	0	11	1	52	0	6	0	16
31	Wyatt Wilkes	12:14	27:46	24 - 17	48 - 42	7	6	1.96	1.73	2	9	19	34	1	5	8	8
33	Will Miles	00:31	39:29	2 - 0	70 - 59	2	11	3.87	1.77	0	11	1	52	0	6	0	16
34	Tanor Ngom	02:08	37:52	1 - 1	71 - 58	0	13	0.47	1.88	0	11	5	48	1	5	3	13

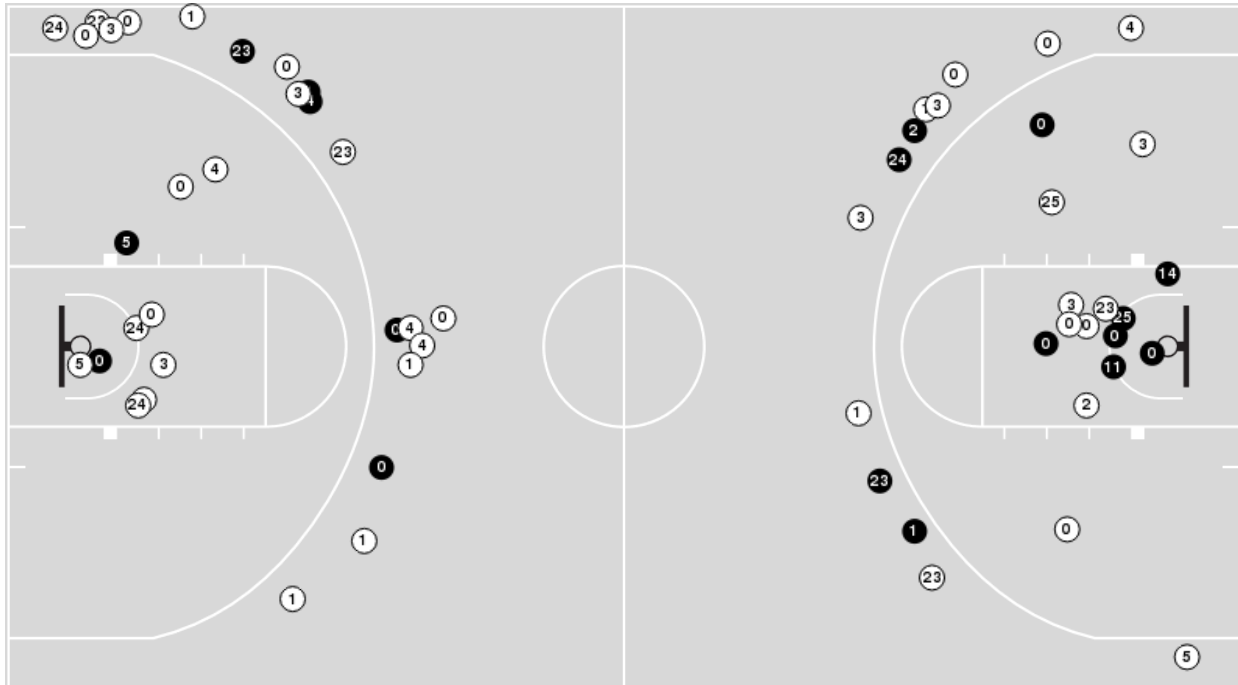


Officials: Bill Covington, Raymie Styons, Tim Comer

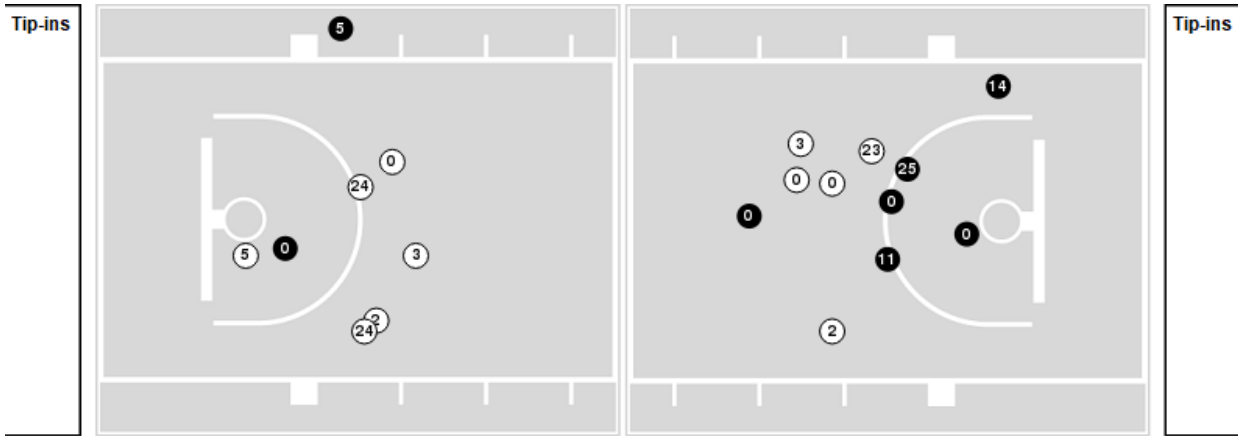
Players => 00, 1, 2, 3, 4, 5, 11, 14, 23, 23, 24, 25, 32, 21 FG Types=>All Results=>All

Gardner-Webb

All Field Goals



Blow Up Chart



● Made ○ Missed N - Player Number

Gardner-Webb	M/A	%
Field Goals	18/58	31
2 Points	9/25	36
3 Points	9/33	27
Free Throws	14/18	78

Gardner-Webb	M/A	%
Points in the Paint	14 (7 / 18)	39
Fast Break Points	0 (0/2)	0
Second Chance Points	8 (5/7)	71
Effective FG%	39	

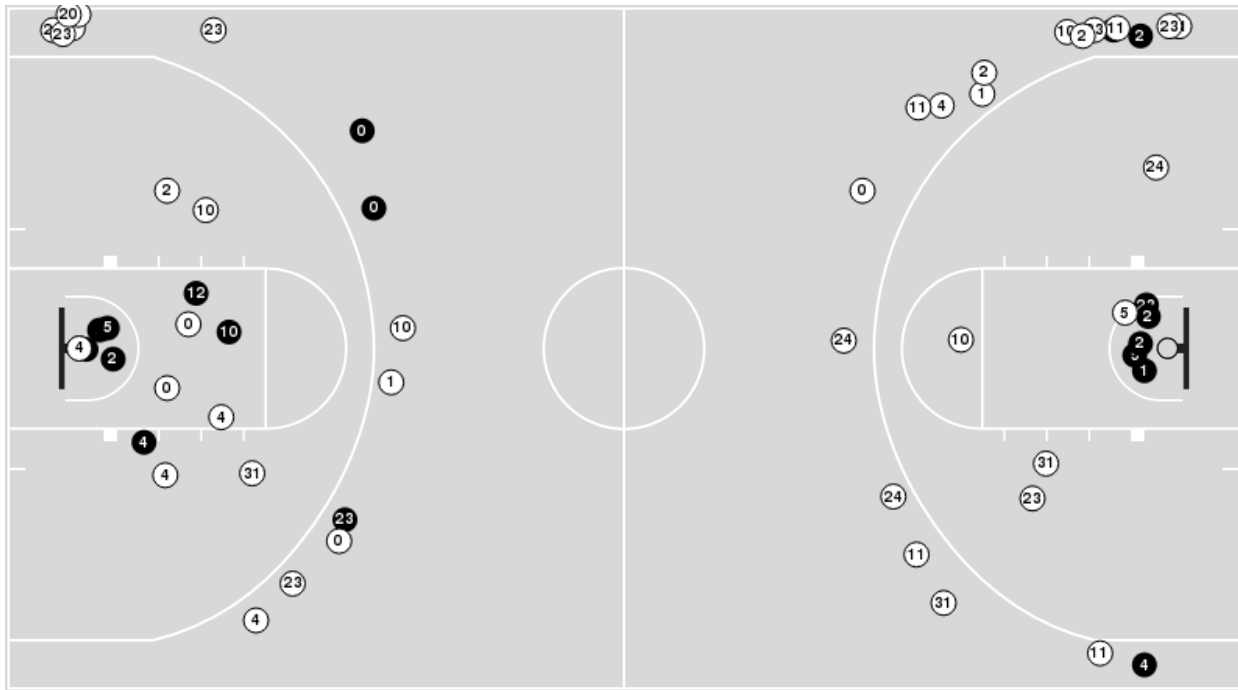


Officials: Bill Covington, Raymie Styons, Tim Comer

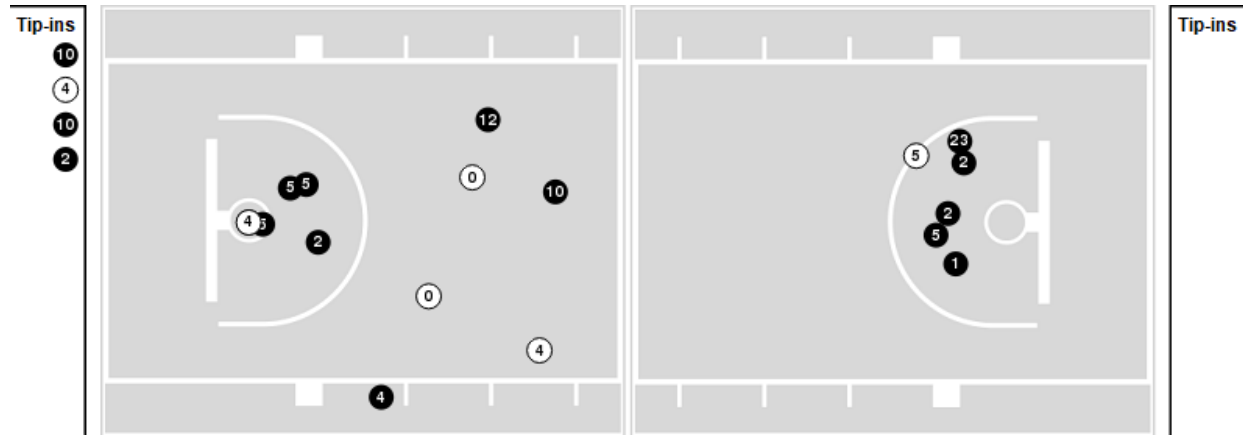
Players => AllFG Types=>AllResults=>All

Florida State

All Field Goals



Blow Up Chart



● Made ○ Missed N - Player Number

Florida State	M/A	%
Field Goals	21/61	34
2 Points	15/28	54
3 Points	6/33	18
Free Throws	24/32	75

Florida State	M/A	%
Points in the Paint	28 (14 / 19)	74
Fast Break Points	10 (6/7)	86
Second Chance Points	19 (13/20)	65
Effective FG%	39	



Officials: Bill Covington, Raymie Styons, Tim Comer

Gardner-Webb

Lineup	Quarter On	Time On	Quarter Off	Time Off	Time on Court	Score	Score Diff	Reb	Stl	Tov	Ass	PPP
00- Terry L/ 1- Cornwall J/3- Falko J/ 14- Reid K/ 24- Duféal L/	1	20:00	1	16:16	03:44	3-5	-2	3	0	0	0	0.6000
00- Terry L/ 1- Cornwall J/3- Falko J/ 23- Selden A/ 24- Duféal L/	1	16:16	1	15:31	00:45	0-0	0	1	1	1	0	0.0000
3- Falko J/ 4- Williams D/ 11- Lynott M/ 23- Selden A/ 24- Duféal L/	1	15:31	1	14:49	00:42	1-0	1	0	0	0	0	2.2727
3- Falko J/ 4- Williams D/ 11- Lynott M/ 14- Reid K/ 23- Selden A/	1	14:49	1	14:08	00:41	0-0	0	0	0	0	0	0.0000
1- Cornwall J/ 4- Williams D/ 11- Lynott M/ 14- Reid K/ 23- Selden A/	1	14:08	1	12:23	01:45	3-1	2	1	1	1	1	1.0000
00- Terry L/ 1- Cornwall J/ 5- Mann J/ 11- Lynott M/ 24- Duféal L/	1	12:23	1	11:53	00:30	0-0	0	1	0	0	0	0.0000
00- Terry L/ 1- Cornwall J/ 2- Sears J/ 5- Mann J/ 24- Duféal L/	1	11:53	1	09:17	02:36	5-6	-1	2	0	0	1	0.8503
00- Terry L/ 2- Sears J/ 3- Falko J/ 23- Selden A/ 24- Duféal L/	1	09:17	1	08:34	00:43	0-1	-1	0	0	0	0	0.0000
00- Terry L/ 3- Falko J/ 11- Lynott M/ 23- Selden A/ 24- Duféal L/	1	08:34	1	07:50	00:44	3-2	1	0	0	0	1	3.0000
3- Falko J/ 4- Williams D/ 11- Lynott M/ 23- Selden A/ 24- Duféal L/	1	07:50	1	07:06	00:44	3-1	2	1	0	1	1	1.5000
3- Falko J/ 4- Williams D/ 11- Lynott M/ 23- Selden A/ 25- Itodo S/	1	07:06	1	06:56	00:10	0-0	0	0	0	0	0	0.0000
1- Cornwall J/ 3- Falko J/ 4- Williams D/ 23- Selden A/ 25- Itodo S/	1	06:56	1	06:08	00:48	0-3	-3	0	0	0	0	0.0000
1- Cornwall J/ 3- Falko J/ 4- Williams D/ 23- Selden A/ 24- Duféal L/	1	06:08	1	05:06	01:02	0-3	-3	1	1	0	0	0.0000
00- Terry L/ 1- Cornwall J/ 4- Williams D/ 23- Selden A/ 24- Duféal L/	1	05:06	1	04:07	00:59	4-1	3	1	1	0	0	2.1277
00- Terry L/ 1- Cornwall J/ 4- Williams D/ 5- Mann J/ 25- Itodo S/	1	04:07	1	04:07	00:00	0-1	-1	0	0	0	0	0.0000
00- Terry L/ 2- Sears J/ 4- Williams D/ 5- Mann J/ 25- Itodo S/	1	04:07	1	03:20	00:47	2-1	1	2	0	0	0	2.0000
00- Terry L/ 2- Sears J/ 3- Falko J/ 5- Mann J/ 25- Itodo S/	1	03:20	1	02:40	00:40	0-0	0	1	0	1	0	0.0000
00- Terry L/ 1- Cornwall J/ 3- Falko J/ 5- Mann J/ 25- Itodo S/	1	02:40	1	02:38	00:02	0-0	0	0	0	0	0	0.0000
00- Terry L/ 1- Cornwall J/ 3- Falko J/ 23- Selden A/ 25- Itodo S/	1	02:38	1	02:26	00:12	0-1	-1	0	0	0	0	0.0000
00- Terry L/ 1- Cornwall J/ 3- Falko J/ 5- Mann J/ 23- Selden A/	1	02:26	2	20:00	02:26	4-5	-1	2	0	1	0	0.8403
00- Terry L/ 1- Cornwall J/ 3- Falko J/ 14- Reid K/ 24- Duféal L/	2	20:00	2	17:25	02:35	9-4	5	1	0	1	2	1.8000
00- Terry L/ 1- Cornwall J/ 3- Falko J/ 23- Selden A/ 24- Duféal L/	2	17:25	2	17:13	00:12	0-1	-1	0	0	0	0	0.0000
00- Terry L/ 1- Cornwall J/ 4- Williams D/ 23- Selden A/ 24- Duféal L/	2	17:13	2	16:46	00:27	0-2	-2	0	0	0	0	0.0000
00- Terry L/ 1- Cornwall J/ 4- Williams D/ 23- Selden A/ 25- Itodo S/	2	16:46	2	15:44	01:02	2-4	-2	0	1	0	0	1.0000
00- Terry L/ 4- Williams D/ 11- Lynott M/ 14- Reid K/ 23- Selden A/	2	15:44	2	14:30	01:14	0-2	-2	0	0	1	0	0.0000
00- Terry L/ 4- Williams D/ 5- Mann J/ 11- Lynott M/ 14- Reid K/	2	14:30	2	14:30	00:00	0-0	0	0	0	0	0	0.0000
00- Terry L/ 4- Williams D/ 5- Mann J/ 11- Lynott M/ 25- Itodo S/	2	14:30	2	13:49	00:41	0-4	-4	0	0	0	0	0.0000
1- Cornwall J/ 3- Falko J/ 5- Mann J/ 11- Lynott M/ 25- Itodo S/	2	13:49	2	11:24	02:25	8-2	6	3	0	0	1	1.4706
1- Cornwall J/ 3- Falko J/ 5- Mann J/ 11- Lynott M/ 24- Duféal L/	2	11:24	2	10:09	01:15	0-0	0	2	0	1	0	0.0000
1- Cornwall J/ 2- Sears J/ 3- Falko J/ 5- Mann J/ 23- Selden A/	2	10:09	2	10:09	00:00	0-0	0	1	0	0	0	0.0000
00- Terry L/ 1- Cornwall J/ 2- Sears J/ 14- Reid K/ 23- Selden A/	2	10:09	2	07:20	02:49	3-2	1	4	0	2	1	0.6000
00- Terry L/ 2- Sears J/ 3- Falko J/ 14- Reid K/ 23- Selden A/	2	07:20	2	06:55	00:25	3-2	1	0	0	0	1	3.0000
00- Terry L/ 2- Sears J/ 3- Falko J/ 23- Selden A/ 24- Duféal L/	2	06:55	2	06:29	00:26	0-2	-2	0	0	1	0	0.0000
00- Terry L/ 1- Cornwall J/ 3- Falko J/ 23- Selden A/ 24- Duféal L/	2	06:29	2	04:30	01:59	3-5	-2	2	0	1	1	0.8721
00- Terry L/ 1- Cornwall J/ 3- Falko J/ 5- Mann J/ 14- Reid K/	2	04:30	2	03:25	01:05	1-3	-2	0	0	0	0	0.6944
00- Terry L/ 1- Cornwall J/ 3- Falko J/ 14- Reid K/ 23- Selden A/	2	03:25	2	03:14	00:11	0-1	-1	0	0	1	0	0.0000
00- Terry L/ 1- Cornwall J/ 3- Falko J/ 5- Mann J/ 14- Reid K/	2	03:14	2	02:42	00:32	1-0	1	0	1	0	0	2.2727
00- Terry L/ 1- Cornwall J/ 3- Falko J/ 5- Mann J/ 24- Duféal L/	2	02:42	2	01:15	01:27	1-5	-4	0	0	0	0	0.4098
00- Terry L/ 1- Cornwall J/ 3- Falko J/ 4- Williams D/ 24- Duféal L/	2	01:15	2	00:00	01:15	0-2	-2	1	0	1	0	0.0000



Officials: Bill Covington, Raymie Styons, Tim Comer

Florida State

Lineup	Quarter On	Time On	Quarter Off	Time Off	Time on Court	Score	Score Diff	Reb	Stl	Tov	Ass	PPP
1- Gray R/ 2- Polite A/ 4- Barnes S/ 5- Koprivica B/ 23- Walker M/	1	20:00	1	16:16	03:44	5-3	2	5	0	1	2	1.0000
0- Evans R/ 2- Polite A/ 24- Calhoun S/ 31- Wilkes W/ 34- Ngom T/	1	16:16	1	15:31	00:45	0-0	0	1	1	1	0	0.0000
0- Evans R/ 10- Osborne M/ 24- Calhoun S/ 31- Wilkes W/ 34- Ngom T/	1	15:31	1	14:08	01:23	1-1	0	4	0	2	0	0.3472
0- Evans R/ 10- Osborne M/ 11- Jack N/ 24- Calhoun S/ 31- Wilkes W/	1	14:08	1	12:23	01:45	0-3	-3	3	0	1	0	0.0000
2- Polite A/ 4- Barnes S/ 11- Jack N/ 15- Ballard Q/ 23- Walker M/	1	12:23	1	11:53	00:30	0-0	0	0	0	0	0	0.0000
1- Gray R/ 4- Barnes S/ 11- Jack N/ 15- Ballard Q/ 23- Walker M/	1	11:53	1	11:00	00:53	3-5	-2	0	0	0	1	1.5000
1- Gray R/ 4- Barnes S/ 5- Koprivica B/ 11- Jack N/ 23- Walker M/	1	11:00	1	09:17	01:43	3-0	3	4	0	0	1	0.7732
0- Evans R/ 5- Koprivica B/ 11- Jack N/ 23- Walker M/ 31- Wilkes W/	1	09:17	1	09:17	00:00	1-0	1	0	0	0	0	2.2727
0- Evans R/ 2- Polite A/ 5- Koprivica B/ 23- Walker M/ 31- Wilkes W/	1	09:17	1	07:50	01:27	2-3	-1	2	0	0	0	1.0000
0- Evans R/ 2- Polite A/ 10- Osborne M/ 23- Walker M/ 31- Wilkes W/	1	07:50	1	06:08	01:42	4-3	1	1	0	2	0	0.7519
2- Polite A/ 4- Barnes S/ 10- Osborne M/ 23- Walker M/ 31- Wilkes W/	1	06:08	1	05:45	00:23	3-0	3	1	0	0	1	3.0000
1- Gray R/ 2- Polite A/ 4- Barnes S/ 10- Osborne M/ 23- Walker M/	1	05:45	1	05:06	00:39	0-0	0	1	0	1	0	0.0000
1- Gray R/ 4- Barnes S/ 10- Osborne M/ 23- Walker M/ 24- Calhoun S/	1	05:06	1	04:07	00:59	1-4	-3	1	0	1	0	0.6944
1- Gray R/ 4- Barnes S/ 5- Koprivica B/ 23- Walker M/ 24- Calhoun S/	1	04:07	1	02:40	01:27	2-2	0	1	1	1	0	0.6024
1- Gray R/ 2- Polite A/ 4- Barnes S/ 5- Koprivica B/ 24- Calhoun S/	1	02:40	1	02:26	00:14	1-0	1	1	0	0	0	2.2727
1- Gray R/ 2- Polite A/ 4- Barnes S/ 5- Koprivica B/ 11- Jack N/	1	02:26	1	02:16	00:10	1-1	0	0	0	0	0	2.2727
0- Evans R/ 1- Gray R/ 2- Polite A/ 5- Koprivica B/ 11- Jack N/	1	02:16	2	20:00	02:16	4-3	1	3	1	0	1	1.0309
1- Gray R/ 2- Polite A/ 4- Barnes S/ 5- Koprivica B/ 23- Walker M/	2	20:00	2	18:31	01:29	4-6	-2	0	0	0	2	2.0000
0- Evans R/ 1- Gray R/ 2- Polite A/ 5- Koprivica B/ 23- Walker M/	2	18:31	2	17:13	01:18	1-3	-2	1	0	1	0	0.4098
0- Evans R/ 2- Polite A/ 5- Koprivica B/ 23- Walker M/ 31- Wilkes W/	2	17:13	2	15:06	02:07	6-2	4	4	0	1	1	1.8072
0- Evans R/ 2- Polite A/ 5- Koprivica B/ 24- Calhoun S/ 31- Wilkes W/	2	15:06	2	14:30	00:36	2-0	2	0	0	0	0	2.0000
0- Evans R/ 2- Polite A/ 10- Osborne M/ 24- Calhoun S/ 31- Wilkes W/	2	14:30	2	13:49	00:41	4-0	4	2	0	0	0	2.0000
0- Evans R/ 10- Osborne M/ 11- Jack N/ 24- Calhoun S/ 31- Wilkes W/	2	13:49	2	12:24	01:25	1-5	-4	1	0	1	0	0.4098
0- Evans R/ 1- Gray R/ 10- Osborne M/ 11- Jack N/ 24- Calhoun S/	2	12:24	2	11:24	01:00	1-3	-2	1	0	0	0	0.6944
0- Evans R/ 1- Gray R/ 2- Polite A/ 10- Osborne M/ 11- Jack N/	2	11:24	2	10:09	01:15	0-0	0	3	1	0	0	0.0000
1- Gray R/ 2- Polite A/ 4- Barnes S/ 10- Osborne M/ 23- Walker M/	2	10:09	2	07:20	02:49	4-3	1	4	0	0	0	0.8197
2- Polite A/ 4- Barnes S/ 5- Koprivica B/ 10- Osborne M/ 23- Walker M/	2	07:20	2	06:29	00:51	2-3	-1	1	1	1	0	0.8621
0- Evans R/ 2- Polite A/ 4- Barnes S/ 5- Koprivica B/ 10- Osborne M/	2	06:29	2	05:30	00:59	2-0	2	2	1	0	0	0.8197
0- Evans R/ 1- Gray R/ 2- Polite A/ 4- Barnes S/ 5- Koprivica B/	2	05:30	2	03:54	01:36	5-4	1	1	0	0	2	2.5000
0- Evans R/ 1- Gray R/ 4- Barnes S/ 5- Koprivica B/ 23- Walker M/	2	03:54	2	02:51	01:03	2-0	2	1	0	1	0	1.0638
0- Evans R/ 1- Gray R/ 2- Polite A/ 4- Barnes S/ 5- Koprivica B/	2	02:51	2	01:15	01:36	5-2	3	2	0	1	0	1.6667
0- Evans R/ 1- Gray R/ 2- Polite A/ 4- Barnes S/ 10- Osborne M/	2	01:15	2	00:30	00:44	0-0	0	1	0	0	0	0.0000
12- Lindner J/ 15- Ballard Q/ 20- Light T/ 30- Prieto H/ 33- Miles W/	2	00:30	2	00:00	00:31	2-0	2	1	0	0	0	2.0000



Officials: Bill Covington, Raymie Styons, Tim Comer

Gardner-Webb

Lineup	Time	Score	Score Diff	Pts/Min	Reb	Stl	Tov	Ass	PPP
00- Terry L/ 1- Cornwall J/ 3- Falko J/ 14- Reid K/ 24- Dufeal L/	06:19	12-9	3	1.8997	4	0	1	2	1.2000
00- Terry L/ 1- Cornwall J/ 3- Falko J/ 23- Selden A/ 24- Dufeal L/	02:56	3-6	-3	1.0227	3	1	2	1	0.5515
00- Terry L/ 1- Cornwall J/ 2- Sears J/ 14- Reid K/ 23- Selden A/	02:49	3-2	1	1.0651	4	0	2	1	0.6000
00- Terry L/ 1- Cornwall J/ 2- Sears J/ 5- Mann J/ 24- Dufeal L/	02:36	5-6	-1	1.9231	2	0	0	1	0.8503
00- Terry L/ 1- Cornwall J/ 3- Falko J/ 5- Mann J/ 23- Selden A/	02:26	4-5	-1	1.6438	2	0	1	0	0.8403
1- Cornwall J/ 3- Falko J/ 5- Mann J/ 11- Lynott M/ 25- Itodo S/	02:25	8-2	6	3.3103	3	0	0	1	1.4706
1- Cornwall J/ 4- Williams D/ 11- Lynott M/ 14- Reid K/ 23- Selden A/	01:45	3-1	2	1.7143	1	1	1	1	1.0000
00- Terry L/ 1- Cornwall J/ 3- Falko J/ 5- Mann J/ 14- Reid K/	01:37	2-3	-1	1.2371	0	1	0	0	1.0638
00- Terry L/ 1- Cornwall J/ 3- Falko J/ 5- Mann J/ 24- Dufeal L/	01:27	1-5	-4	0.6897	0	0	0	0	0.4098
3- Falko J/ 4- Williams D/ 11- Lynott M/ 23- Selden A/ 24- Dufeal L/	01:26	4-1	3	2.7907	1	0	1	1	1.6393
00- Terry L/ 1- Cornwall J/ 4- Williams D/ 23- Selden A/ 24- Dufeal L/	01:26	4-3	1	2.7907	1	1	0	0	1.3889
1- Cornwall J/ 3- Falko J/ 5- Mann J/ 11- Lynott M/ 24- Dufeal L/	01:15	0-0	0	0.0000	2	0	1	0	0.0000
00- Terry L/ 1- Cornwall J/ 3- Falko J/ 4- Williams D/ 24- Dufeal L/	01:15	0-2	-2	0.0000	1	0	1	0	0.0000
00- Terry L/ 4- Williams D/ 11- Lynott M/ 14- Reid K/ 23- Selden A/	01:14	0-2	-2	0.0000	0	0	1	0	0.0000
00- Terry L/ 2- Sears J/ 3- Falko J/ 23- Selden A/ 24- Dufeal L/	01:09	0-3	-3	0.0000	0	0	1	0	0.0000
1- Cornwall J/ 3- Falko J/ 4- Williams D/ 23- Selden A/ 24- Dufeal L/	01:02	0-3	-3	0.0000	1	1	0	0	0.0000
00- Terry L/ 1- Cornwall J/ 4- Williams D/ 23- Selden A/ 25- Itodo S/	01:02	2-4	-2	1.9355	0	1	0	0	1.0000
1- Cornwall J/ 3- Falko J/ 4- Williams D/ 23- Selden A/ 25- Itodo S/	00:48	0-3	-3	0.0000	0	0	0	0	0.0000
00- Terry L/ 2- Sears J/ 4- Williams D/ 5- Mann J/ 25- Itodo S/	00:47	2-1	1	2.5532	2	0	0	0	2.0000
00- Terry L/ 3- Falko J/ 11- Lynott M/ 23- Selden A/ 24- Dufeal L/	00:44	3-2	1	4.0909	0	0	0	1	3.0000
3- Falko J/ 4- Williams D/ 11- Lynott M/ 14- Reid K/ 23- Selden A/	00:41	0-0	0	0.0000	0	0	0	0	0.0000
00- Terry L/ 4- Williams D/ 5- Mann J/ 11- Lynott M/ 25- Itodo S/	00:41	0-4	-4	0.0000	0	0	0	0	0.0000
00- Terry L/ 2- Sears J/ 3- Falko J/ 5- Mann J/ 25- Itodo S/	00:40	0-0	0	0.0000	1	0	1	0	0.0000
00- Terry L/ 1- Cornwall J/ 5- Mann J/ 11- Lynott M/ 24- Dufeal L/	00:30	0-0	0	0.0000	1	0	0	0	0.0000
00- Terry L/ 2- Sears J/ 3- Falko J/ 14- Reid K/ 23- Selden A/	00:25	3-2	1	7.2000	0	0	0	1	3.0000
00- Terry L/ 1- Cornwall J/ 3- Falko J/ 23- Selden A/ 25- Itodo S/	00:12	0-1	-1	0.0000	0	0	0	0	0.0000
00- Terry L/ 1- Cornwall J/ 3- Falko J/ 14- Reid K/ 23- Selden A/	00:11	0-1	-1	0.0000	0	0	1	0	0.0000
3- Falko J/ 4- Williams D/ 11- Lynott M/ 23- Selden A/ 25- Itodo S/	00:10	0-0	0	0.0000	0	0	0	0	0.0000
00- Terry L/ 1- Cornwall J/ 3- Falko J/ 5- Mann J/ 25- Itodo S/	00:02	0-0	0	0.0000	0	0	0	0	0.0000
00- Terry L/ 1- Cornwall J/ 4- Williams D/ 5- Mann J/ 25- Itodo S/	00:00	0-1	-1	NaN	0	0	0	0	0.0000
00- Terry L/ 4- Williams D/ 5- Mann J/ 11- Lynott M/ 14- Reid K/	00:00	0-0	0	NaN	0	0	0	0	0.0000
1- Cornwall J/ 2- Sears J/ 3- Falko J/ 5- Mann J/ 23- Selden A/	00:00	0-0	0	NaN	1	0	0	0	0.0000



Officials: Bill Covington, Raymie Styons, Tim Comer

Florida State

Lineup	Time	Score	Score Diff	Pts/Min	Reb	Stl	Tov	Ass	PPP
1- Gray R/ 2- Polite A/ 4- Barnes S/ 5- Koprivica B/ 23- Walker M/	05:13	9-9	0	1.7252	5	0	1	4	1.2857
0- Evans R/ 2- Polite A/ 5- Koprivica B/ 23- Walker M/ 31- Wilkes W/	03:34	8-5	3	2.2430	6	0	1	1	1.5038
1- Gray R/ 2- Polite A/ 4- Barnes S/ 10- Osborne M/ 23- Walker M/	03:28	4-3	1	1.1538	5	0	1	0	0.6803
0- Evans R/ 1- Gray R/ 2- Polite A/ 4- Barnes S/ 5- Koprivica B/	03:12	10-6	4	3.1250	3	0	1	2	2.0000
0- Evans R/ 10- Osborne M/ 11- Jack N/ 24- Calhoun S/ 31- Wilkes W/	03:10	1-8	-7	0.3158	4	0	2	0	0.2252
0- Evans R/ 1- Gray R/ 2- Polite A/ 5- Koprivica B/ 11- Jack N/	02:16	4-3	1	1.7647	3	1	0	1	1.0309
1- Gray R/ 4- Barnes S/ 5- Koprivica B/ 11- Jack N/ 23- Walker M/	01:43	3-0	3	1.7476	4	0	0	1	0.7732
0- Evans R/ 2- Polite A/ 10- Osborne M/ 23- Walker M/ 31- Wilkes W/	01:42	4-3	1	2.3529	1	0	2	0	0.7519
1- Gray R/ 4- Barnes S/ 5- Koprivica B/ 23- Walker M/ 24- Calhoun S/	01:27	2-2	0	1.3793	1	1	1	0	0.6024
0- Evans R/ 10- Osborne M/ 24- Calhoun S/ 31- Wilkes W/ 34- Ngom T/	01:23	1-1	0	0.7229	4	0	2	0	0.3472
0- Evans R/ 1- Gray R/ 2- Polite A/ 5- Koprivica B/ 23- Walker M/	01:18	1-3	-2	0.7692	1	0	1	0	0.4098
0- Evans R/ 1- Gray R/ 2- Polite A/ 10- Osborne M/ 11- Jack N/	01:15	0-0	0	0.0000	3	1	0	0	0.0000
0- Evans R/ 1- Gray R/ 4- Barnes S/ 5- Koprivica B/ 23- Walker M/	01:03	2-0	2	1.9048	1	0	1	0	1.0638
0- Evans R/ 1- Gray R/ 10- Osborne M/ 11- Jack N/ 24- Calhoun S/	01:00	1-3	-2	1.0000	1	0	0	0	0.6944
1- Gray R/ 4- Barnes S/ 10- Osborne M/ 23- Walker M/ 24- Calhoun S/	00:59	1-4	-3	1.0169	1	0	1	0	0.6944
0- Evans R/ 2- Polite A/ 4- Barnes S/ 5- Koprivica B/ 10- Osborne M/	00:59	2-0	2	2.0339	2	1	0	0	0.8197
1- Gray R/ 4- Barnes S/ 11- Jack N/ 15- Ballard Q/ 23- Walker M/	00:53	3-5	-2	3.3962	0	0	0	1	1.5000
2- Polite A/ 4- Barnes S/ 5- Koprivica B/ 10- Osborne M/ 23- Walker M/	00:51	2-3	-1	2.3529	1	1	1	0	0.8621
0- Evans R/ 2- Polite A/ 24- Calhoun S/ 31- Wilkes W/ 34- Ngom T/	00:45	0-0	0	0.0000	1	1	1	0	0.0000
0- Evans R/ 1- Gray R/ 2- Polite A/ 4- Barnes S/ 10- Osborne M/	00:44	0-0	0	0.0000	1	0	0	0	0.0000
0- Evans R/ 2- Polite A/ 10- Osborne M/ 24- Calhoun S/ 31- Wilkes W/	00:41	4-0	4	5.8537	2	0	0	0	2.0000
0- Evans R/ 2- Polite A/ 5- Koprivica B/ 24- Calhoun S/ 31- Wilkes W/	00:36	2-0	2	3.3333	0	0	0	0	2.0000
12- Lindner J/ 15- Ballard Q/ 20- Light T/ 30- Prieto H/ 33- Miles W/	00:31	2-0	2	3.8710	1	0	0	0	2.0000
2- Polite A/ 4- Barnes S/ 11- Jack N/ 15- Ballard Q/ 23- Walker M/	00:30	0-0	0	0.0000	0	0	0	0	0.0000
2- Polite A/ 4- Barnes S/ 10- Osborne M/ 23- Walker M/ 31- Wilkes W/	00:23	3-0	3	7.8261	1	0	0	1	3.0000
1- Gray R/ 2- Polite A/ 4- Barnes S/ 5- Koprivica B/ 24- Calhoun S/	00:14	1-0	1	4.2857	1	0	0	0	2.2727
1- Gray R/ 2- Polite A/ 4- Barnes S/ 5- Koprivica B/ 11- Jack N/	00:10	1-1	0	6.0000	0	0	0	0	2.2727
0- Evans R/ 5- Koprivica B/ 11- Jack N/ 23- Walker M/ 31- Wilkes W/	00:00	1-0	1	∞	0	0	0	0	2.2727