

TWO THOUSAND AND EIGHTEEN

FLORIDA STATE

BEACH VOLLEYBALL

2018 SEASON

Overall Record	33-6
Home Record	7-0
Away Record	2-2
Neutral Record	23-4
CCSA Record	10-0

2018 SCHEDULE

FEBRUARY

23	FAU* ¹	4/16	W, 5-0
23	South Carolina* ¹	4/8	W, 4-1
24	Georgia State* ¹	4/12	W, 4-1
24	Stetson ¹	4/15	W, 4-1

MARCH

2	St. Petersburg College ²	4/-	W, 5-0
2	St. Petersburg College ²	4/-	W, 4-0
3	College of Charleston* ²	4/-	W, 5-0
3	Stetson ²	4/15	W, 4-1
10	Pepperdine ³	5/1	L, 1-4
10	Hawaii ³	5/3	W, 4-1
11	UCLA ³	5/4	L, 2-3
11	USC ³	5/2	L, 2-3
14	at Pepperdine	4/1	L, 1-4
15	at Loyola Marymount	4/16	W, 5-0
15	at Long Beach State	4/8	L, 1-4
17	Houston Baptist ⁴	4/RV	W, 4-1
17	Jacksonville ⁴	4/-	W, 5-0
30	UCLA ⁵	7/2	L, 1-4
30	TCU ⁵	7/RV	W, 4-1
31	Tulane* ⁵	7/RV	W, 5-0
31	FIU* ⁵	7/12	W, 5-0
31	Grand Canyon ⁵	7/11	W, 4-1

APRIL

6	FAU* ⁶	7/-	W, 5-0
6	UNC Wilmington* ⁶	7/-	W, 5-0
6	TCU ⁶	7/-	W, 5-0
7	UAB* ⁶	7/-	Canceled
7	Georgia State* ⁶	7/-	Canceled
14	Georgia State* ⁷	7/11	W, 5-0
14	Houston Baptist ⁷	7/-	W, 5-0
14	New Orleans ⁷	7/-	W, 5-0
15	LSU* ⁷	7/8	W, 3-2
15	Jacksonville State ⁷	7/-	W, 5-0
20	UNC Wilmington* ⁸	7/-	W, 5-0
20	FAU* ⁸	7/-	W, 5-0
21	LSU* ⁸	7/8	W, 4-1
21	Georgia State* ⁸	7/11	W, 5-0
22	FIU - Semifinals ⁸	7/10	W, 5-0
22	LSU - Finals ⁸	7/8	W, 3-0

MAY

4	USC ⁹	#4/#5	W, 4-1
4	UCLA ⁹	#4/#1	W, 4-1
5	Hawaii ⁹	#4/#3	W, 3-2
6	Hawaii/UCLA ⁹	#4/#3/1	1:00 pm

* Conference Opponent

- 1 Stetson Spring Fling (DeLand, Fla.)
- 2 FSU Invitational (Tallahassee, Fla.)
- 3 East Meets West Challenge (Manhattan Beach, Calif.)
- 4 Hickory Point Lake Bash (Tavares, Fla.)
- 5 FIU's Surf N Turf Invitational (Miami, Fla.)
- 6 Seminole Beach Battle (Tallahassee, Fla.)
- 7 LSU's Battle on the Bayou (Baton Rouge, La.)
- 8 CCSA Championship (Emerson, Ga.)
- 9 NCAA Championship (Gulf Shores, Ala.)

NCAA BEACH VOLLEYBALL CHAMPIONSHIP

May 4-6 • Gulf Shores, Ala. • Gulf Place

CHAMPIONSHIP

Sunday, May 6 • 1:00 pm CT (2 pm EST)



HAWAII RAINBOW WAHINE

37-4 Overall
Head Coach: Jeff Hall (fourth season)
All-time series record: FSU leads 7-4

OR



UCLA BRUINS

38-4 Overall
Head Coach: Stein Metzger (sixth season)
All-time series record: FSU leads 7-4

- » The Seminoles are still undefeated in the NCAA Championship, taking down two-time defending champ USC and No. 1 overall UCLA on the first day, and downing No. 3 Hawaii in the semifinal.
- » The Women of Troy had gone undefeated in the NCAA Championship over the last two years, posting an 8-0 record before falling to FSU on Friday morning.
- » By defeating UCLA and Hawaii, the Seminoles snapped each team's 30+ win streaks.
- » As a No. 4 seed, FSU is now the lowest-seeded team to defeated to No. 1 seeded program in the NCAA Championships. In 2016, No. 1 Florida State lost to No. 2 USC twice, and No. 1 USC stayed undefeated in 2017.
- » With a 33-6 record, the team set the program record for most wins in a season. The record was previously set in 2016 when head coach Brooke Niles led the team to a 32-3 season in her first year at the helm.
- » The Seminoles head into the NCAA Championship final on a 21-match win streak.
- » Florida State is one of just two programs in the nation (along with Pepperdine) to have played in every AVCA Championship (2012-15) and NCAA Championship (2016-18).
- » Florida State is undefeated in conference play (both in the regular season and the postseason championship) since joining the CCSA in 2016. The team has not lost to an East Coast team since head coach Brooke Niles took the helm the same year.
- » FSU saw seven opponents ranked in the Top-10 this season, while 18 of the team's matches took place against teams ranked in the Top-15. The team posted sweeps in 20 matches and was never swept this season.
- » FSU holds a 159-33 (.828) all-time record.

MEDIA INFORMATION

Beach Volleyball SID	Kelsey Bibik
Phone	850.644.5656
Cell	850.228.7630
Fax	850.644.3820
E-mail	kbibik@fsu.edu
Website	Seminole.com
Mailing Address	403 Stadium Dr., Tallahassee, Fla. 32306

QUICK FACTS

UNIVERSITY INFORMATION

Location..... Tallahassee, FL
 Symbol..... Seminoles
 Colors..... Garnet and Gold
 Enrollment..... 40,830
 President..... John Thrasher
 Vice President / Athletic Director..... Stan Wilcox
 Sr. Assoc. AD (Senior Woman's Admin.)..... Vanessa Fuchs
 Conference..... Coastal Collegiate Sports Association
 National Affiliation (Division)..... Division I

BEACH VOLLEYBALL INFORMATION

Head Coach..... Brooke Niles (Third Season)
 Alma Mater..... UC Santa Barbara (2003)
 Record at Florida State..... 94-18
 Career Coaching Record..... 94-18
 Assistant Coach..... Raul Papaleo (Second Season)
 Volunteer Coach..... Angela Rock (First Season)
 Beach VB Office Phone Number..... 850.644.3003
 Home Courts/Capacity..... Seminole Beach Volleyball Courts/150
 2017 Overall Record..... 29-9
 2017 NCAA Championships (Gulf Shores, Ala.)..... 2-2 - 4th
 Letterwinners Returning/Lost..... 14/3
 Newcomers..... 7
 All-Time School Record (Yrs/Pct.)..... 159-33 (6/.828)
 All-Time NCAA Record (Yrs/Pct.)..... 94-18 (3/.839)

SID INFORMATION

Beach Volleyball SID..... Kelsey Bibik
 Phone Number..... 850.644.5656
 Fax Number..... 850.644.3820
 Cell Phone..... 850.288.7630
 Email Address..... kbibik@fsu.edu
 Mailing Address..... Florida State University
 403 Stadium Drive West, Room D0107
 Tallahassee, FL 32306
 Athletic Website..... www.seminoles.com
 Beach Volleyball Twitter..... @FSU_BeachVB
 Facebook Address..... Facebook.com/FSUBeachVB
 Instagram..... FSUBeachVolleyball
 Conference Website..... www.theccsa.com
 Conference Twitter..... @CCSA_Beach

2018 ROSTER

No.	Name	Ht	Yr	Hometown / High School / Last School
1	Macy Jerger	6-1	Jr.	Fort Myers, Fla. / Fort Myers
2	Eva Torruella	6-0	R-So.	San Juan, Puerto Rico / Saint Johns
3	Sara Putt	5-11	R-So.	Jupiter, Fla. / Jupiter / Stetson
4	Devan Hultquist	5-6	R-So.	Tallahassee, Fla. / Chiles
5	Lauren Anderson	6-0	Gr.	Peoria, Ariz. / Liberty / Utah State
10	Ali Eager	5-11	Jr.	Southlake, Texas / Liberty Christian
12	Vanessa Freire	5-10	Sr.	Windermere, Fla. / Lake Highland Prep
14	Marielle Diaz	5-6	Fr.	Boca Raton, Fla. / Calvary Christian Acad.
15	Alaina Chacon	5-6	Fr.	Crown Point, Ind. / Crown Point
20	Brooke Kuhlman	5-10	Jr.	Naples, Fla. / Barron Collier
21	Molly McBain	5-9	So.	Toronto, Ont. / Malvern Collegiate Inst.
24	Nikki Esposito	5-10	Jr.	Deerfield Beach, Fla. / Pompano Beach
25	Tory Paranagua	5-11	Sr.	Austin, Texas / Anderson
31	Ashley Robert	5-5	Fr.	McKinney, Texas / McKinney
32	Francesca Goncalves	5-10	So.	Dallas, Texas / Bishop Lynch
33	Madison Fitzpatrick	5-9	Fr.	Tallahassee, Fla. / Lincoln
34	Hailey Luke	6-0	R-Sr.	Altamonte Springs, Fla. / Lake Brantley
35	Katie Horton	6-1	R-Sr.	Westland, Mich. / Wayne Memorial
40	Breana Edwards	6-3	R-Jr.	Jacksonville, Fla. / Bishop Kenny
41	Avery Poppinga	5-11	Fr.	Austin, Texas / St. Stephen's Episcopal
42	Bailey Reardon	5-11	Fr.	Milton, Ga. / Milton

COACHING STAFF

Head Coach: Brooke Niles (3rd Season).....UC Santa Barbara (2003)
 Overall/FSU Record..... 94-18
Assistant Coach: Raul Papaleo (2nd Season)..... Indiana University-Purdue University at Fort Wayne (1999)
Volunteer Assistant Coach: Nick Lucena (1st Season).....Florida State (2003)
Director of Operations: Shawn Matthews (1st Season).....Abilene Christian University (2004)

PRONUNCIATIONS

#2	Eva Torruella	Ay-vah Tore-oooh-ay-uh
#10	Ali Eager	E-grr
#12	Vanessa Freire	Fray-TEE
#15	Alaina Chacon	Uh-LAY-nuh Shah-CONE
#20	Brooke Kuhlman	COAL-muhn
#25	Tory Paranagua	Pair-uh-NAH-guah
#32	Francesca Goncalves	Fran-CHESS-kah Gone-SAUL-ves
	Raul Papaleo	Rah-uhl Pah-pah-LAY-oh
	Nick Lucena	Loo-SEN-uh

2018 NCAA BEACH VOLLEYBALL CHAMPIONSHIP

MAY 4-6 • GULF SHORES, ALA. • GULF PLACE

FSU'S NCAA CHAMPIONSHIP HISTORY

2016

GULF SHORES, AL (3-2)

May 6 - First Round

Florida State d. Stelson.....	3-0
C1: Brown/Pardon vs. Strakova/Putt.....	DNF, 13-21, 21-17, 13-7
C2: K.Pellitteri/Paranagua d. Lind/Tormey.....	21-17, 21-12
C3: Freire/Sanchez d. Anderson/Carroll.....	21-16, 23-21
C4: Horton/Montgomery vs. Akins/Harris.....	DNF, 18-21, 21-14, 6-4
C5: Esposito/Luke d. Walsh/Richardson.....	16-21, 21-14, 15-10

May 6 - Second Round

Florida State d. Hawaii.....	3-2
C1: Brown/Pardon d. Spieler/Maglio.....	14-21, 21-17, 16-14
C2: K.Pellitteri/Paranagua d. Taylor/Schucht.....	21-15, 21-16
C3: Long/Tucker d. Freire/Sanchez.....	23-21, 21-19
C4: Horton/Montgomery d. Schreiber/Zalopany.....	21-16, 21-12
C5: Rooks/Homayun d. Esposito/Luke.....	22-20, 21-16

May 7 - Third Round

Southern Cal d. Florida State.....	3-1
C1: Hughes/Claes d. Brown/Pardon.....	21-14, 21-19
C2: K.Pellitteri/Paranagua vs. Strange/Bukovec.....	DNF, 15-21, 18-17
C3: Freire/Sanchez d. Martin/Wheeler.....	21-19, 24-22
C4: Bustamante/Belton d. Horton/Montgomery.....	21-17, 21-14
C5: Kremer/Nightingale d. Esposito/Luke.....	21-14, 24-22

May 8 - Semifinals

Florida State d. UCLA.....	3-1
C1: Brown/Pardon d. M.McNamara/N.McNamara.....	21-19, 24-22
C2: Schmitt/Tan d. K.Pellitteri/Paranagua.....	21-13, 21-15
C3: Freire/Sanchez d. Zappia/Carey.....	19-21, 21-15, 15-11
C4: Horton/Montgomery vs. Muno/Nguamo.....	DNF, 21-17, 17-21, 3-5
C5: Esposito/Jerger d. Consani/Buechler.....	21-16, 21-15

May 8 - Championship Final

Southern Cal d. Florida State.....	3-0
C1: Hughes/Claes d. Brown/Pardon.....	21-15, 21-10
C2: K.Pellitteri/Paranagua vs. Strange/Bukovec.....	DNF, 13-21, 17-16
C3: Martin/Wheeler d. Freire/Sanchez.....	23-21, 18-21, 15-10
C4: Horton/Montgomery vs. Bustamante/Belton.....	DNF, 13-21, 16-17
C5: Kremer/Nightingale d. Esposito/Jerger.....	21-14, 21-12

2017

GULF SHORES, AL (2-2)

May 5 - First Round

Hawaii d. Florida State.....	3-1
C1: Tucker/Martin d. Andrew/Kuhlman.....	21-15, 21-14
C2: Taylor/Schucht d. Freire/Paranagua.....	16-21, 21-18, 15-13
C3: Sanchez/Jerger vs. Weaver/Maglio.....	DNF, 23-21, 19-21, 17-17
C4: Kan/Homayun d. Horton/Goncalves.....	21-14, 16-21, 15-9
C5: Torruella/Luke d. Ozee/Hannah.....	21-14, 22-20

May 5 - Second Round

Florida State d. South Carolina.....	3-0
C1: Andrew/Kuhlman d. Culbert/Smith.....	25-23, 21-17
C2: Freire/Paranagua d. Williams/Denney.....	21-17, 21-19
C3: Sanchez/Jerger d. Zimmerman/Tendrich.....	21-14, 18-21, 15-13
C4: Horton/Goncalves vs. Mannisito/Schnieder.....	DNF, 18-21, 21-16, 13-13
C5: Torruella/Luke vs. Vitt/Harrison.....	DNF, 21-19, 17-21, 12-8

May 6 - Third Round

Florida State d. UCLA.....	3-1
C1: Andrew/Kuhlman d. McNamara/McNamara.....	21-19, 16-21, 17-15
C2: Freire/Paranagua d. Tan/Yeomans.....	21-18, 16-21, 15-10
C3: Van Winden/Zappia d. Sanchez/Jerger.....	21-13, 21-13
C4: Horton/Goncalves d. Carey/Anderson.....	21-18, 21-18
C5: Torruella/Luke vs. Justine/Simo.....	DNF, 20-22, 21-19, 11-14

May 6 - Fourth Round

Hawaii d. Florida State.....	3-2
C1: Andrew/Kuhlman d. Tucker/Martin.....	21-14, 15-21, 17-15
C2: Freire/Paranagua d. Taylor/Schucht.....	18-21, 21-19, 15-12
C3: Weaver/Maglio d. Sanchez/Jerger.....	21-16, 20-22, 15-7
C4: Kan/Homayun d. Horton/Goncalves.....	21-14, 22-20
C5: Ozee/Hannah d. Torruella/Luke.....	21-17, 21-18, 27-25



The Florida State beach volleyball team will hold the No. 4 seed in the NCAA Championship, which takes place May 4-6 in Gulf Shores, Ala. The Seminoles enter the championship as the top team in the east, and will face off against seven of the best teams in the nation at Gulf Place.

"We are really excited to be chosen again as one of the eight teams to compete in the championship," said head coach Brooke Niles. "We're just ready to get out there and compete."

FSU opens play at the event against two-time defending national champion Southern California. In a rematch of the 2016 title game, the two teams square off at 11 am ET (10 am CT) on Friday, May 4. The winner advances to the second round (Match 7) Friday at 4:00 pm ET, while the loser moves to the first round of the elimination bracket (Match 5) Friday at 2:00 pm. The Seminoles' first two matches will air on ESPN.

Florida State is one of only two programs in the nation to make an appearance in every AVCA (2012-15) and NCAA (2016-18) Championship. FSU finished as the national runner-up in 2014 and 2016, and posted back-to-back top three finishes in 2012 and 2013.

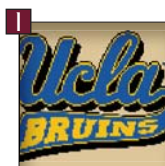
The Seminoles head into the national championship riding a streak of 18 consecutive victories, and just two weeks after claiming the team's third CCSA Championship. The team went undefeated against conference opponents this season, and has not lost to an East Coast team since head coach Brooke Niles took the helm in 2016.

FSU saw seven opponents ranked in the AVCA Top-10 this season, with 18 matches taking place against teams ranked in the Top-15 with a 12-6 record in those matches. The Seminoles did not lose to a team currently ranked lower than sixth in the polls, and posted sweeps in 20 matches this season without being swept once.

SUNDAY, MAY 6

Championship: #4 FSU vs. #3 Hawaii/#1 UCLA - 1 pm CT (ESPN)

FSU VS. THE FIELD



- » FSU leads 7-4
- » Last meeting: FSU def. UCLA 3-1 in NCAA Second Round (5/4/18)
- » Postseason: FSU has now defeated UCLA three times in the NCAA Championship ('16, '17 and '18)



- » FSU leads 8-0
- » Last meeting: FSU def. LSU 3-0 at CCSA finals (4/22) in Emerson
- » Postseason: The two have only met in the CCSA Championship (3x)



- » Pepperdine leads 9-1
- » Last meeting: Pepp def. FSU 4-1 (3/13) at Zuma Beach
- » Postseason: Pepperdine def. FSU three times at the AVCA Champ.



- » FSU leads 11-0
- » Last meeting: FSU def. SC 4-1 (2/23) in Deland
- » Postseason: FSU def. SC 3-0 in NCAA elimination bracket in 2017



- » FSU leads 7-4
- » Last meeting: FSU def. UH 3-2 in the NCAA Semifinals
- » Postseason: Hawaii beat FSU twice last season; FSU won once in 2016 and once in 2018.



- » FSU leads 8-2
- » Last meeting: FSU def. FIU 5-0 in CCSA Champ. semifinal (4/22) in Emerson
- » Postseason: Both teams won one match against the other in the AVCA Championship.



- » USC leads 8-4
- » Last meeting: FSU def. USC 3-1 in NCAA First Round (5/4/18)
- » Postseason: USC def. FSU twice at the NCAA Champ, once in the 2016 final match; FSU won once in 2018.



2018 National Collegiate Beach Volleyball Championship

**Gulf Place
Gulf Shores, Alabama
May 4-6, 2018**



All times are Central time.
Information subject to change.
All Dual times are "not before" times with a minimum of a 10 minute on court warmup.
Each individual court of every dual will be streamed live on ESPN3.

© 2015 National Collegiate Athletic Association. No commercial use without the NCAA's written permission.
The NCAA opposes all forms of sports wagering.

BROADCAST GUIDE

25



SR • 5-11 • AUSTIN, TEXAS

No. 1

TORY PARANAGUA / VANESSA FREIRE

- » One of two FSU pairs named to the CCSA All-Conference Team.
- » 15-4 season record (.789), all in the No. 1 position
- » Both hit 100 career overall wins this season, making them two of six players in program history to reach the milestone.
- » Paranagua is one win away from becoming the first Seminole to earn 100 career dual match wins.

12



SR • 5-10 • WINDERMERE, FLA.

34



R-SR • 6-0 • ALTAMONTE SPRINGS, FLA.

No. 2

HAILEY LUKE / KATIE HORTON

- » CCSA Tournament MVP
- » 33-3 season record (.917), undefeated at No. 1 (2-0) and No. 2 (18-0)
- » Has won their last 22 matches, with most wins coming in the No. 2 position.
- » Clinched FSU's win over #5 USC at the 2018 NCAA Championship
- » Horton leads the team with 34 wins this season.
- » Both had successful indoor volleyball careers at FSU; this is the only year they were both able to focus on beach.

35



R-SR • 6-1 • WESTLAND, MICH.

1



JR • 6-1 • FORT MYERS, FLA.

No. 3

MACY JERGER / SARA PUTT

- » 19-1 (.950) season record, with one win at No. 2 and 18 wins at No. 3.
- » Jerger holds the program record for most wins earned in the No. 3 position with a 44-11 record.
- » Holds the second-highest pairs record on the team with 19 wins.
- » Jerger was named CCSA Scholar-Athlete of the Year twice (2017 and 2018).
- » Putt was an All-American with Stetson in 2016.

3



R-SO • 5-11 • JUPITER, FLA.

20



JR • 5-10 • JUPITER, FLA.

No. 4

BROOKE KUHLMAN / MOLLY MCBAIN

- » 14-3 record (.824), all in the No. 4 position.
- » The pair has won 13 of their last 15 matches.
- » Clinched both of FSU's wins on the first day of the the CCSA Championship.
- » Clinched FSU's win over top-seeded UCLA in the 2018 NCAA Championship.
- » McBain owns the fourth-most wins on the team with a 26-6 record this season.
- » Kuhlman was named an AVCA All-American in 2017.

21



SO • 5-9 • TORONTO, ONT.

32



SO • 5-10 • DALLAS, TEXAS

No. 5

FRANCESCA GONCALVES / MADISON FITZPATRICK

- » 4-1 record.
- » Earned the first point for the Seminoles in both of their matches on the first day of the 2018 NCAA Championship, and clinched the team's 3-2 win against Hawaii in the winners bracket semifinal
- » Goncalves holds a 29-5 record this season with 19 wins in the No. 5 position. She has a 59-12 record as a sophomore.
- » Fitzpatrick has an 14-4 record in the No. 5 position.

33



FR • 5-9 • TALLAHASSEE, FLA.

AVCA TOP 20 COACHES POLL

WEEK #8 POLL • APRIL 16, 2018

No.	School	2017 Rec.	Prev Rk
1	UCLA*	30-3	1
2	Pepperdine*	21-3	2
3	Hawai'i*	32-3	3
4	Cal Poly	23-5	5
5	Southern California*	20-10	4
6	Long Beach State*	22-4	6
7	Florida State	24-6	7
8	LSU*	22-10	8
9	South Carolina*	20-6	9
10	Florida International*	20-8	10
11	Georgia State*	22-10	11
12	Stanford	16-10	14
13	California	19-6	13
14	Arizona	16-10	12
15	Loyola Marymount*	19-12	16
16	Grand Canyon*	11-14	15
17	Stetson*	27-8	17
18	Florida Atlantic*	17-12	18
19	Tulane*	21-12	19
20	Saint Mary's	14-9	NR

Others receiving votes: Washington, College of Charleston*, TCU*, Florida Gulf Coast, UAB*, Arizona State

DiG MAGAZINE COLLEGIATE BEACH POLL

WEEK #8 POLL • APRIL 16, 2018

No.	School (1st Place Votes)	2017 Rec.	Prev Rk
1	UCLA (19)*	30-3	1
2	Pepperdine*	21-3	2
3	Hawaii*	32-3	3
4	Cal Poly	23-5	5
5	USC*	20-10	4
6	Long Beach State*	22-4	6
7	Florida State	24-6	7
8	LSU*	22-10	8
9	South Carolina*	20-6	10
10	Florida International*	20-8	9
11	California	19-6	11
12	Georgia State*	22-10	12
13	Stanford	16-10	13
14	Arizona	16-10	14
15	Tulane*	21-12	16
16	Florida Atlantic*	17-12	15
17	Loyola Marymount*	19-12	17
18	Stetson*	27-8	19
19	St. Mary's	14-9	18
20	Grand Canyon*	11-14	20

Others receiving votes: Washington, Charleston*, Texas A&M Kingsville

* 2018 Opponent

KEY STORYLINES

TOP-RANKED COACHING STAFF

- » Head Coach Brooke Niles brought on Olympian, professional beach player, and her former coach on the pro tour Angela Rock as the volunteer assistant coach for 2018.
- » All three coaches in have played professionally, while both Rock and Papaleo are Olympians.

WHOOOP BANDS

- » The FSU beach volleyball team is the only collegiate beach team in the country to use Whoop Fitness Trackers to track performance and improve recovery time.

AN ELITE PROGRAM

- » FSU returns nearly every one of its starters for the 2018 season, the year after claiming its second consecutive CCSA Championship.
- » Florida State is just one of two beach volleyball programs (along with Pepperdine) to have played in every AVCA and NCAA Championship tournament.
- » Since 2012, FSU has been recognized with 11 AVCA Beach All-America honors from eight different players. The Seminoles' eight All-Americans are tied for the third-most nationally.

FSU'S 2018 RECORD WHEN...

Playing at home	7-0
Playing on the road	2-2
Playing at a neutral site	24-4
Non-conference matches (regular season)	14-6
CCSA matches (regular season)	10-0
When winning at No. 1	20-0
When losing at No. 1	6-7
When winning at No. 2	25-2
When losing at No. 2	4-4
When winning at No. 3	30-1
When losing at No. 3	1-5
When winning at No. 4	27-3
When losing at No. 4	2-3
When winning at No. 5	29-2
When losing at No. 5	1-4
In February.....	4-0
In March.....	12-6
In April.....	14-0
In May.....	3-0

SEASON AT A GLANCE

THREE-PEAT: Florida State claimed its third consecutive CCSA Championship on April 22. The team saw its most productive championship run this season, giving up only one point in its six matches over the weekend. FSU finished at the top of Pool A, then faced FIU in the semifinal and LSU in the finals.

NO. 1 SEED IN CCSA CHAMPIONSHIP - For the third year in a row, FSU received the top seed in the CCSA Beach Volleyball Championship. The Seminoles posted a perfect 10-0 record in conference play this season and finished with a 46-4 pairs record against the eight CCSA opponents it saw in 2018.

PARANAGUA/FREIRE AVCA AND CCSA PAIR OF THE WEEK - After going 5-0 at the Battle on the Bayou, FSU's top seeded pair took home both the AVCA/CollegeBeachVB.com National Pair of the Week and CCSA Conference Pair of the Week honors. The pair was one of only five No. 1 pairs on an AVCA Top-20 team to go undefeated, with only three of those programs winning every match over the weekend.

LSU'S BATTLE ON THE BAYOU - The Seminoles closed out the regular season going 5-0 in Baton Rouge, including two conference wins over Georgia State and LSU. FSU finished the regular season with a perfect 10-0 record in conference play.

SEMINOLE BEACH BATTLE - FSU dominated its competition in its final home event of the season, sweeping three opponents without dropping a single set in any of the five scored positions. The Seminoles took down Florida Atlantic, UNC Wilmington and TCU on the first day of the event before the second day had to be canceled due to weather.

SURF N TURF INVITATIONAL - Florida State went 4-1 at FIU's Surf N Turf Invitational in South Beach, falling to UCLA and then going 4-0 against TCU, Tulane, FIU and Grand Canyon. FSU's pair of Hailey Luke and Katie Horton went undefeated in all five matches of the tournament.

OFF WEEK - The Seminoles had a weekend off at the end of March - a rarity in a sport with such a short season - giving the team an opportunity to host a Garnet and Gold Tournament in Tallahassee. The 10-team double-elimination tournament gave the team a chance to compete against each other in new pairings. Sara Putt and Macy Jerger took home the title at the end of the event.

SPRING BREAK - FSU stayed in Southern California for the remainder of spring break, playing a series of single-dual matches against Pepperdine, Long Beach State and Loyola Marymount. The Seminoles then headed home to take on Houston Baptist and Jacksonville in Tavares, Fla. for the Hickory Point Lake Bash to go 3-2 on the week. A pair of sweeps against LMU and JU brought the team's shutouts this season to six.

EAST MEETS WEST CHALLENGE - FSU headed to Manhattan Beach to participate in UCLA's annual East Meets West Challenge. The Seminoles earned their first losses of the season against Pepperdine, UCLA and USC, but picked up a 4-1 win over then-ranked No. 3 Hawaii.

FSU INVITATIONAL - The Seminoles remained undefeated through the team's first two tournaments, taking down St. Petersburg College, College of Charleston and Stetson in their first home event of the season. FSU came out of the tournament as the only undefeated AVCA Top-5 program.

GONCALVES/PUTT VOLLEYMOB PAIR OF THE WEEK - The No. 3 duo of Francesca Goncalves and Sara Putt earned the first weekly honor for the Seminoles following their performance at the Stetson Spring Fling. The pair earned three straight-set victories and one three-set comeback win, and clinched all four wins for FSU.

STETSON SPRING FLING - The Seminoles went undefeated at their first event of the season, taking down four ranked opponents - #16 Florida Atlantic, #8 South Carolina, #12 Georgia State and #15 Stetson. Out of the six teams competing in the event, FSU was the only one to come out undefeated.

CCSA PRESEASON ALL-CONFERENCE - The Seminoles placed a program record four on the Preseason All-CCSA team, and Vanessa Freire took home her second consecutive Preseason Player of the Year award. Tory Paranagua, Brooke Kuhlman and Francesca Goncalves made the list, while Hailey Luke was named to the CCSA Preseason Watch List. It marked the second year in a row FSU placed the most players of any team on the list, and the third year a Seminole took Preseason Player of the Year.

AWARDS & ACCOLADES

SARA PUTT

- » VolleyMob Pair of the Week w/ Francesca Goncalves (Feb. 27)
- » CCSA All-Tournament Team w/ Macy Jerger

VANESSA FREIRE

- » CCSA Preseason Player of the Year
- » Weaver-James-Corrigan Award winner (ACC Postgraduate Scholarship)
- » AVCA/CollegeBeachVB.com Pair of the Week w/ Tory Paranagua (April 16)
- » CCSA Pair of the Week w/ Tory Paranagua (April 16)
- » CCSA All-Conference w/ Tory Paranagua

BROOKE KUHLMAN

- » CCSA Preseason All-Conference Team

TORY PARANAGUA

- » CCSA Preseason All-Conference Team
- » AVCA/CollegeBeachVB.com Pair of the Week w/ Vanessa Freire (April 16)
- » CCSA Pair of the Week w/ Vanessa Freire (April 16)
- » CCSA All-Conference w/ Vanessa Freire

FRANCESCA GONCALVES

- » CCSA Preseason All-Conference Team
- » VolleyMob Pair of the Week w/ Sara Putt (Feb. 27)

HAILEY LUKE

- » CCSA Preseason Watch List
- » CCSA All-Conference w/ Katie Horton
- » CCSA Tournament MVP w/ Katie Horton
- » VolleyMob Pair of the Week w/ Katie Horton (Apr. 24)

KATIE HORTON

- » CCSA All-Conference w/ Hailey Luke
- » CCSA Tournament MVP w/ Hailey Luke
- » VolleyMob Pair of the Week w/ Hailey Luke (Apr. 24)

MACY JERGER

- » CCSA Scholar-Athlete of the Year
- » CCSA All-Tournament Team w/ Sara Putt

WEEK-BY-WEEK RANKINGS

Date	AVCA / DiG
Preseason (Feb 20).....	4 / 5
Week 1 (Feb 26).....	4 / 3
Week 2 (March 5).....	5 / 3
Week 3 (March 12).....	4 / 4
Week 4 (March 19).....	7 / 7
Week 5 (March 26).....	7 / 7
Week 6 (April 2).....	7 / 7
Week 7 (April 9).....	7 / 7
Week 8 (April 16).....	7 / 7
Week 9 (April 23).....	7 / 7
Week 10 (April 30).....	7 / 7

2018 STATS

SCHEDULE & RESULTS BY COURTS

RECORD: 3-6, HOME: 8-0, ROAD: 2-2, NEUTRAL: 15-4, CCSA: 10-0

Date	Opponent	FSU Rank	Opp.Rank	W/L	Score	1	2	3	4	5	Overall Record
Fri, Feb. 23	vs. Florida Atlantic* ¹	4/5	16/-	W	5-0	W	W	W	W	W	1-0
Fri, Feb. 23	vs. South Carolina* ¹	4/5	8/9	W	4-1	W	L	W	W	W	2-0
Sat, Feb. 24	vs. Georgia State* ¹	4/5	12/16	W	4-1	L	W	W	W	W	3-0
Sat, Feb. 24	vs. Stetson ¹	4/5	15/15	W	4-1	W	L	W	W	W	4-0
Fri, March 2	vs. St. Petersburg College ²	4/5	-/-	W	5-0	W	W	W	W	W	5-0
Fri, March 2	vs. St. Petersburg College ²	4/5	-/-	W	4-0	W	W	W	W	-	6-0
Sat, March 3	vs. College of Charleston* ²	4/5	-/-	W	5-0	W	W	W	W	W	7-0
Sat, March 3	vs. Stetson ²	4/5	15/16	W	4-1	W	L	W	W	W	8-0
Sat, March 10	vs. Pepperdine ³	5/3	1/1	L	1-4	L	L	L	L	W	8-1
Sat, March 10	vs. Hawai'i ³	5/3	3/2	W	4-1	W	L	W	W	W	9-1
Sun, March 11	vs. UCLA ³	5/3	4/5	L	2-3	L	W	L	W	L	9-2
Sun, March 11	vs. USC ³	5/3	2/4	L	2-3	L	L	W	W	L	9-3
Wed, Mar. 15	at Pepperdine	4/4	1/1	L	1-4	L	L	L	L	W	9-4
Thurs, Mar. 16	at Loyola Marymount	4/4	16/15	W	5-0	W	W	W	W	W	10-4
Thurs, Mar. 16	at Long Beach State	4/4	8/8	L	1-4	L	L	L	W	L	10-5
Sat, March 17	vs. Houston Baptist ⁴	4/4	RV/-	W	4-1	L	W	W	W	W	11-5
Sat, March 17	vs. Jacksonville ⁴	4/4	-/-	W	5-0	W	W	W	W	W	12-5
Fri, March 30	vs. UCLA ⁵	7/7	2/2	L	1-4	L	W	L	L	L	12-6
Fri, March 30	vs. TCU ⁵	7/7	RV/RV	W	4-1	L	W	W	W	W	13-6
Fri, March 30	vs. Tulane* ⁵	7/7	RV/RV	W	5-0	W	W	W	W	W	14-6
Sat, March 31	vs. FIU* ⁵	7/7	12/14	W	4-1	W	W	W	W	W	15-6
Sat, March 31	vs. Grand Canyon ⁵	7/7	12/11	W	5-0	L	W	W	W	W	16-6
Fri, April 6	vs. FAU* ⁶	7/7	18/19	W	5-0	W	W	W	W	W	17-6
Fri, April 6	vs. UNC Wilmington* ⁶	7/7	-/-	W	5-0	W	W	W	W	W	18-6
Fri, April 6	vs. TCU ⁶	7/7	RV/RV	W	5-0	W	W	W	W	W	19-6
Sat, April 14	vs. Georgia State* ⁷	7/7	11/12	W	5-0	W	W	W	W	W	20-6
Sat, April 14	vs. Houston Baptist ⁷	7/7	-/-	W	5-0	W	W	W	W	W	21-6
Sat, April 14	vs. New Orleans ⁷	7/7	-/-	W	5-0	W	W	W	W	W	22-6
Sun, April 15	at LSU* ⁷	7/7	8/8	W	3-2	W	W	W	L	L	23-6
Sun, April 15	vs. Jacksonville State ⁷	7/7	-/-	W	5-0	W	W	W	W	W	24-6
Fri, April 20	vs. UNC Wilmington ⁸	7/7	-/-	W	5-0	W	W	W	W	W	25-6
Fri, April 20	vs. Florida Atlantic ⁸	7/7	-/-	W	5-0	W	W	W	W	W	26-6
Sat, April 21	vs. LSU ⁸	7/7	8/8	W	4-1	L	W	W	W	W	27-6
Sat, April 21	vs. Georgia State ⁸	7/7	11/12	W	5-0	W	W	W	W	W	28-6
Sun, April 22	vs. FIU ⁸	7/7	10/10	W	5-0	W	W	W	W	W	29-6
Sun, April 22	vs. LSU ⁸	7/7	8/8	W	3-0	-	W	W	-	W	30-6
Fri, May 4	vs. USC ⁹	#4	#5	W	3-1	L	W	W	-	W	31-6
Fri, May 4	vs. UCLA ⁹	#4	#1	W	3-1	L	-	W	W	W	32-6
Sat, May 5	vs. Hawai'i ⁹	#4	#3	W	3-2	W	W	L	L	W	33-6

Bold denotes home match; * denotes conference opponent; first ranking = AVCA, second ranking = DIG Magazine

¹Stetson Spring Fling (DeLand, Fla.); ²FSU Invitational(Tallahassee, Fla.); ³East Meets West Challenge (Manhattan Beach, Calif.); ⁴Hickory Point Lake Bash (Tavares, Fla.); ⁵Surf & Turf Invitational (Miami, Fla. - South Beach); ⁶Seminole Beach Battle (Tallahassee, Fla.); ⁷Battle on the Bayou (Baton Rouge, La.); ⁸CCSA Championship Pool Play, ⁹NCAA Championship

2018 STATS

STARTS BY POSITION

RECORD: 33-6, HOME: 8-0, ROAD: 2-2, NEUTRAL: 15-4, CCSA: 10-0

Date	Opponent	1	2	3	4	5
Fri, Feb. 23	vs. Florida Atlantic	Jerger/Paranagua	Kuhlman/Freire	Goncalves/Putt	Luke/Horton	McBain/Torruella
Fri, Feb. 23	vs. South Carolina	Jerger/Paranagua	Kuhlman/Freire	Goncalves/Putt	Luke/Horton	McBain/Torruella
Sat, Feb. 24	vs. Georgia State	Jerger/Paranagua	Kuhlman/Freire	Goncalves/Putt	Luke/Horton	McBain/Fitzpatrick
Sat, Feb. 24	vs. Stetson	Jerger/Paranagua	Kuhlman/Freire	Goncalves/Putt	Luke/Horton	McBain/Fitzpatrick
Fri, March 2	vs. St. Petersburg College	Jerger/Paranagua	Kuhlman/Freire	Putt/Eager	Reardon/Chacon	Anderson/Torruella
Fri, March 2	vs. St. Petersburg College	Jerger/Paranagua	Kuhlman/Freire	Goncalves/Putt	Luke/Horton	-
Sat, March 3	vs. College of Charleston	Jerger/Paranagua	Kuhlman/Freire	Luke/Horton	Goncalves/Putt	McBain/Fitzpatrick
Sat, March 3	vs. Stetson	Jerger/Paranagua	Kuhlman/Freire	Putt/Eager	Luke/Horton	McBain/Fitzpatrick
Sat, March 10	vs. Pepperdine	Jerger/Paranagua	Kuhlman/Freire	Goncalves/Putt	Luke/Horton	McBain/Fitzpatrick
Sat, March 10	vs. Hawai'i	Jerger/Paranagua	Freire/Putt	Kuhlman/Goncalves	Luke/Horton	McBain/Fitzpatrick
Sun, March 11	vs. UCLA	Jerger/Paranagua	Freire/Putt	Kuhlman/Goncalves	Luke/Horton	McBain/Fitzpatrick
Sun, March 11	vs. USC	Jerger/Paranagua	Freire/Putt	Kuhlman/Goncalves	Luke/Horton	McBain/Fitzpatrick
Wed, Mar. 15	at Pepperdine	Putt/Freire	Paranagua/Jerger	Kuhlman/Goncalves	Luke/Horton	McBain/Fitzpatrick
Thurs, Mar. 16	at Loyola Marymount	Putt/Freire	Kuhlman/Jerger	Paranagua/Eager	Luke/Horton	McBain/Fitzpatrick
Thurs, Mar. 16	at Long Beach State	Putt/Freire	Kuhlman/Jerger	Luke/Horton	Paranagua/Chacon	McBain/Fitzpatrick
Sat, March 17	vs. Houston Baptist	Putt/Freire	Luke/Horton	Kuhlman/Goncalves	Paranagua/Chacon	McBain/Fitzpatrick
Sat, March 17	vs. Jacksonville	Luke/Horton	Freire/Esposito	Paranagua/Chacon	Kuhlman/Goncalves	McBain/Fitzpatrick
Fri, March 30	vs. UCLA	Freire/Putt	Horton/Luke	Paranagua/Chacon	Kuhlman/McBain	Goncalves/Fitzpatrick
Fri, March 30	vs. TCU	Freire/Putt	Paranagua/Jerger	Luke/Horton	McBain/Chacon	Goncalves/Torruella
Sat, March 31	vs. Tulane	Freire/Paranagua	Putt/Jerger	Luke/Horton	Kuhlman/McBain	Goncalves/Torruella
Sat, March 31	vs. FIU	Freire/Paranagua	Luke/Horton	Putt/Jerger	Kuhlman/McBain	Goncalves/Torruella
Sat, March 31	vs. Grand Canyon	Freire/Paranagua	Luke/Horton	Putt/Jerger	Kuhlman/McBain	Goncalves/Torruella
Fri, April 6	vs. FAU	Freire/Paranagua	Luke/Horton	Putt/Jerger	Kuhlman/McBain	Goncalves/Torruella
Fri, April 6	vs. UNC Wilmington	Freire/Paranagua	Luke/Horton	Putt/Jerger	Kuhlman/McBain	Goncalves/Torruella
Fri, April 6	vs. TCU	Freire/Paranagua	Luke/Horton	Putt/Jerger	Kuhlman/McBain	Goncalves/Torruella
Sat, April 14	vs. Georgia State	Freire/Paranagua	Luke/Horton	Putt/Jerger	Kuhlman/McBain	Goncalves/Torruella
Sat, April 14	vs. Houston Baptist	Freire/Paranagua	Luke/Horton	Putt/Jerger	Kuhlman/McBain	Goncalves/Torruella
Sat, April 14	vs. New Orleans	Freire/Paranagua	Luke/Horton	Putt/Jerger	Goncalves/Torruella	Eager/Esposito
Sun, April 15	at LSU	Freire/Paranagua	Luke/Horton	Putt/Jerger	Kuhlman/McBain	Goncalves/Torruella
Sun, April 15	vs. Jacksonville State	Freire/Paranagua	Horton/Esposito	Putt/Jerger	Chacon/Torruella	Goncalves/Fitzpatrick
Fri, April 20	vs. UNC Wilmington	Freire/Paranagua	Luke/Horton	Putt/Jerger	Kuhlman/McBain	Goncalves/Torruella
Fri, April 20	vs. Florida Atlantic	Freire/Paranagua	Luke/Horton	Putt/Jerger	Kuhlman/McBain	Goncalves/Torruella
Sat, April 21	vs. LSU	Freire/Paranagua	Luke/Horton	Putt/Jerger	Kuhlman/McBain	Goncalves/Torruella
Sat, April 21	vs. Georgia State	Freire/Paranagua	Luke/Horton	Putt/Jerger	Kuhlman/McBain	Goncalves/Torruella
Sun, April 22	vs. FIU	Freire/Paranagua	Luke/Horton	Putt/Jerger	Kuhlman/McBain	Goncalves/Torruella
Sun, April 22	vs. LSU	Freire/Paranagua	Luke/Horton	Putt/Jerger	Kuhlman/McBain	Goncalves/Torruella
Fri, May 4	vs. USC	Freire/Paranagua	Luke/Horton	Putt/Jerger	Kuhlman/McBain	Goncalves/Fitzpatrick
Fri, May 4	vs. UCLA	Freire/Paranagua	Luke/Horton	Putt/Jerger	Kuhlman/McBain	Goncalves/Fitzpatrick
Sat, May 5	vs. Hawaii	Freire/Paranagua	Luke/Horton	Putt/Jerger	Kuhlman/McBain	Goncalves/Fitzpatrick

Bold denotes clinching point

2018 STATS

MATCH-BY-MATCH RESULTS

Macy Jerger/Tory Paranagua (9-5)

DATE	POS	OPPONENT	RESULT
Feb 23	1	Jessalyn Kinlaw/Gabrielle Dischler (FAU)	W, 21-12, 17-21, 15-6
Feb 23	1	Shannon Williams/Ali Denney (SC)	W, 21-14, 21-14
Feb 24	1	Teegan Van Gunst/Tiffany Creamer (GSU)	L, 15-21, 19-21
Feb 24	1	Darby Dunn/Sammee Thomas (STET)	W, 15-21, 21-14, 15-11
Mar 2	1	Ana Costa/Amanda Fillipo (SPC)	W, 21-19, 21-16
Mar 2	1	Ana Costa/Amanda Fillipo (SPC)	W, 21-13, 19-21, 15-8
Mar 3	1	Krissy Mummey/Katja Ehlers (COFC)	W, 22-20, 21-11
Mar 3	1	Darby Dunn/Sammee Thomas (STET)	W, 21-16, 21-16
Mar 10	1	Madalyn Roh/Brook Bauer (PEPP)	L, 23-25, 18-21
Mar 10	1	Laurel Weaver/Carly Kan (UH)	W, 26-24, 21-19
Mar 11	1	Megan McNamara/Nicole McNamara (UCLA)	L, 16-21, 13-21
Mar 11	1	Abril Bustamante/Tina Gaudina (USC)	L, 9-21, 8-21
Mar 14	2	Deahna Kraft/Corinne Quiggle (PEPP)	L, 14-21, 13-21
Mar 30	2	Jensyn Bledsoe/ Molly Scheel (TCU)	W, 21-16, 21-13

Brooke Kuhlman/Vanessa Freire (5-4)

DATE	POS	OPPONENT	RESULT
Feb 23	2	Carly Scarborough/Brittany Pellitteri (FAU)	W, 21-16, 23-21
Feb 23	2	Carly Schnieder/Katie Smith (SC)	L, 26-24, 16-21, 10-15
Feb 24	2	Annika Van Gunst/Brooke Weiner (GSU)	W, 21-15, 22-20
Feb 24	2	Carly Perales/S. Helland-Hansen (STET)	L, 21-19, 16-21, 12-15
Mar 2	2	Giovanna Goncalves/Kyce Martins (SPC)	W, 21-17, 21-14
Mar 2	2	Giovanna Goncalves/Kyce Martins (SPC)	W, 21-17, 21-16
Mar 3	2	McKala Rhodes/Devon Rachel (COFC)	W, 19-21, 21-19, 15-9
Mar 3	2	Sunniva Helland-Hansen (STET)	L, 21-17, 14-21, 13-15
Mar 10	2	Corinne Quiggle/Deahna Kraft (PEPP)	L, 15-21, 15-21

Francesca Goncalves/Sara Putt (6-1)

DATE	POS	OPPONENT	RESULT
Feb 23	3	Nicole Navarro/Nicole Grant (FAU)	W, 21-16, 23-21
Feb 23	3	Leah Perri/Macie Tendrich (SC)	W, 21-14, 21-15
Feb 24	3	Olivia Stasevich/Georgia Johnson (GSU)	W, 21-14, 21-15
Feb 24	3	Rachel Noble/Samantha Harria (STET)	W, 19-21, 22-20, 15-13
Mar 2	3	Janina Ocampos/Rafaela Biegelmeyer (SPC)	W, 21-6, 21-8
Mar 3	4	Lauren Freed/Allison Beckman (COFC)	W, 19-21, 21-10, 15-8
Mar 10	3	Heidi Dyer/Gigi Hernandez (PEPP)	L, 15-21, 21-18, 17-19

Sara Putt/Ali Eager (2-0)

DATE	POS	OPPONENT	RESULT
Mar 2	3	Janina Ocampos/Kylee Whiteleather (SPC)	W, 21-14, 21-7
Mar 3	3	Samantha Harris/Rachel Noble (STET)	W, 21-17, 21-12

Hailey Luke/Katie Horton (31-3)

DATE	POS	OPPONENT	RESULT
Feb 23	4	Mackenzie Morris/Erica Brok (FAU)	W, 21-14, 21-18
Feb 23	4	Julia Mannisto/Jess Vastine (SC)	W, 23-21, 21-11
Feb 24	4	Ashley McGinn/Allie Elson (GSU)	W, 21-8, 21-9
Feb 24	4	Quinci Birker/Rebecca Ingram (STET)	W, 21-13, 21-16
Mar 2	4	Janina Ocampos/Kylee Whiteleather (SPC)	W, 21-14, 21-6
Mar 3	3	Riana Brennan/Kennedy Madison (COFC)	W, 23-25, 21-11, 15-11
Mar 3	4	Katinka Krahn/Alexa Richardson (STET)	W, 21-18, 21-17
Mar 10	4	Skylar Caputo/Alexis Filippone (PEPP)	L, 23-25, 20-22
Mar 10	4	Amy Ozee/Ari Homayun (UH)	W, 21-13, 17-21, 18-16
Mar 11	4	Elise Zappia/Madi Yeomans (UCLA)	W, 18-21, 27-25, 15-13
Mar 11	4	Alexandra Poletto/Katrina Kernochan (USC)	W, 21-10, 21-18
Mar 14	4	Skylar Caputo/Alexis Filippone (PEPP)	L, 12-21, 21-18, 13-15
Mar 15	4	Chloe Reinig/Kekai Whitford (LMU)	W, 21-12, 21-13
Mar 15	3	Hailey Harward/Kristyna Adamcikova (LB)	L, 24-26, 23-25
Mar 17	2	Kayla Armer/Tori Hinojosa (HBU)	W, 21-15, 21-9
Mar 17	1	Savannah Siegrist/Mackenzie Swan (JU)	W, 21-11, 21-8
Mar 30	2	Sarah Sponcil/Lilly Justine (UCLA)	W, 21-19, 21-19
Mar 30	3	Bergeson Jillian/Juelyn Green (TCU)	W, 21-14, 21-13
Mar 31	3	Lan Nguyen/Tarin Mergener (TU)	W, 21-15, 18-21, 15-10
Mar 31	2	Madison Besterfield/Lina Bernier (FIU)	W, 21-11, 21-16
Mar 31	2	Taylor Jarzombek/Katie Pyles (GCU)	W, 21-3, 21-10
Apr 6	2	Gabrielle Dischler/Jessalyn Kinlaw (FAU)	W, 21-7, 25-23

Apr 6	2	Halle Hunt/JM Lewandowski (UNCW)	W, 21-16, 21-9
Apr 6	2	Jillian Bergeson/Jaelyn Greene (TCU)	W, 21-17, 21-9
Apr 14	2	Tiffany Creamer/Brooke Weiner (GSU)	W, 21-15, 21-13
Apr 14	2	Kayla Armer/Tori Hinojosa (HBU)	W, 13-21, 21-16, 15-9
Apr 14	2	Cara Sander/Victoria Corcoran (UNO)	W, 21-7, 21-17
Apr 15	2	Haleigh Nelson/Mandi Orellana (LSU)	W, 21-17, 21-10
Apr 20	2	JM Lewandowski/Brynn Montgomery (UNCW)	W, 21-10, 21-12
Apr 20	2	Gabrielle Dischler/Jessalyn Kinlaw (FAU)	W, 21-14, 21-12
Apr 21	2	Haleigh Nelson/Mandi Orellana (LSU)	W, 21-10, 21-12
Apr 21	2	Tiffany Creamer/Brooke Weiner (GSU)	W, 21-16, 21-13
Apr 22	2	Lina Bernier/Erika Zembyla (FIU)	W, 13-21, 21-14, 19-17
Apr 22	2	Haleigh Nelson/Mandi Orellana (LSU)	W, 21-18, 21-19

Bailey Reardon/Alaina Chacon (1-0)

DATE	POS	OPPONENT	RESULT
Mar 2	4	Amanda Fillipo/Janina Ocampos (SPC)	W, 18-21, 21-14, 24-22

Molly McBain/Eva Torruella (2-0)

DATE	POS	OPPONENT	RESULT
Feb 23	5	Kaila Dorish/Ashlan Cunningham (FAU)	W 21-10, 21-17
Feb 23	5	Franky Harrison/Hannah Edelman (SC)	W, 21-16, 11-21, 15-12

Molly McBain/Madison Fitzpatrick (10-3)

DATE	POS	OPPONENT	RESULT
Feb 24	5	Amie Held/Kate Novack (GSU)	W, 21-19, 21-14
Feb 24	5	Alexa Richardson/Julie Varga (STET)	W, 21-18, 21-17
Mar 3	5	Logan Manusky/Taylor Foley (COFC)	W, 21-11, 21-15
Mar 3	5	Rebecca Ingram/Quinci Birker (STET)	W, 21-16, 21-15
Mar 10	5	Maddie Dilfer/Jordan Ferrari (PEPP)	W, 21-14, 21-16
Mar 10	5	Hannah Zalopany/Paige Dreeuws (UH)	W, 21-15, 21-18
Mar 11	5	Izzy Carey/Megan Muret (UCLA)	L, 24-26, 16-21
Mar 11	5	Jenna Belton/Jo Kremer (USC)	L, 17-21, 17-21
Mar 14	5	Maddie Dilfer/Nikki Lyons (PEPP)	W, 21-19, 14-21, 11-15
Mar 15	5	Bozena Culo/Emma Doud (LMU)	W, 21-13, 18-21, 15-12
Mar 15	5	Marisa Ramsey/Hannah Matt (LB)	L, 13-21, 24-22, 13-15
Mar 17	5	Brennan Miller/Kali Fluke (HBU)	W, 21-15, 23-21
Mar 17	5	Hannah Marchand/Shaylee Beefus (JU)	W, 21-14, 21-8

Lauren Anderson/Eva Torruella (1-0)

DATE	POS	OPPONENT	RESULT
Mar 2	5	Giovanna Goncalves/Rafaela Biegelmeyer (SPC)	W, 21-13, 21-13

Vanessa Freire/Sara Putt (3-7)

DATE	POS	OPPONENT	RESULT
Mar 10	2	Emily Maglio/Ka'iwi Schucht (UH)	L, 20-22, 13-21
Mar 11	2	Lily Justine/Sarah Sponcil (UCLA)	W, 17-21, 21-15, 15-9
Mar 11	2	Terese Cannon/Sammy Slater (USC)	L, 13-21, 15-21
Mar 14	1	Brook Bauer/Madalyn Roh (PEPP)	L, 14-21, 21-14, 13-15
Mar 15	1	Savannah Slattery/McKayla Ferris (LMU)	W, 22-20, 15-21, 15-13
Mar 15	1	Sasha Karelov/Anete Brinke (LB)	L, 19-21, 17-21
Mar 17	1	Jessica Wooten/Aeriel Horton (HBU)	L, 21-16, 14-21, 12-15
Mar 17	2	Katie Krawczyk/Morgan Dees (JU)	W, 21-5, 21-14
Mar 30	1	Nicole McNamara/Megan McNamara (UCLA)	L, 15-21, 21-16, 13-15
Mar 30	1	Cassie House/Haven Hill (TCU)	L, 21-16, 22-24, 10-15

Brooke Kuhlman/Francesca Goncalves (5-1)

DATE	POS	OPPONENT	RESULT
Mar 10	3	Lea Monkhouse/Morgan Martin (UH)	W, 22-20, 21-16
Mar 11	3	Savvy Simo/Zana Muno (UCLA)	L, 21-17, 18-21, 15-17
Mar 11	3	Joy Dennis/Haley Hallgren (USC)	W, 21-19, 21-18
Mar 14	3	Heidi Dyer/Gigi Hernandez (PEPP)	L, 11-21, 17-21
Mar 17	3	Bailey Banks/Katya Silveira (HBU)	W, 21-17, 21-10
Mar 17	4	Cristina Finan/Shelby Babowicz (JU)	W, 21-14, 21-10

Brooke Kuhlman/Macy Jerger (1-1)

DATE	POS	OPPONENT	RESULT
Mar 14	2	Sara Kovac/Jessie Prichard (LMU)	W, 21-17, 21-18
Mar 15	2	Rachel Nieto/Nele Barber (LB)	L, 14-21, 11-21

2018 STATS

MATCH-BY-MATCH RESULTS

Paranagua/Eager (1-0)

DATE	POS	OPPONENT	RESULT
Mar 14	3	Veronica Nederend/Maddie Leiphardt (LMU)	W, 21-16, 26-21

Tory Paranagua/Alaina Chacon (3-1)

DATE	POS	OPPONENT	RESULT
Mar 15	4	Nicci Reinking/Zoi Konstantopoulou (LB)	W, 19-21, 21-12, 15-6
Mar 17	4	Jordyn Miller/Meagan Carter (HBU)	W, 21-14, 21-4
Mar 17	3	Mallory Mattingly/Lauren Peterson (JU)	W, 21-8, 21-13
Mar 30	3	Zana Muno/Savvy Simo (UCLA)	L, 13-21, 15-21

Brooke Kuhlman/Molly McBain (13-2)

DATE	POS	OPPONENT	RESULT
Mar 30	4	Elise Zappia/Mac May (UCLA)	L, 20-22, 17-21
Mar 31	4	Rio Frohoff/Gabriella Becerra (TU)	W, 21-15, 21-10
Mar 31	4	Estafanie Bethancour/Natalia Giron (FIU)	W, 21-12, 21-18
Mar 31	4	Jamie Walsh/Emily Reinking (GCU)	W, 21-12, 21-19
Apr 6	4	Nicole Navarro/Kaila Dorish (FAU)	W, 21-16, 21-16
Apr 6	4	Sarah Kelly/Raquel Rooney (UNCW)	W, 21-15, 21-16
Apr 6	4	Avery Arellano/Hannah Rogers (TCU)	W, 21-16, 21-17
Apr 14	4	Kate Novack/Amie Held (GSU)	W, 21-14, 21-19
Apr 14	4	Kali Fluke/Brennan Miller (HBU)	W, 21-15, 19-21, 15-12
Apr 15	4	Megan Davenport/Emmy Allen (LSU)	L, 17-21, 16-21
Apr 20	4	Raquel Rooney/Jaime Thomas (UNCW)	W, 21-13, 21-8
Apr 20	4	Nicole Navarro/Kaila Dorish (FAU)	W, 21-13, 21-12
Apr 21	4	Emmy Allen/Megan Davenport (LSU)	W, 21-10, 21-11
Apr 21	4	Amie Held/Kate Novack (GSU)	W, 21-16, 21-12
Apr 22	4	Mariana Dal Pozzo/Taija Thomas (FIU)	W, 21-13, 21-10
Apr 22	4	Emmy Allen/Megan Davenport (LSU)	DNF, 21-12, 19-21, 12-11

Francesca Goncalves/Madison Fitzpatrick (1-1)

DATE	POS	OPPONENT	RESULT
Mar 30	5	Izzy Carey/Megan Muret (UCLA)	L, 21-14, 31-33, 12-15
Apr 15	5	Ashley Clingan/Kim Krutsinger (JSU)	W, 21-7, 21-11

Molly McBain/Alaina Chacon (1-0)

DATE	POS	OPPONENT	RESULT
Mar 30	4	Hannah Rogers/Avery Arellano (TCU)	W, 21-19, 21-14

Francesca Goncalves/Eva Torruella (16-1)

DATE	POS	OPPONENT	RESULT
Mar 30	5	Brooke Sassin/Jordan Westendorf (TCU)	W, 21-14, 21-19
Mar 31	5	Ashley Delgado/Addie Hermsstad (TU)	W, 21-13, 21-14
Mar 31	5	Mariana Dal Pozzo/Taija Thomas (FIU)	W, 21-15, 21-19
Mar 31	5	Jessica Clerk/Madison Relaz (GCU)	W, 21-17, 21-11
Apr 6	5	Brittany Pellitteri/Julia Lewkowicz (FAU)	W, 21-17, 21-15
Apr 6	5	Courtney Mullinax/Jaime Thomas (UNCW)	W, 21-14, 21-10
Apr 6	5	Jordan Westendorff/Brooke Sassin (TCU)	W, 21-17, 21-14
Apr 14	5	Allie Elson/Ashley McGinn (GSU)	W, 21-14, 21-14
Apr 14	5	Danielle Wheeler/Mikayla Vivens (HBU)	W, 21-14, 21-7
Apr 14	4	Blessing Dunn/Brianna Vega (UNO)	W, 21-7, 21-13
Apr 15	5	Riley Young/Maddie Ligon (LSU)	L, 14-21, 21-14, 15-17
Apr 20	5	Courtney Mullinax/Sarah Kelly (UNCW)	W, 21-6, 21-12
Apr 20	5	Brittany Pellitteri/Julia Lewkowicz (FAU)	W, 17-21, 21-18, 15-11
Apr 21	5	Riley Young/Maddie Ligon (LSU)	W, 22-20, 21-14
Apr 21	5	Allie Elson/Ashley McGinn (GSU)	W, 21-15, 21-19
Apr 22	5	Natalia Giron/Estefanie Bethancour (FIU)	W, 28-26, 21-16
Apr 22	5	Riley Young/Maddie Ligon (LSU)	W, 21-17, 19-21, 15-12

Vanessa Freire/Tory Paranagua (14-2)

DATE	POS	OPPONENT	RESULT
Mar 31	1	Madeline Martz/Koglie McHugh (TU)	W, 21-17, 21-16
Mar 31	1	Federica Fresca/Margherita Bianchin (FIU)	W, 21-13, 17-21, 15-12
Mar 31	1	Molly Turner/Hannah Towne (GCU)	L, 13-21, 18-21
Apr 6	1	Carly Scarborough/Amanda Silva (FAU)	W, 21-17, 23-21
Apr 6	1	Maddy Kline/Nicole Lott (UNCW)	W, 21-16, 21-14
Apr 6	1	Cassie House/Haven Hill (TCU)	W, 21-15, 21-12
Apr 14	1	Teegan Van Gunst/Annika Van Gunst (GSU)	W, 21-11, 21-12

Apr 14	1	Jessica Wooten/Aeriel Horton (HBU)	W, 21-13, 21-18
Apr 14	1	Rachel Kuhn/Veronica Corcoran (UNO)	W, 21-12, 21-10
Apr 15	1	Claire Coppola/Kristen Nuss (LSU)	W, 21-13, 21-18
Apr 15	1	Katie Will/Sadie Anderson (JSU)	W, 21-10, 21-12
Apr 20	1	Nicole Lott/Maddy Kline (UNCW)	W, 21-18, 21-13
Apr 20	1	Carly Scarborough/Amanda Silva (FAU)	W, 21-19, 21-17
Apr 21	1	Claire Coppola/Kristen Nuss (LSU)	L, 12-21, 19-21
Apr 21	1	Annika Van Gunst/Teegan Van Gunst (GSU)	W, 21-16, 21-14
Apr 22	1	Federica Frasca/Margherita Bianchin (FIU)	W, 21-14, 18-21, 15-11
Apr 22	1	Claire Coppola/Kristen Nuss (LSU)	DNF, 12-21, 21-18, 14-13

Sara Putt/Macy Jerger (17-0)

DATE	POS	OPPONENT	RESULT
Mar 31	2	Louren Orlich/Anna Chin (TU)	W, 21-16, 21-11
Mar 31	3	Madison Besterfield/Lina Bernier (FIU)	W, 21-11, 21-16
Mar 31	3	Jessica Stansfield/Kelly Iverson (GCU)	W, 17-21, 21-11, 15-12
Apr 6	3	Erica Brok/Mackenzie Morris (FAU)	W, 21-12, 21-19
Apr 6	3	Katie McCullough/Brynn Montgomery (UNCW)	W, 21-9, 21-12
Apr 6	3	Molly Scheel/Jensyn Bledsoe (TCU)	W, 22-20, 21-14
Apr 14	3	Olivia Stasevich/Georgia Johnson (GSU)	W, 21-17, 21-18
Apr 14	3	Bailey Banks/Katya Silveria (HBU)	W, 22-20, 21-11
Apr 14	3	Jordan Schumacher/Kaitlyn Grice (UNO)	W, 21-12, 21-13
Apr 15	3	Olivia Powers/Hunter Domanski (LSU)	W, 21-15, 21-15
Apr 15	3	Hailey Hughes/Shayla Schmidt (JSU)	W, 21-11, 21-14
Apr 20	3	Halle Hunt/Katie McCullough (UNCW)	W, 21-13, 21-18
Apr 20	3	Erica Brok/Mackenzie Morris (FAU)	W, 21-5, 21-15
Apr 21	3	Olivia Powers/Hunter Domanski (LSU)	W, 21-19, 21-11
Apr 21	3	Olivia Stasevich/Georgia Johnson (GSU)	W, 21-14, 21-15
Apr 22	3	Katie Friesen/Dorina Klinger (FIU)	W, 21-17, 21-16
Apr 22	3	Olivia Powers/Hunter Domanski (LSU)	W, 11-21, 21-15, 15-9

Katie Horton/Nikki Esposito (1-0)

DATE	POS	OPPONENT	RESULT
Apr 15	2	Kaylie Milton/Hannah Kirk (JSU)	W, 21-13, 21-8

Alaina Chacon/Eva Torruella (1-0)

DATE	POS	OPPONENT	RESULT
Apr 15	4	Grace Jarnagin/Kaylee Frear (JSU)	W, 21-15, 21-9

Francesca Goncalves/Madison Fitzpatrick (1-0)

DATE	POS	OPPONENT	RESULT
Apr 15	5	Ashley Clingan/Kim Krutsinger (JSU)	W, 21-7, 21-11

HEAD COACH
BROOKE NILES
 THIRD SEASON • UC SANTA BARBARA (2003)



Niles' Winning Percentage

Year	School	Record	Winning %	NCAA
2016	Florida State	32-3	.914	Finals
2017	Florida State	29-9	.763	Semifinals
2018	Florida State	33-6	.846	—

Entering her third season with the program, head coach Brooke Niles has shaped Florida State beach volleyball into one of the most elite teams in the country, establishing the Seminoles as a national contender every year and a fixture in the AVCA Beach Top-20. Niles came to FSU prior to the 2016 season, and had previously coached at the collegiate, junior college, club and high school levels working with both indoor and sand volleyball teams.

In 2016, Niles led the Seminoles to unprecedented heights during the program's first season as an official NCAA Championship sport. Her first year in Tallahassee was highlighted by a series of program firsts including a school-record for dual-match victories (32), a conference championship, the top-seed in the inaugural NCAA Beach Volleyball Championship and a national runner-up finish.

Florida State hit the ground running under Niles, winning its first 14 matches, all on the road, with eight of those victories coming against ranked foes including five ranked in the top-10. One of those wins came against then-No. 2 Southern California in Los Angeles as the Seminoles snapped the Women of Troy's 19-match home win streak. FSU went on to earn the No. 1 overall seed at the NCAA Beach Volleyball Championship after claiming the 2016 Coastal Collegiate Sports Association (CCSA) Conference title.

The Seminoles finished the 2016 campaign as the national runner-up at the NCAA Beach Volleyball Championship in Gulf Shores, Ala. after posting a 3-2 record at the tournament. FSU went on to set the single-season school record for victories in a season with 32 and ranked in the Top 5 of the AVCA national poll all year. Along with their 14-match win streak, the Seminoles also put together a school-record 17-match win streak which saw Florida State outscore the opposition 71-10. At season's end, Florida State registered 19 victories over ranked schools, while posting an 11-3 mark against teams ranked in the Top 10.

In her second year under the helm Niles continued the winning tradition of Florida State beach volleyball. The team finished with the second-most wins in school history and the third most in the country (29). Niles and the Niles secured back-to-back CCSA Championships after they defeated FIU 3-0 in 34 minutes. Florida State reached their second consecutive NCAA Beach Volleyball Championship appearance and sixth straight post season appearance, tied for most of any school.

The Seminoles finished the 2017 season in fourth place at the NCAA Beach Volleyball Championship in Gulf Shore, Ala. after going 2-2 at the tournament. The Niles defeated a school record 22 ranked teams during the 2017 season, including 13 wins over top-10 teams and three over top-5 teams. The 2017 season saw the Garnet and Gold defeat Pepperdine for the first time in school history as they took down the second-ranked wave in Tallahassee.

Under Niles, Florida State garnered two AVCA All-Americans, six CCSA All-Conference selections, a league-best three student-athletes named to the CCSA All-Academic team in 2016, the CCSA Scholar Athlete of the Year (Macy Jerger) in 2017, the CCSA Pair of the Year in 2016 (Julie Brown/Jace Pardon) and 10 Seminoles who earned a spot on the CCSA Academic Honor Roll.

Niles was recognized for her outstanding effort in her first season at the helm of the Seminole beach volleyball program as she was named National Coach of the Year by the American Volleyball Coaches Association (AVCA).

AVCA TOP-10 WINS UNDER COACH NILES

Date	Season	FSU/Opp.Rank	Opponent	Site	Result	Score
Mar. 9	2016	4/6	Long Beach State	Long Beach, Calif.	W	5-0
Mar. 10	2016	4/3	UCLA	Santa Monica, Calif.	W	5-0
Mar. 11	2016	4/2	Southern Cal	Los Angeles, Calif.	W	3-2
Mar. 25	2016	2/10	Florida International*	DeLand, Fla.	W	4-1
Mar. 25	2016	2/4	UCLA	DeLand, Fla.	W	4-1
Apr. 15	2016	3/T-9	Georgia State*	Tallahassee, Fla.	W	3-2
Apr. 24	2016	3/9	Georgia State* ^	Emerson, Ga.	W	3-0
May 6	2016	3/9	Stetson #	Gulf Shores, Ala.	W	3-0
May 6	2016	3/5	Hawai'i #	Gulf Shores, Ala.	W	3-2
May 8	2016	3/4	UCLA #	Gulf Shores, Ala.	W	3-1
Mar. 4	2017	2/10	LSU*	DeLand, Fla.	W	4-1
Mar. 4	2017	2/9	Stetson	DeLand, Fla.	W	4-1
Mar. 11	2017	2/6	Long Beach State	Manhattan Beach, Calif.	W	4-1
Mar. 17	2017	4/7	Arizona	Honolulu, Hawai'i	W	3-2
Mar. 17	2017	4/5	Hawai'i	Honolulu, Hawai'i	W	3-2
Mar. 25	2017	4/9	Georgia State*	Columbia, S.C.	W	3-2
Mar. 26	2017	4/10	South Carolina*	Columbia, S.C.	W	4-1
Apr. 14	2017	4/2	Pepperdine	Tallahassee, Fla.	W	3-2

Date	Season	FSU/Opp.Rank	Opponent	Site	Result	Score
Apr. 22	2017	4/10	Florida International* ^	Emerson, Ga.	W	4-1
Apr. 23	2017	4/10	Florida International* ^	Emerson, Ga.	W	3-0
May 5	2017	4/8	South Carolina* #	Gulf Shores, Ala.	W	3-0
May 5	2017	4/2	UCLA #	Gulf Shores, Ala.	W	3-1
Feb 23	2018	4/9	South Carolina*	DeLand, Fla.	W	4-1
Mar 10	2018	5/3	Hawaii	Manhattan Beach, Calif.	W	4-1
Apr. 15	2018	7/8	LSU*	Baton Rouge, La.	W	3-2
Apr. 21	2018	7/8	LSU* ^	Emerson, Ga.	W	4-1
Apr. 22	2018	7/8	LSU* ^	Emerson, Ga.	W	3-0

*Denotes conference opponent
 ^ CCSA Championship match
 # NCAA Championship match

PHOTO ROSTER



1

Macy Jerger
JR • 6-1
Fort Myers, Fla.



2

Eva Torruella
R-SO • 6-0
San Juan, Puerto Rico



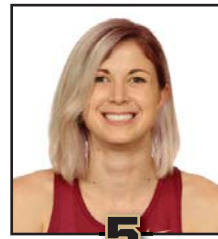
3

Sara Putt
R-SO • 5-11
Jupiter, Fla.



4

Devan Hultquist
R-SO • 5-6
Tallahassee, Fla.



5

Lauren Anderson
GR • 6-0
Peoria, Ariz. / USU



10

Ali Eager
JR • 5-11
Southlake, Texas



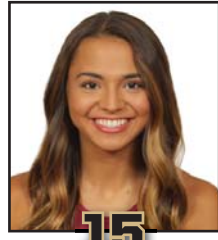
12

Vanessa Freire
SR • 5-10
Windemere, Fla.



14

Marielle Diaz
FR • 5-6
Boca Raton, Fla.



15

Alaina Chacon
FR • 5-9
Crown Point, Ind.



20

Brooke Kuhlman
JR • 5-10
Naples, Fla.



21

Molly McBain
SO • 5-9
Toronto, Ont.



24

Nikki Esposito
JR • 5-10
Deerfield Beach, Fla.



25

Tory Paranagua
SR • 5-11
Austin, Texas



31

Ashley Robert
FR • 5-5
McKinney, Texas



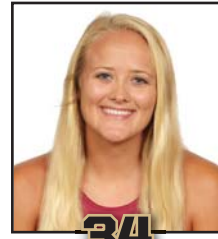
32

Francesca Goncalves
SO • 5-10
Dallas, Texas



33

Madison Fitzpatrick
FR • 5-9
Tallahassee, Fla.



34

Hailey Luke
R-SR • 6-0
Altamonte Springs, Fla.



35

Katie Horton
R-SR • 6-1
Westland, Mich.



40

Bre Edwards
R-JR • 6-3
Jacksonville, Fla.



41

Avery Poppinga
FR • 5-11
Austin, Texas



42

Bailey Reardon
FR • 6-0
Milton, Ga.



Brooke Niles
Head Coach
Third Season



Raul Papaleo
Assistant Head Coach
Second Season



Angela Rock
Volunteer Asst. Coach
First Season



Shawn Matthews
Director of Operations
First Season



Katie Burke
Assistant Director of Ops
First Season